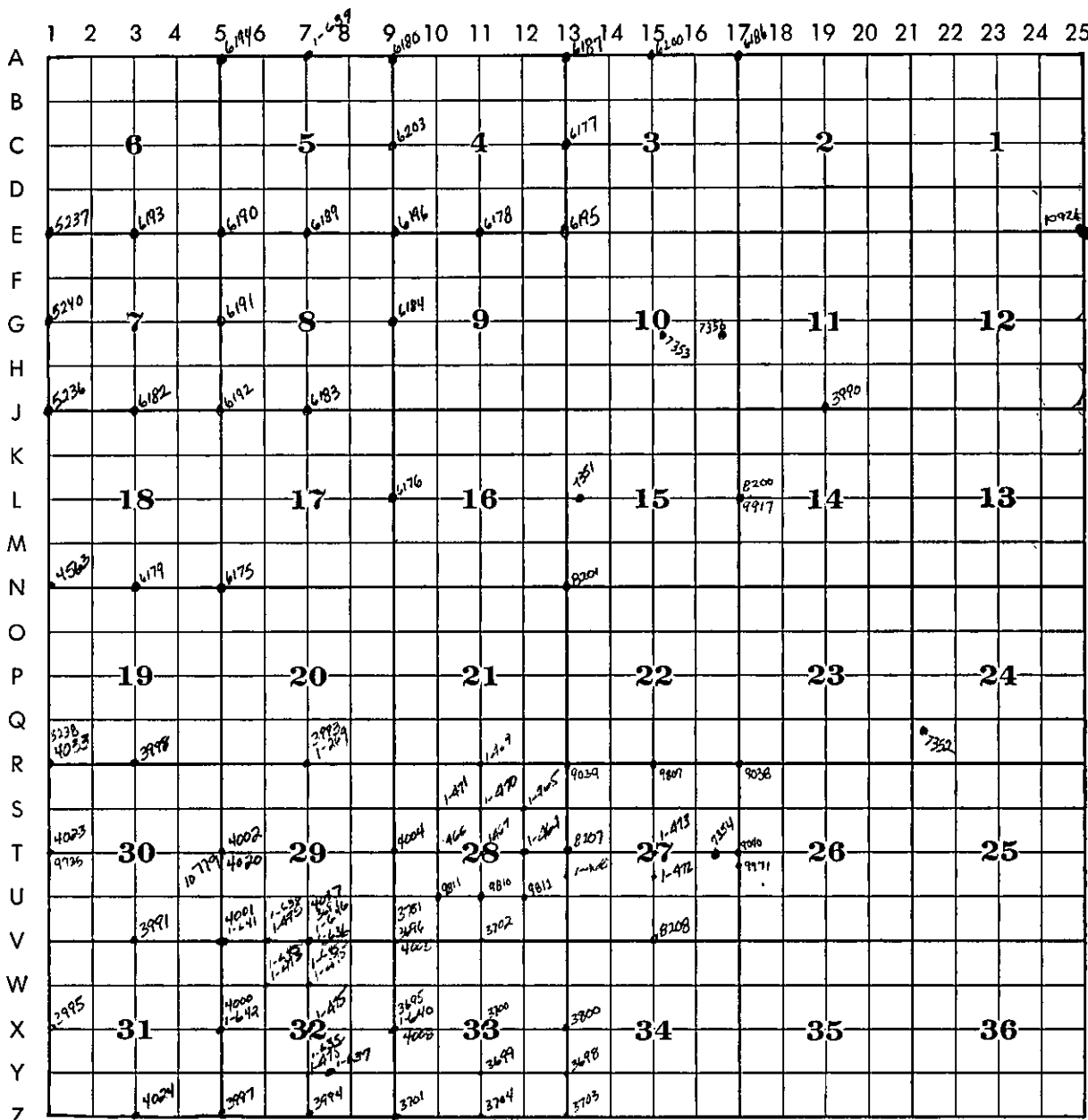


MS#10965 CPD#19-8227
 #2 - 8209 CPD#28-8228
 #2 - 8218 CPD#34-8229
 CPD#10-8233
 CPD#4-8220 CPD#11-8234
 CPD#3-8221 CPD#17-8235
 2CPD#6-8222 CPD#17-8236
 CPD#6-8223 CPD#17-8237
 CPD#6-8224 CPD#42-8247
 FAST SITE#1 - 8224
 " #2 - 8225
 " CPD#23-8226
MER.

CROSS INDEX PLAT

T. 31 R. 30



MS#10964
 #3 - 8202
 #3 - 8205
 #4 - 8206
 #3 - 8211 - E side #2
 #5 - 8212 E side #7
 #3 - 8213 " #6
 #3 - 8214 " #5
 #3 - 8215 " #4
 #3 - 8216 " #9
 #3 - 8217 " #9
 MS#10935
 #3 - 8204
 #3 - 8210
 WC Corner - 8231
 Rainy 12 - 8232
 " 13 - 8238
 " 12 - 8239
 " 11 - 8240
 " 13 - 8241
 LAST CHANCE 2 - 8242
 RAINY #5 - 8243
 LAST CHANCE - 8244
 RAINY #10 - 8245
 LAST CHANCE #6 - 8246
 Rainy #6 - 8248
 MS#10937
 #2 - 8203
 #5 - 8219

LEGEND

SEE CORPS. OF ENGINEERS
 NEXT PAGE

- Corners filed under this cross index plat.
- ⊕ Certificates filed in adjoining township as indicated by solid quadrant(s).

MC 5297 1-646
 330

Each corner certificate is identified by an alphabetical-numerical coordinate number which is derived from the system shown on the township diagram. For example, the quarter-corner between Section 5 and 6 is identified as Corner C-5.

Corners such as meander corners or subdivision corners which are not located at intersecting lines on the above diagram will be identified by reference to the nearest applicable coordinate lines, thus: AB-1; M-1-2; VW-19-20.

Corners common to adjoining townships will be identified by coordinates of the townships in which the certificates are to be filed.

Within each township record, the certificates will be filed in alphabetical-numerical sequence.

CROSS INDEX PLAT

T..... R..... MER.

	1	2	3	4	5	6	7	8	9	10	11	12	13	14	15	16	17	18	19	20	21	22	23	24	25
A																									
B																									
C			6				5				4				3			2					1		
D																									
E																									
F																									
G			7				8				9				10			11					12		
H																									
J																									
K																									
L			18				17				16				15			14					13		
M																									
N																									
O																									
P			19				20				21				22			23					24		
Q																									
R																									
S																									
T			30				29				28				27			26					25		
U																									
V																									
W																									
X			31				32				33				34			35					36		
Y																									
Z																									

LEGEND



Corners filed under this cross index plat.



Certificates filed in adjoining township as indicated by solid quadrant(s).

Each corner certificate is identified by an alphabetical-numerical coordinate number which is derived from the system shown on the township diagram. For example, the quarter-corner between Section 5 and 6 is identified as Corner C-5.

Corners such as meander corners or subdivision corners which are not located at intersecting lines on the above diagram will be identified by reference to the nearest applicable coordinate lines, thus:
AB-1; M-1-2; VW-19-20.

Corners common to adjoining townships will be identified by coordinates of the townships in which the certificates are to be filed.

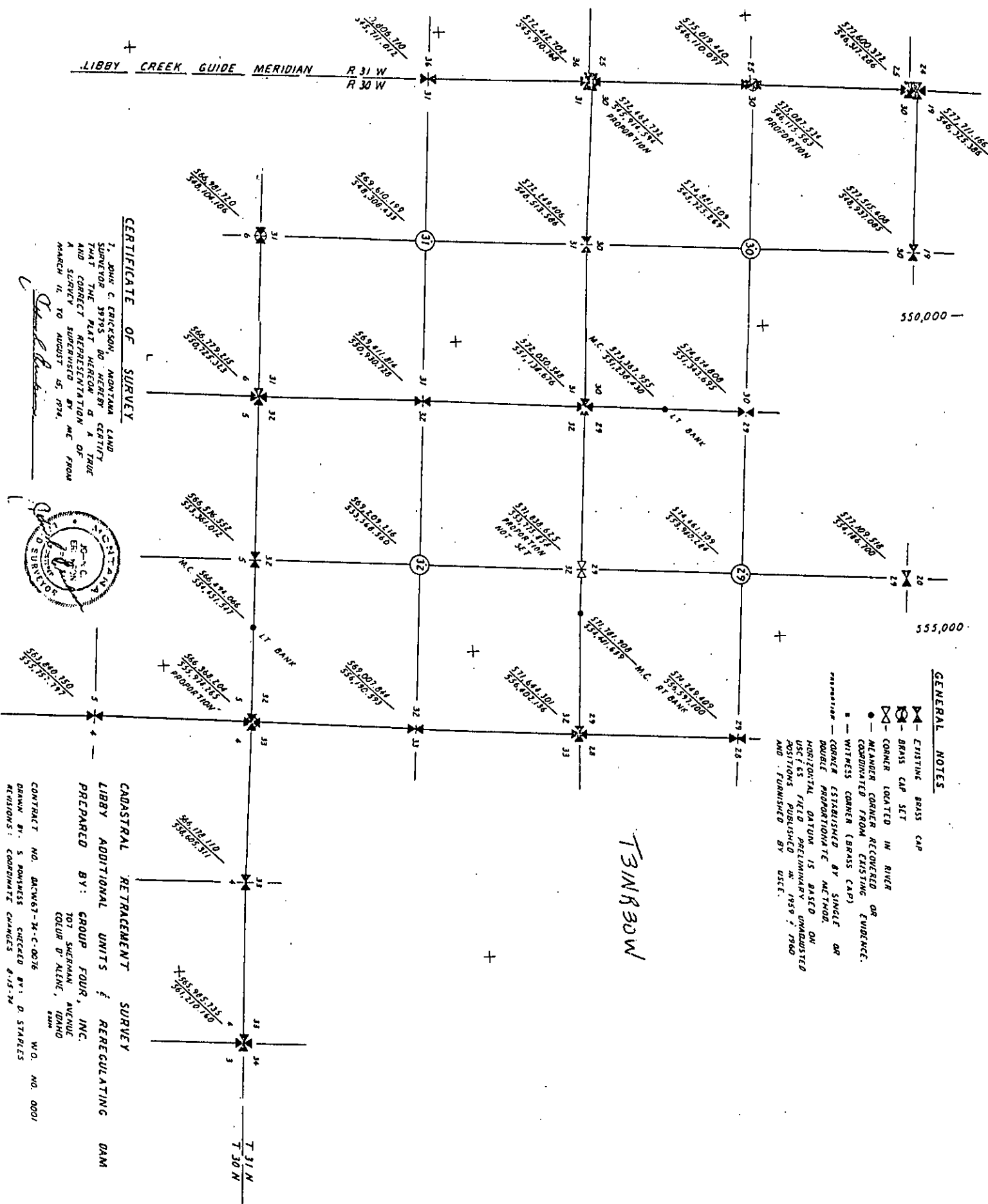
Within each township record, the certificates will be filed in alphabetical-numerical sequence.

2 of 2

GENERAL NOTES

- ▲ - EXISTING BRASS CAP
- - BRASS CAP SET
- ◀ - CORNER LOCATED IN RIVER
- - MANAGER CORNER RECOVERED OR COORDINATED FROM EXISTING EVIDENCE.
- - WITNESS CORNER (BRASS CAP)
- CORNER ESTABLISHED BY SINGLE OR DOUBLE PROPORTIONAL METHOD.
- HORIZONTAL DATUM IS BASED ON USC & S FIELD PRELIMINARY UNADJUSTED POSITIONS PUBLISHED IN 1959 & 1960 AND FURNISHED BY USGS.

T31N R30W



CERTIFICATE OF SURVEY

I, JOHN C. ERICKSON, MONTANA LAND SURVEYOR 38785 DO HEREBY CERTIFY THAT THE PLAT HEREON IS A TRUE AND CORRECT REPRESENTATION OF A SURVEY SUBMITTED BY ME FROM MARCH 11 TO AUGUST 15, 1974.

John C. Erickson



CADASTRAL RETRACEMENT SURVEY
 LIBBY ADDITIONAL UNITS & REREGULATING DAM
 PREPARED BY: GROUP FOUR, INC.
 107 SHERMAN AVENUE
 COLUR D'ALENE, IDAHO

CONTRACT NO. DAKW67-T-C-0076 W.O. NO. 0001
 DRAWN BY: S. POWERS CHECKED BY: D. STABLES
 REVISIONS: COORDINATE CHANGES 8-15-74