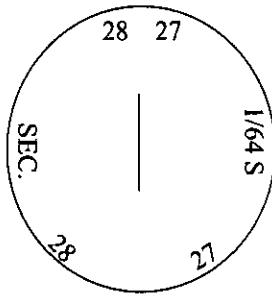


# CERTIFIED CORNER RECORDATION

Corner NS 1/64 Sec. 27&28 T. 31N R. 30W P.M., MT Lincoln County

I. 1976 Certified Corner Recordation by Melvin Lauteren, 4232S: Set by survey, a 1 in. diam. iron pipe, with brass cap mkd. as shown, per Certificate of Survey no. 215, by 4232S. Established two bearing trees.



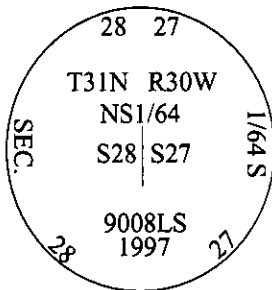
II. Found a 1 in. diam. iron pipe, with a 3 in. diam. brass cap, mkd. as shown above.

from which:

A larch, 17 ins. diam., bears N15°E, 18.0 ft. dist., mkd. "S/64 S28". (record-N13°E, 17.4 ft.)

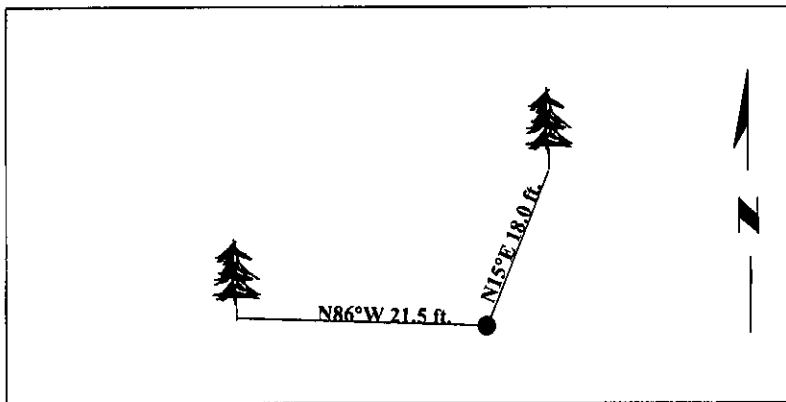
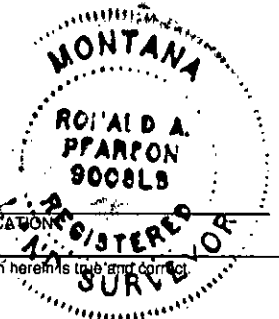
A fir, 20 ins. diam., bears N86° W, 21.5 ft. dist., with a healed face. (record-21.0 ft.)

III. The found monument is within acceptable tolerance, accept this position, and amend the cap as shown.



Changed the 8 to a 7 on the N.E. bearing tree, to reflect the correct sec. number. Painted bearing trees and attached Land Survey Monument and Bearing Tree signs.

Magnetic Declination: 20° East.



**SKETCH OF CORNER**

CERTIFICATE OF  
I, Thomas Hommel  
certify the information shown herein is true and correct.

---

I, Ronald A. Pearson  
certify that this Corner Record correctly represents work performed by me or under my direction in compliance with the "Corner Recordation Act" (70-22-101, et seq., M.C.A.)

*Ronald A. Pearson*  
Signature of Surveyor & Seal

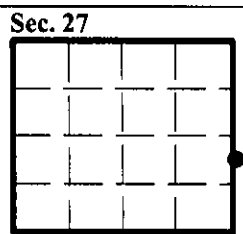
Date: 07/02/97

Reg. No.: 9008LS

Employer: U.S. FOREST SERVICE

Office of Clerk and Recorder, County of Lincoln. This "corner record" was filed for record on Oct 10, 1997 was noted on the cross-index plat and is assigned page No. 9971, in book No. \_\_\_\_\_

Carol M. Cummins By DKB  
County Official



● - corner this sheet