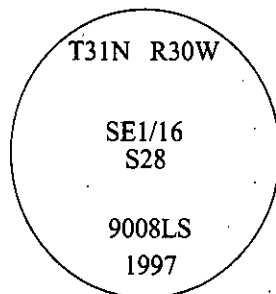


CERTIFIED CORNER RECORDATION

Corner SE 1/16 Sec. 28 T. 31N R. 30W P.M., MT Lincoln County

- I. No previous history found.
- II. No evidence found.
- III. Set by survey, a drivable aluminum rod, 30 ins. long, 3/4 in. diam., 20 ins. to bedrock, with a 3 1/4 in. diam. aluminum cap, mkd. as shown. A rock collar, surrounds the monument.



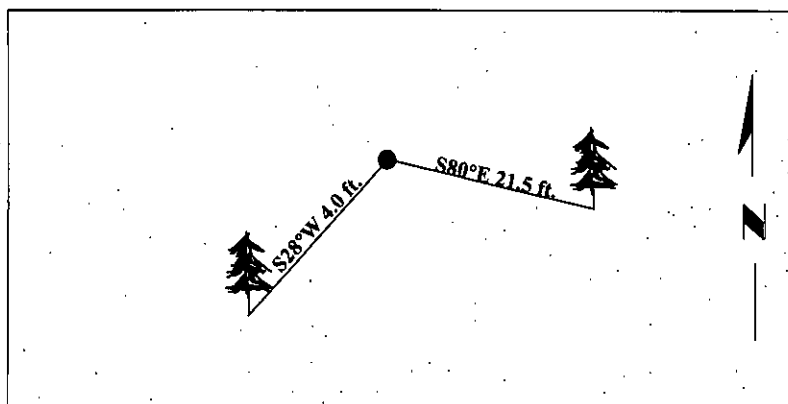
Established two bearing trees:

- A fir, 15 ins. diam., bears S80°E, 21.5 ft. dist., mkd. "SE1/16 S28 BT".
- A fir, 14 ins. diam., bears S28°W, 4.0 ft. dist., mkd. "X" "BT".

Painted bearing trees and attached Land Survey Monument and Bearing Tree signs.



Magnetic Declination: 20° East.



SKETCH OF CORNER

CERTIFICATION

I, Thomas Hommel
certify the information shown herein is true and correct.

I, Ronald A. Pearson
certify that this Corner Record correctly represents work performed by me or under my direction in compliance with the "Corner Recordation Act" (70-22-101, et seq., M.C.A.)

[Signature]
Signature of Surveyor & Seal

Date: 06/26/97

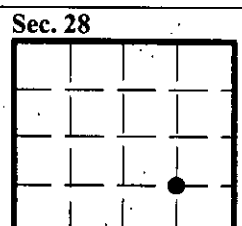
Reg. No.: 9008LS

Employer: U.S. FOREST SERVICE

Office of Clerk and Recorder, County of LINCOLN. This "corner record" was filed for record on JULY 31, 1997 was noted on the cross-index plat and is assigned page No. 9812 in book No. _____

CORAL M. CUMMINGS

County Official



● - corner this sheet