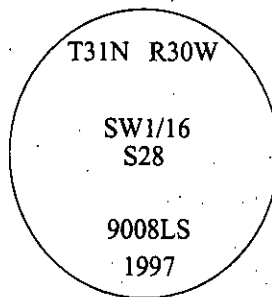


# CERTIFIED CORNER RECORDATION

Corner SW 1/16 Sec. 28 T. 31N R. 30W P.M., MT Lincoln County

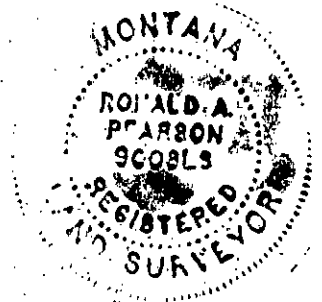
- I. No previous history found.
- II. No evidence found.
- III. Set by survey, a drivable aluminum rod, 30 ins. long, 3/4 in. diam., 26 ins. in the ground, with a 3 1/4 in. diam. aluminum cap, mkd. as shown.



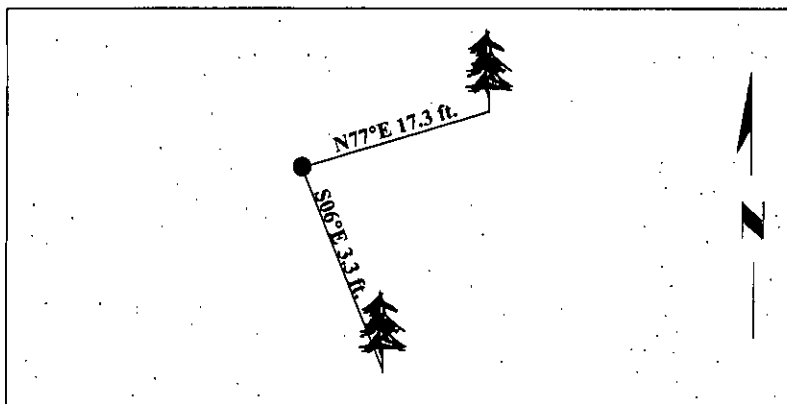
Established two bearing trees:

- A fir, 9 ins. diam., bears N77°E, 17.3 ft. dist., mkd. "SW1/16 S28 BT".
- A fir, 10 ins. diam., bears S06°E, 3.3 ft. dist., mkd. "X" "BT".

Painted bearing trees and attached Land Survey Monument and Bearing Tree signs.



Magnetic Declination: 20° East.



SKETCH OF CORNER

**CERTIFICATION**

I, Thomas Hommel  
certify the information shown herein is true and correct.

---

I, Ronald A. Pearson  
certify that this Corner Record correctly represents work performed by me or under my direction in compliance with the "Corner Recordation Act" (70-22-101, et seq., M.C.A.)

*[Signature]*  
Signature of Surveyor & Seal

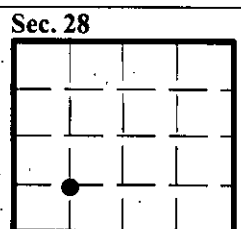
Date: 06/30/97

Reg. No.: 9008LS

Employer: U.S. FOREST SERVICE

Office of Clerk and Recorder, County of LINCOLN. This "corner record" was filed for record on JULY 31, 1997 was noted on the cross-index plat and is assigned page No. 9811 in book No. CORAL M. CUMMINGS By dlb

County Official



● - corner this sheet