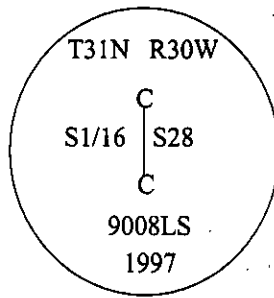


CERTIFIED CORNER RECORDATION

Corner CS 1/16 Sec. 28 T. 31N R. 30W P.M., MT Lincoln County

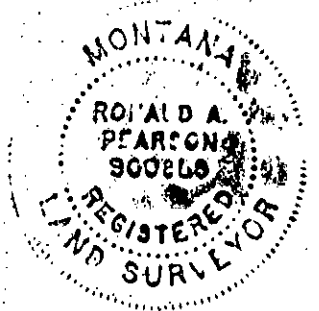
- I. No previous history found.
- II. No evidence found.
- III. Set by survey, a drivable aluminum rod, 24 ins. long, 3/4 in. diam., 20 ins. in the ground, with a 3 1/4 in. diam. aluminum cap, mkd. as shown.



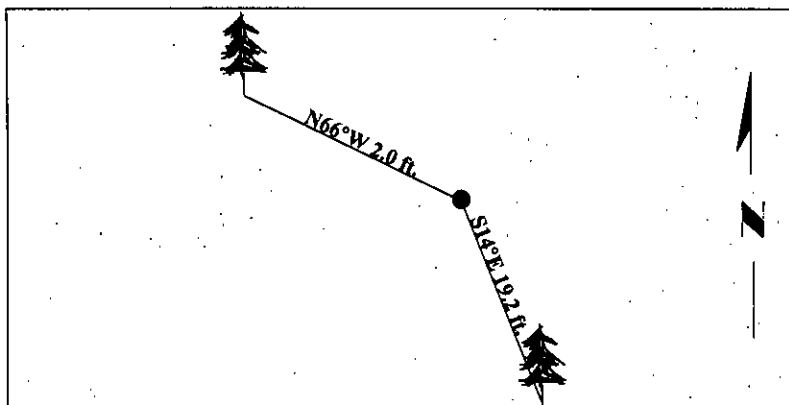
Established two bearing trees:

- A fir, 12 ins. diam., bears S14°E, 19.2 ft. dist., mkd. "CS1/16 S28 BT".
- A fir, 11 ins. diam., bears N66°W, 2.0 ft. dist., mkd. "X" "BT".

Painted bearing trees and attached Land Survey Monument and Bearing Tree signs.



Magnetic Declination: 20° East.



SKETCH OF CORNER

CERTIFICATION

I, Thomas Hommel
certify the information shown herein is true and correct.

I, Ronald A. Pearson
certify that this Corner Record correctly represents work performed by me or under my direction in compliance with the "Corner Recordation Act" (70-22-101, et seq., M.C.A.)

[Signature]
Signature of Surveyor & Seal

Date: 06/30/97

Reg. No.: 9008LS

Employer: U.S. FOREST SERVICE

Office of Clerk and Recorder, County of LINCOLN. This "corner record" was filed for record on JULY 31, 1997 was noted on the cross-index plat and is assigned page No. 9810 in book No. CORAL M. CUMMINGS By DLB
County Official

