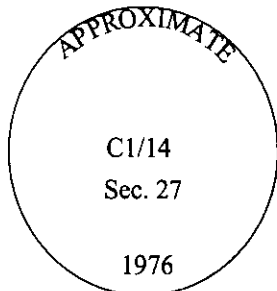


# CERTIFIED CORNER RECORDATION

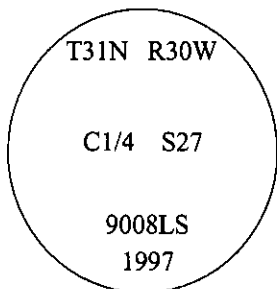
Corner C 1/4 Sec. 27 T. 31N R. 30W P.M., MT Lincoln County

I. 1976 Certified Corner Recordation by Melvin Lauteren, 4232S: Set by survey, a 1 in. diam. iron pipe, with brass cap mkd. as shown, per Certificate of Survey No. 215, by 4232S.



II. Found a 1 1/4 in. diam. iron pipe, with a 3 in. diam. brass cap, mkd. as shown above, and not accepted, corner was projected per Certificate of Survey No. 215, by 4232S.

III. Set by survey, an aluminum pipe, 30 ins. long, 2 1/2 in. diam., 21 ins. in the ground, with a 3 1/4 in. diam. aluminum cap, mkd. as shown. A collar of stone, surrounds the monument.



Established two bearing trees:

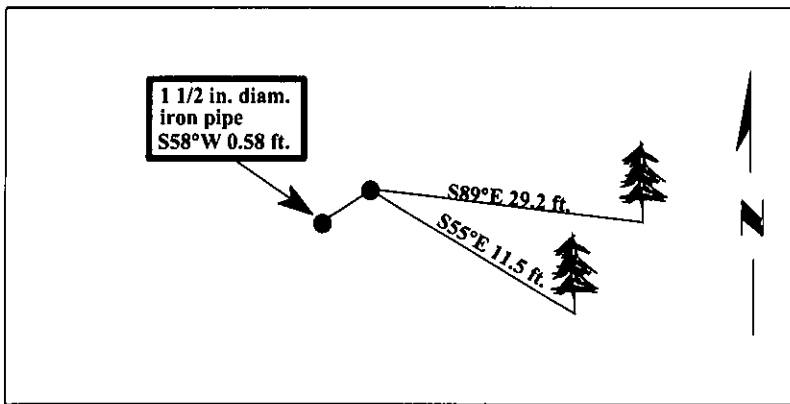
A p-pine, 23 ins. diam., bears S55°E, 11.5 ft. dist., mkd. "C1/4 S27 BT". (Possible bearing tree from others.)

A fir, 5 ins. diam., bears S89°E, 29.2 ft. dist., mkd. "

Painted bearing trees and attached Land Survey Monument and Bearing Tree signs.

The found iron pipe, bears S58°W, 0.58 ft. dist. from the newly set monument.

Magnetic Declination: 20° East.



**SKETCH OF CORNER**

CERTIFICATION

I, Jeff Hintz  
certify the information shown herein is true and correct.

---

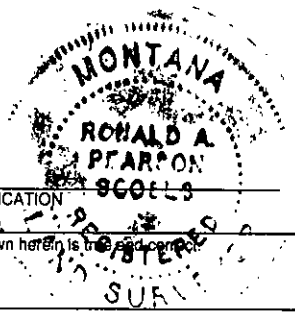
I, Ronald A. Pearson  
certify that this Corner Record correctly represents work performed by me or under my direction in compliance with the "Corner Recordation Act" (70-22-101, et seq., M.C.A.)

*Ronald A. Pearson*  
 Signature of Surveyor & Seal

Date: 06/25/97

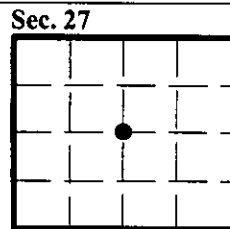
Reg. No.: 9008LS

Employer: U.S. FOREST SERVICE



Office of Clerk and Recorder, County of LINCOLN. This "corner record" was filed for record on JULY 31, 1997 was noted on the cross-index plat and is assigned page No. 9808 in book No. \_\_\_\_\_

CORAL M. CUMMINGS *By DLB*  
 County Official



● - corner this sheet

Cross Index No. T-15 T. 31N R. 30W P.M., MT