

CERTIFIED CORNER RECORDATION

Corner **W 1/4** **Sec. 30** **T. 31N** **R. 30W** **P.M., MT** **Lincoln** **County**

I. 1893 original G.L.O. record by Daniel P. Mumbrue: Set a granite stone 12x10x6 ins., 8 ins. in the ground for 1/4 sec. cor., marked 1/4 on W. face, from which:

- A pine, 36 ins. diam., bears N63 3/4°E, 49 lks. dist., mkd. "1/4 S BT".
- A pine, 10 ins. diam., bears N25°40'W, 25 lks. dist., mkd. "1/4 S BT".

1898 G.L.O. Retracement of the Libby Creek Guide Meridian by Paul S. A. Bickel: At this time the corners between T31N R30W sec. 30 and T31N R31W sec. 25 are no longer common. The original 1/4 corner now refers to sec. 25 only. The 1/4 corner for sec. 30 was not reset.

1974 Corner Recordation by John C. Erickson # 3979-S: "Found the east 1/4 corner of sec. 25 T31N R31W. Had no G.L.O. notes for the west 1/4 corner of sec. 30 and found no indication of the corner. Reset the corner by proportional measurement between the double section corners to the north and the south."

Set Corps of Engineers brass cap, from which:

- A pine, 15 ins. diam., bears N29 1/2°E, 81 lks. dist., mkd. "1/4 S30 BT".
- A power pole, 12 ins. diam., bears S15 1/2°E, 155 lks. dist., mkd. "1/4 S30 BT".

II. Found a 1 in. diam. iron pipe, 4 ins. above ground, firmly set, with a 3 1/4 in. brass Corps of Engineers cap mkd. as shown:



from which:

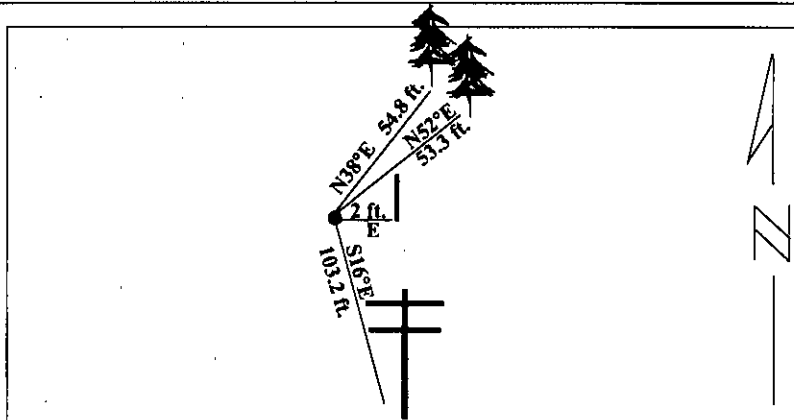
- A pine, 21 ins. diam., bears N38°E, 54.8 ft. (83 lks.) dist., with visible scribing. (Rec: N29 1/2°E, 81 lks.)
- A power pole, 14 ins. diam., bears S16°E, 103.2 ft. (156.4 lks.) dist., mkd. "1/4 S30 BT".
- A guard post, 2 ft. E. of corner with LSM & PB decals affixed.

III. Established one new bearing tree:

- A pine, 14 ins. diam., bears N52°E, 53.3 ft. dist., mkd. "W 1/4 S30 BT".

Painted red bands around the bearing trees and attached Land Survey Monument and Bearing Tree signs.

Magnetic Declination: 20° East



SKETCH OF CORNER

<p>CERTIFICATION</p> <p>I, <u>Rex O. Rice</u> certify the information shown herein is true and correct.</p> <p style="text-align: center;"><i>Rex O. Rice</i> Signature Ground Party Chief</p> <p>I, <u>Alvah F. Hughes</u> certify that this Corner Record correctly represents work performed by me or under my direction in compliance with the "Corner Recordation Act" (70-22-101, et seq., M.C.A.)</p> <p style="text-align: center;"><i>Alvah F. Hughes</i> Signature of Surveyor</p> <p>Date: <u>01/24/96</u></p> <p>Reg. No.: <u>7322LS</u></p> <p>Employer: <u>U.S. FOREST SERVICE</u></p>	
---	--

Office of Clerk and Recorder, County of LINCOLN. This "corner record" was filed for record on JULY 29, 1997 was noted on the cross-index plat and is assigned page No. 9735 in book No. _____

CORAL M. CUMMINGS
County Official *By OCB*

