

CERTIFIED CORNER RECORDATION

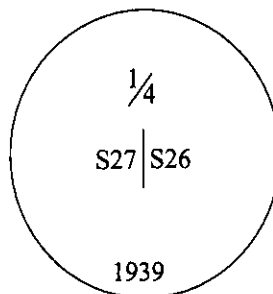
Corner E 1/4 Sec. 27 T. 31 N R. 30 W P.M., MT Lincoln County

- I. 1898 GLO original subdivision by Paul S. A. Bickel: Set a slate stone, 24x12x5 ins., 18 ins. in the ground, for 1/4 sec. cor., mkd. "1/4" on the W. face.

Established two bearing trees:

An alder, 7 ins. diam., bears N28°52'E, 41 lks. dist., mkd. "1/4 S26 BT".
An alder, 8 ins. diam., bears S77°40'W, 10 lks. dist., mkd. "1/4 S27 BT".

1939 GLO Resurvey by Ranney Y. Lyman: Found a slate stone, 20x12x5 ins., mkd. and witnessed as described in the official record, except that the original bearing trees have fallen. In the place of the stone, set an iron post, 3 ft. long, 1 in. diam., 28 ins. in the ground, with the stone, set flush with the surface, on the W. side of the post, with the brass cap mkd. as shown:



Establish two new bearing trees:

A fir, 18 ins. diam., bears N61°E, 118 lks. dist., mkd. "1/4 S26 BT".
A larch, 20 ins. diam., bears S75°W, 93 lks. dist., mkd. "1/4 S27 BT".

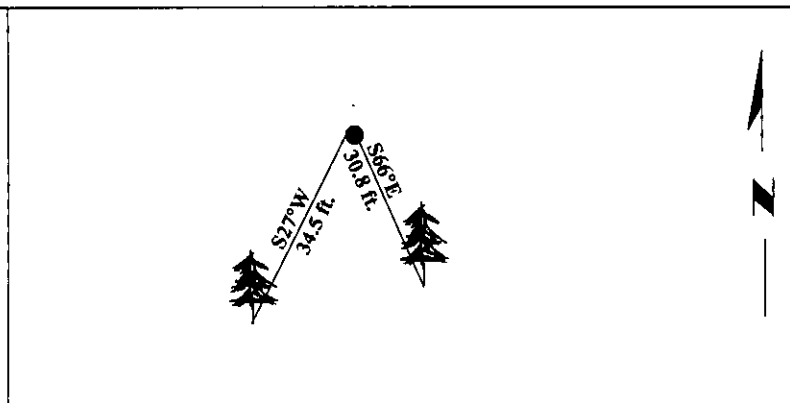
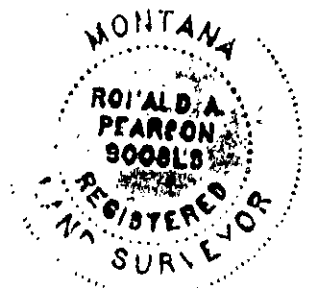
- II. Found a 2 in. diam. aluminum pipe, protruding 3 ins. above the ground, firmly set, with a 2 1/2 in. diam. brass cap mkd. as shown above. No evidence of bearing trees found.

- III. Establish two new bearing trees:

A Spruce, 15 ins. diam., bears S66°E, 30.8 ft. dist., mkd. "1/4 S26 BT".
A Spruce, 25 ins. diam., bears S27°W, 34.5 ft. dist., mkd. "1/4 S27 BT".

Painted bearing trees and attached Land Survey Monument and Bearing Tree signs.

Magnetic Declination: 20° East.

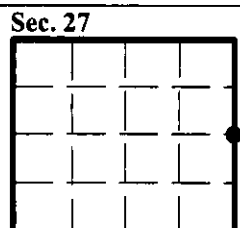


SKETCH OF CORNER

CERTIFICATION	
I. <u>Thomas M. Hommel</u>	certify the information shown herein is true and correct.
I. <u>Ronald A. Pearson</u>	certify that this Corner Record correctly represents work performed by me or under my direction in compliance with the "Corner Recordation Act" (70-22-101, et seq., M.C.A.)
Signature of Surveyor & Seal	
Date:	<u>12/30/96</u>
Reg. No.:	<u>9008LS</u>
Employer:	<u>U.S. FOREST SERVICE</u>

Office of Clerk and Recorder, County of LINCOLN. This "corner record" was filed for record on FEB 3, 1997 was noted on the cross-index plat and is assigned page No. 9040, in book No. _____

CORAL M. CUMMINGS
County Official



● - corner this sheet