

# CERTIFIED CORNER RECORDATION

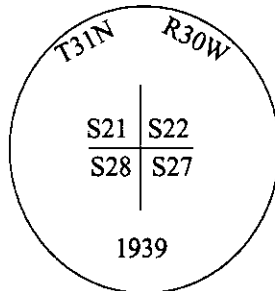
Corner Sec. Cor. Sec. 21,22, 27&28 T. 31N R. 30W P.M., MT Lincoln County

- I. 1898 G.L.O. Original Record by Paul S. A. Bickel: Set a granite stone, 16x14x6 ins., 11 ins. in the ground, for cor. of secs. 21,22,27&28, mkd. with 2 notches on S. and 3 notches on the E. edges.

Established four bearing trees:

- A pine, 18 ins. diam., bears N42°E, 40 lks. dist., mkd. "T31N R30W S22 BT".  
A pine, 20 ins. diam., bears S4°50'E, 140 lks. dist., mkd. "T31N R30W S27 BT".  
A pine, 16 ins. diam., bears S22°55'W, 153 lks. dist., mkd. "T31N R30W S28 BT".  
No suitable bearing trees, within limits in sec. 21.

1939 G.L.O. Resurvey Record by Ranney Y. Lyman: The cor. of secs. 21,22,27,&28, a granite stone, 16x14x6 ins., mkd. and witnessed as described in the official record. In the place of the stone, set an iron post, 3 ft. long, 2 ins. in diam., 28 ins. in the ground, for cor. of secs. 21,22,27&28, with the stone, set flush with the surface, on the W. side of the post, with the brass cap mkd. as shown:



Established one new bearing tree:

- A fir, 24 ins. diam., bears N2°40'W, 529 lks. dist., mkd. "T31N R30W S21 BT".

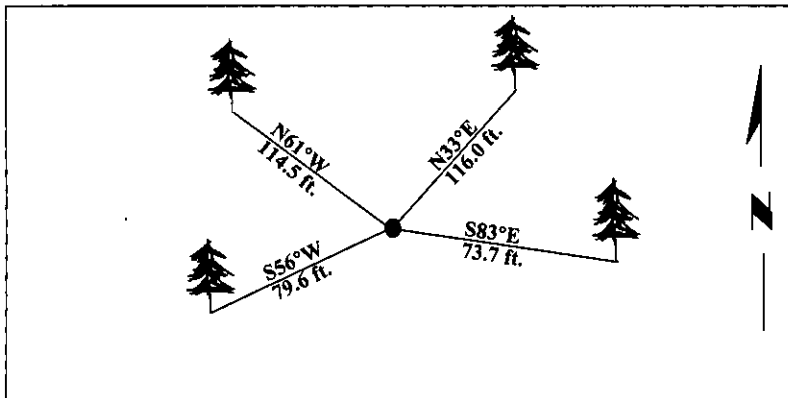
- II. Found a 2 in. diam. iron pipe, protruding 4 ins. above the ground, firmly set, with a 2 1/2 in. diam. brass cap mkd. as shown above.

from which:

- A pine, 11 ins. diam., bears N33°E, 116.0 ft. dist., mkd. with "S22" visible.  
A fir, 15 ins. diam., bears S83°E, 73.7 ft. dist., mkd. with "S27" visible.  
A pine, 9 ins. diam., bears S56°W, 79.6 ft. dist., mkd. with S28 visible.  
A pine, 7 ins. diam., bears N61°W, 114.5 ft. dist., mkd. with "S21" visible.

- II Painted bearing trees and attached Land Survey Monument and Bearing Tree signs.

Magnetic Declination: 20° East.



SKETCH OF CORNER

CERTIFICATION

I, Thomas M. Hommel  
certify the information shown herein is true and correct.

I, Ronald A. Pearson  
certify that this Corner Record correctly represents work performed by me or under my direction in compliance with the "Corner Recordation Act" (70-22-101, et seq., M.C.A.)

Signature of Surveyor & Seal

Date: 12/30/96

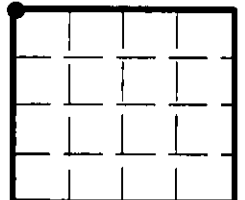
Reg. No.: 9008LS

Employer: U.S. FOREST SERVICE

Office of Clerk and Recorder, County of LINCOLN. This "corner record" was filed for record on FEB 3, 1997 and was noted on the cross-index plat and is assigned page No. 9039, in book No. CORAL M. CUMMINGS

County Official

Sec. 27



• - corner this sheet

Cross Index No. R-13 T. 31N R. 30W P.M., MT