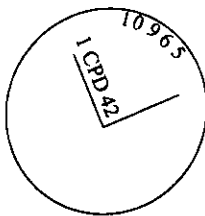


CERTIFIED CORNER RECORDATION

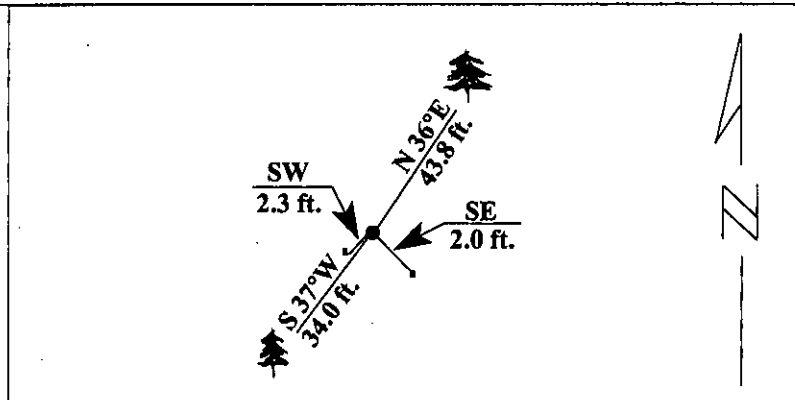
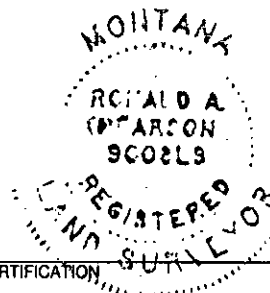
Corner MS 10965 COR. 1 Sec. 10 T. 31N R. 30W P.M., Lincoln County
CPD NO. 42 LODE MT.

- I. 1976 Original B. L. M. survey by Arthur C. Rader: At Cor. No. 1 of the CPD No. 42 lode. Set an iron post, 1 in. diam., 30 ins. long, 24 ins. in the ground, with brass cap mkd. 1-CPD42-10965; from which:
- A fir, 12 ins. diam., bears N 40°40'E, 43.8 ft. dist., mkd. 1 CPD42 10965 BT.
A fir, 8 ins. diam., bears S 37°25'W, 34.0 ft. dist., mkd. 1 CPD42 10965 BT.
A cor. of the location bears N 32°28'W, 0.3 ft. dist.
- II. Found a 1 1/2 in. diam. iron pipe, 16 ins. above ground, firmly set in a collar of stone, with a 3 1/4 in. diam. brass cap, mkd. as shown:.



from which:

- A fir, 13 ins. diam., bears N 36°E, 43.8 ft. dist., mkd. with visible scribe marks.
A fir, 9 ins. diam., bears S 37°W, 34.0 ft. dist., mkd. with visible scribe marks..
A 6 ft. steel guard post bears SE, 2.0 ft. dist., with a Property Boundary decal attached.
A 6 ft. steel guard post bears SW, 2.3 ft. dist., with a Property Boundary decal attached.
- III. Painted red bands around the bearing trees and attached Land Survey Monument and Bearing Tree signs.
- Magnetic Declination: 20° East



SKETCH OF CORNER

CERTIFICATION

I, Jeff Hintz
certify the information shown herein is true and correct.

Signature Ground Party Chief

I, Ronald A. Pearson
certify that this Corner Record correctly represents work performed by me or under my direction in compliance with the "Corner Recordation Act" (70-22-101, et seq., M.C.A.)

Ronald A. Pearson
Signature of Surveyor & Seal

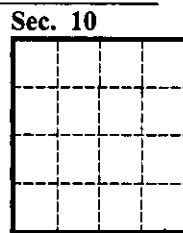
Date: 1/24/96

Reg. No.: 9008LS

Employer U.S. FOREST SERVICE

Office of Clerk and Recorder, County of Lincoln. This "corner record" was filed for record on 2-28-96 was noted on the cross-index plat and is assigned page No. 8247, in book No. _____

Coral M. Cummings RPB
County Official



● - corner this sheet