

CERTIFIED CORNER RECORDATION

Corner MS 10965 COR. 2 Sec. 23 T. 31N R. 30W P.M., MT. Lincoln County
CPD NO. 10 LODE

I. 1976 Original B. L. M. survey by Arthur C. Rader: Cor. No. 2, identical with Cor. No. 3 of the CPD No. 11 lode, of this survey. Set an iron post, 30 ins. long, 1 in. diam., 24 ins. in the ground, with brass cap mkd. 2CPD10 3CPD11-10965; from which:

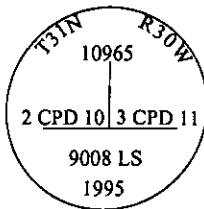
A fir, 24 ins. diam., bears S 34° W, 24.7 ft. dist. mkd. 2CPD10-10965 BT.
A pine, 20 ins. diam., bears N 0°35' W, 26.1 ft. dist., mkd. 3CPD11-10965 BT.
A cor. of the location bears S 44° E, 1.0 ft. dist.

II. The position for the monument falls in a skid road, therefore no monument was found. A temporary spike set by Cassidy & Cross was found at the location for the corner, from which:

A fir, 28 ins. diam., bears S 63°W, 24.7 ft. dist., mkd. with visible scribe marks. (Rec: S 34°W)
A pine, 23 ins. diam., bears N 20°E, 26.1 ft. dist., mkd. with visible scribe marks. (Rec: N 0° 35' W)

NOTE: The Cassidy and Cross record was not found.

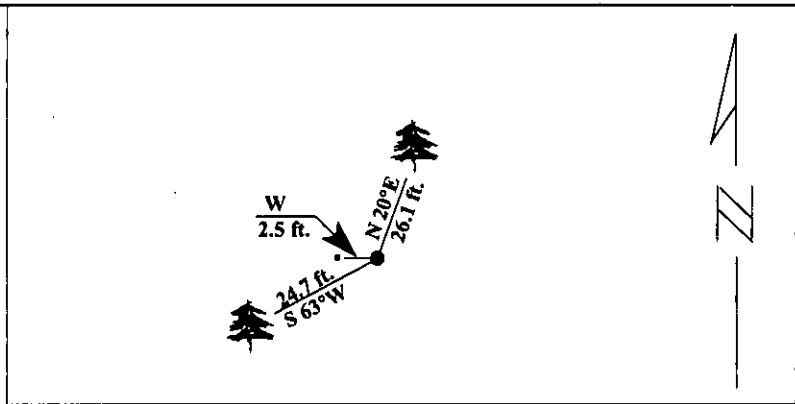
III. At the position determined by distance-distance intersection from the found bearing trees, set an aluminum pipe, 2 1/2 ins. diam., 20 ins. long, 21 ins. in the ground in a collar of stone, with a 3 1/4 in. diam. aluminum cap mkd. as shown:



Painted red bands around the bearing trees and attached Land Survey Monument and Bearing Tree signs.

Set a steel guard post with Property Boundary decal attached, WEST of the corner, 2.5 ft. dist.

Magnetic Declination: 20° East.



SKETCH OF CORNER

CERTIFICATION
I, Jeff Hintz
certify the information shown herein is true and correct.

Signature Ground Party Chief

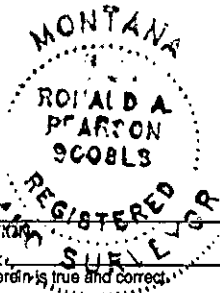
I, Ronald A. Pearson
certify that this Corner Record correctly represents work performed by me or under my direction in compliance with the "Corner Recordation Act" (70-22-101, et seq., M.C.A.)

Ronald A. Pearson
Signature of Surveyor & Seal

Date: 1/22/96

Reg. No.: 9008LS

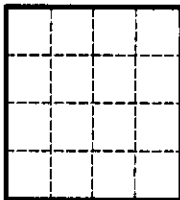
Employer U.S. FOREST SERVICE



Office of Clerk and Recorder, County of Lincoln. This "corner record" was filed for record on 2-28-96 was noted on the cross-index plat and is assigned page No. 8233, in book No. _____

Coral M. Cumming B.F.B.
County Official

Sec. 23



• - corner this sheet