

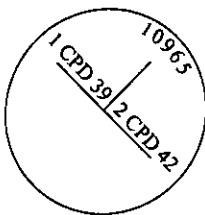
CERTIFIED CORNER RECORDATION

Corner MS 10965 COR. 1 Sec. 11 T. 31N R. 30W P.M., MT. Lincoln County
CPD NO. 39 LODE

I. 1976 Original B. L. M. survey by Arthur C. Rader: At cor. No. 1 of the CPD No. 39 lode, identical with Cor. No. 2 of the CPD No. 42 lode, of this survey. Set an iron post, 30 ins. long, 1 in. diam., 24 ins. in the ground, with brass cap mkd. 1CPD39 2CPD42-10965; from which:

A pine, 14 ins. diam., bears S 4°45' E, 20.0 ft. dist. mkd. 1CPD39-10965 BT.
A pine, 10 ins. diam., bears N 85°40' W, 8.6 ft. dist., mkd. 2CPD42-10965 BT.
A cor. of the location bears N 42°54' E, 1.0 ft. dist.

II. Found a 1 1/2 in. diam. iron pipe, 15 ins. above ground, firmly set in a collar of stone, with a 3 in. diam. brass cap, mkd. as shown:.



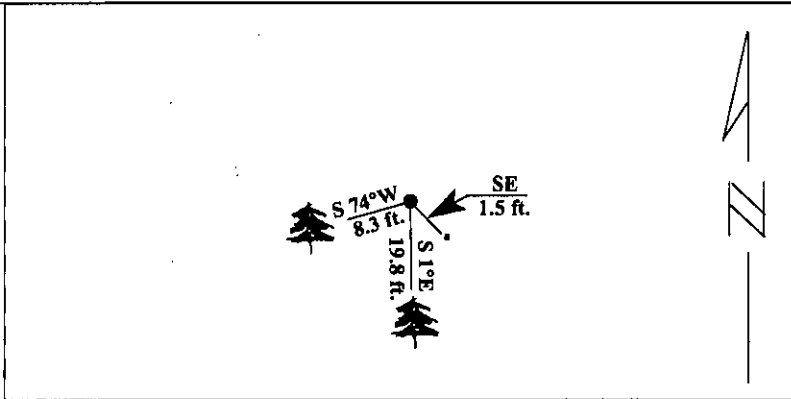
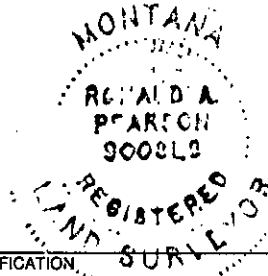
from which:

A pine, 16 ins. diam., bears S 1°E, 19.8 ft. dist., mkd. 1CPD39-10965 BT.
A pine, 10 ins. diam., bears S 74°W, 8.3 ft. dist., mkd. 2CPD42-10965 BT.. (Rec: N 85° 40'W)

III. Painted red bands around the bearing trees and attached Land Survey Monument and Bearing Tree signs.

Set a steel guard post with Property Boundary decal attached, SE of the corner, 1.5 ft. dist.

Magnetic Declination: 20° East.



SKETCH OF CORNER

I. Jeff Hintz
certify the information shown herein is true and correct.

Signature Ground Party Chief

I. Ronald A. Pearson
certify that this Corner Record correctly represents work performed by me or under my direction in compliance with the "Corner Recordation Act" (70-22-101, et seq., M.C.A.)

Signature of Surveyor & Seal

Date: 1/22/96

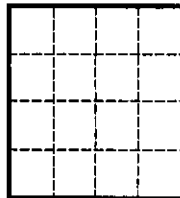
Reg. No.: 9008LS

Employer: U.S. FOREST SERVICE

Office of Clerk and Recorder, County of Lincoln. This "corner record" was filed for record on 2-28-96 was noted on the cross-index plat and is assigned page No. 8230, in book No. Coral M. Cummings B7P3

County Official

Sec. 11



• - corner this sheet

Cross Index No Cor. 1 M.S. 10965 C.P.D. No. 39 Lode T. 31N R. 30W PMM

Adopted July 1, 1981, Montana Board of Professional Engineers & Land Surveyors