

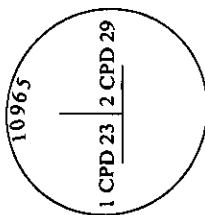
CERTIFIED CORNER RECORDATION

Corner MS 10965 COR. 1 Sec. 14 T. 31N R. 30W P.M., MT. Lincoln County  
CPD NO. 23 LODE

I. 1976 Original B. L. M. survey by Arthur C. Rader: At cor. No. 1 of the CPD No. 23 lode, identical with Cor. no. 2 of the CPD No. 29 lode of this survey. Set an iron post, 30 ins. long, 1 in. diam., 24 ins. in the ground, with brass cap mkd. 1CP23 2CPD29-10965; from which:

A pine, 8 ins. diam., bears S 19°18' E, 13.2 ft. dist. mkd. 1CPD23-10965 BT.  
A pine, 10 ins. diam., bears S 50°00' W, 23.3 ft. dist., mkd. 2CPD29-10965 BT.  
A cor. of the location bears N 42° 55'E, 1.0 ft. dist.

II. Found a 1 1/2 in. diam. iron pipe, 9 ins. above ground, firmly set, with a 3 in. diam. brass cap, mkd. as shown:.



from which:

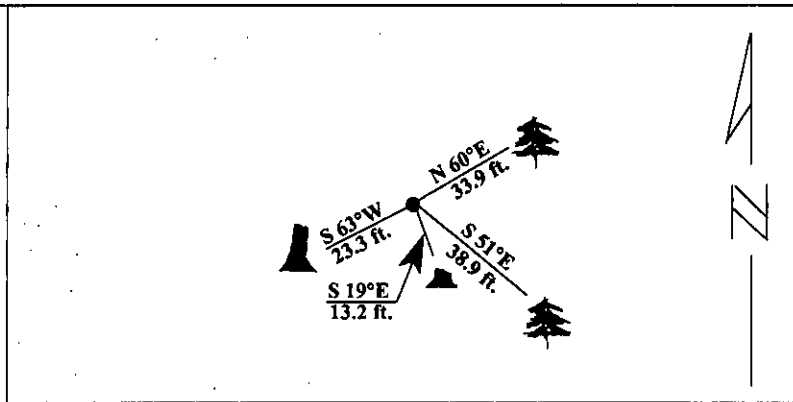
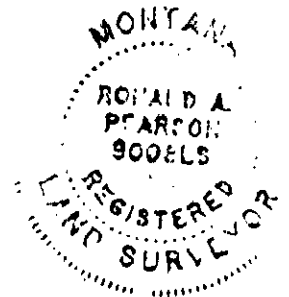
A pine high stump, 8 ins. diam., bears S 63°W, 23.3 ft. dist., mkd. with visible scribe marks. (Rec: S 50°W.)  
A pine stump, bears S 19°E, 13.2 ft. dist., no visible scribing.

III. Established two new bearing trees:

A larch, 12 ins. diam., bears N 60°E, 33.9 ft. dist., mkd. 2 CPD29 10965 BT.  
A larch, 10 ins. diam., bears S 51°E, 38.9 ft. dist., mkd. "X" BT.

Painted red bands around the bearing trees and attached Land Survey Monument and Bearing Tree signs.

Magnetic Declination: 20° East.



SKETCH OF CORNER

CERTIFICATION

I, Jeff Hintz  
certify the information shown herein is true and correct.

Signature Ground Party Chief

I, Ronald A. Pearson  
certify that this Corner Record correctly represents work performed by me or under my direction in compliance with the "Corner Recordation Act" (70-22-101 et seq. M.C.A.)

Ronald A. Pearson  
Signature of Surveyor & Seal

Date: 1/12/96

Reg. No.: 9008LS

Employer U.S. FOREST SERVICE

Office of Clerk and Recorder, County of Lincoln. This "corner record" was filed for record on 2-28-96 was noted on the cross-index plat and is assigned page No. 8226, in book No.                     

Coral M. Cumming B. B.  
County Official

Sec. 14


● - corner this sheet