

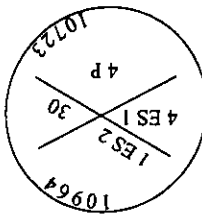
CERTIFIED CORNER RECORDATION

Corner **MS 10965 COR. 1** Sec. 26 T. 31N R. 30W P.M., Lincoln County
EASTSIDE NO. 2 LODGE MT.

I. 1976 Original B. L. M. survey by Arthur C. Rader: Cor. No. 2 of the Eastside No. 1 lode, set an iron post, 1 in. diam., 30 ins. long, 24 ins. in the ground, with brass cap mkd. 2-ES1-10964; from which:

- A fir, 8 ins. diam., bears S 0°57' W, 15.0 ft. dist. mkd. 2-ES1-10964 BT.
- A fir, 14 ins. diam., bears S 46°47' W, 17.0 ft. dist., mkd. 2-ES1-10964 BT.
- A cor. of the location bears S 56°16' E, 12.8 ft. dist.

II. Found a 1 1/2 in. iron pipe, with a 3 in. diam. brass cap, 18 ins. above the ground in a collar of stone, mkd. as shown:



from which:

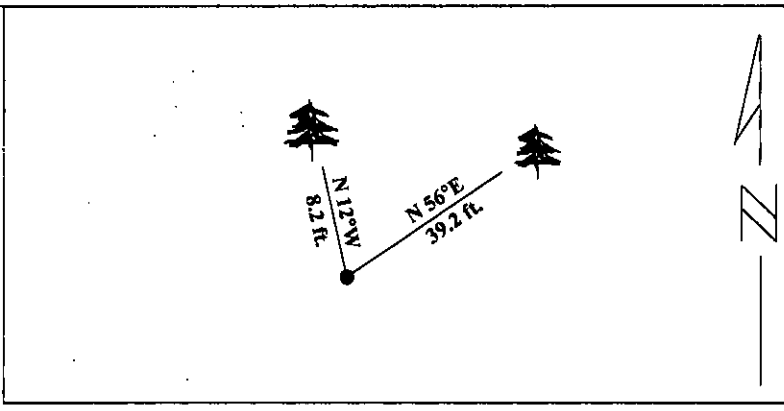
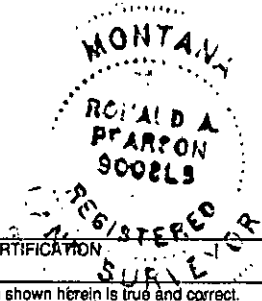
No original bearing trees were found.

III. Established two new bearing trees:

- A larch, 11 ins. diam., bears N56°E, 39.2 ft. dist., mkd. "X" BT.
- A fir, 10 ins. diam., bears N12°W, 8.2 ft. dist., mkd. 1 ES2 10964 BT.

Painted red bands around the bearing trees and attached Land Survey Monument and Bearing Tree signs.

Magnetic Declination: 20° East.



SKETCH OF CORNER

CERTIFICATION

I, Jeff Hintz
certify the information shown herein is true and correct.

Signature Ground Party Chief

I, Ronald A. Pearson
certify that this Corner Record correctly represents work performed by me or under my direction in compliance with the "Corner Recordation Act" (70-22-101, et seq., M.C.A.)

Ronald A. Pearson
Signature of Surveyor & Seal

Date: 1/12/96

Reg. No.: 9008LS

Employer: U.S. FOREST SERVICE

Office of Clerk and Recorder, County of Lincoln. This "corner record" was filed for record on 2-28-96 was noted on the cross-index plat and is assigned page No. 8225, in book No. _____

Carol M. Cummins, PB
 County Official

Sec. 26

● - corner this sheet