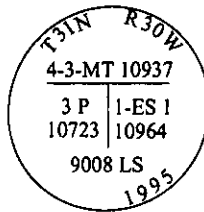


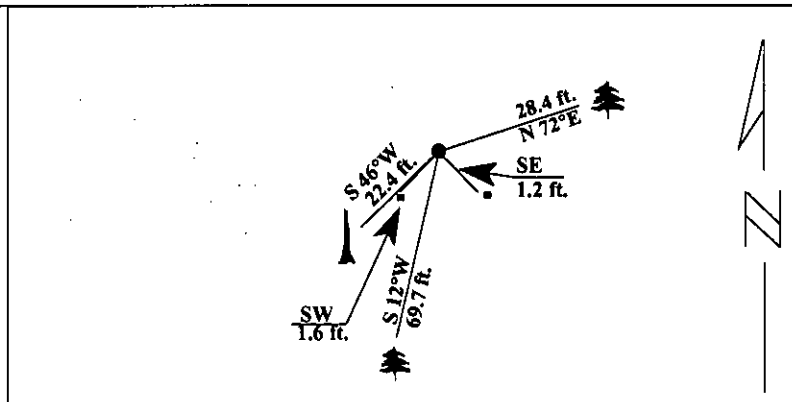
CERTIFIED CORNER RECORDATION

Corner MS 10965 COR. 1 Sec. 26 T. 31N R. 30W P.M., Lincoln County  
EASTSIDE NO. 1 LODE MT.

- I. 1976 Original B. L. M. survey by Arthur C. Rader: An iron post in place, with brass cap mkd. 3P-10723 4-3-MT-10937; which I mkd. 1-ES1-10964; from which:
- A pine, 14 ins. diam., bears N 51°55' E, 28.4 ft. dist. mkd. MT-10937 BT.  
A fir, 12 ins. diam., bears S 34°40' W, 22.8 ft. dist., mkd. 1-ES1-10964 BT.  
Identical with a cor. of the location.
- II. Found:
- A pine, 15 ins. diam., bears N 72° E, 28.4 ft. dist., mkd. with visible scribing. (Record: N51° E)  
A fir snag, 12 ins. diam., bears S 46° W, 22.4 ft. dist., mkd. with visible scribing. (Record: S34° 40' W)  
A steel guard post bears SE, 1.2 ft. dist., with a property boundary decal attached.  
A steel guard post bears SW, 1.6 ft. dist., with a property boundary decal attached.
- III. At the position determined by distance-distance intersection from the found bearing trees, set a 5/8 in. diam. driveable aluminum rod, with a 3 1/4 in. diam. aluminum cap, flush with the ground in a collar of stone, mkd. as shown:.



- III. Established one new bearing tree:
- A larch, 10 ins. diam., bears S12°W, 69.7 ft. dist., mkd. X BT.
- Painted red bands around the bearing trees and attached Land Survey Monument and Bearing Tree signs.
- Magnetic Declination: 20° East.



SKETCH OF CORNER

CERTIFICATION

I, Jeff Hintz  
certify the information shown herein is true and correct.

Signature Ground Party Chief

I, Ronald A. Pearson  
certify that this Corner Record correctly represents work performed by me or under my direction in compliance with the "Corner Recordation Act" (70-22-101 et seq., M.C.A.)

Signature of Surveyor & Seal

Date: 1/11/96

Reg. No.: 9008LS

Employer U.S. FOREST SERVICE

Office of Clerk and Recorder, County of Lincoln. This "corner record" was filed for record on 2-28-96 was noted on the cross-index plat and is assigned page No. 8224, in book No.         

Coral M. Cummings  
County Official

