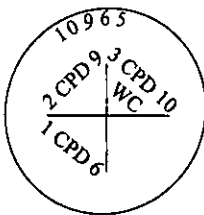


CERTIFIED CORNER RECORDATION

Corner WC MS 10965 COR. Sec. 24 T. 31N R. 30W P.M., Lincoln County
2 CPD NO. 6 LODE MT.

- I. 1976 Original B. L. M. survey by Arthur C. Rader: Witness corner to Cor. No. 1, at edge of access road: Set an iron post, 30 ins. long, 1 in. diam., 24 ins. in the ground, with brass cap mkd. WC 1CPD6 2CPD9 3CPD10-10965; from which:
- A pine, 12 ins. diam., bears N 66°40' E, 41.9 ft. dist. mkd. WC 3CPD10-10965 BT.
A larch, 10 ins. diam., bears N 87°20' W, 31.0 ft. dist., mkd. WC 2CPD9-10965 BT.
- II. Found a 1 1/2 in. diam. iron pipe, 12 ins. above ground, firmly set, with a 3 in. diam. brass cap, mkd. as shown:.



from which:

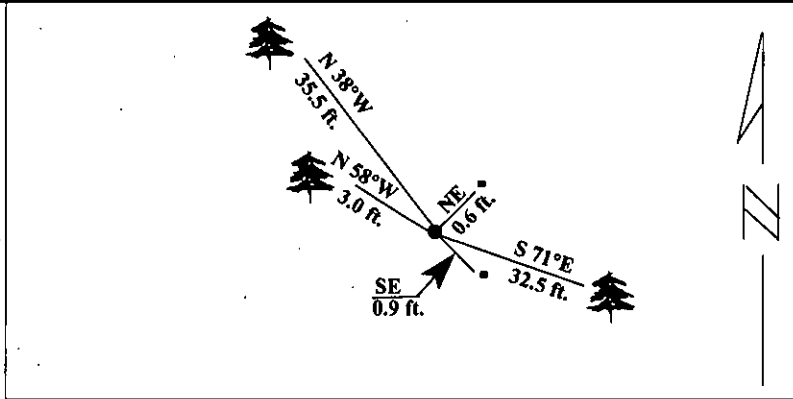
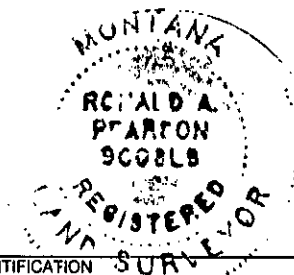
- A larch, 10 ins. diam., bears N 58°W, 3.0 ft. dist., mkd. 2 CPD 9. (No record)
A steel guard post bears SE, 0.9 ft. dist., with a property boundary decal attached.
A steel guard post bears NE, 0.6 ft. dist., with a property boundary decal attached.

- III. Established two new bearing trees:

- A larch, 7 ins. diam., bears S 58°E, 32.5 ft. dist., mkd. WC 1CPD6-10965.
A larch, 5 ins. diam., bears N 38°W, 35.3 ft. dist., mkd. "X" BT.

Painted red bands around the bearing trees and attached Land Survey Monument and Bearing Tree signs.

Magnetic Declination: 20° East.



SKETCH OF CORNER

CERTIFICATION

I, Jeff Hintz
certify the information shown herein is true and correct.

Signature Ground Party Chief

I, Ronald A. Pearson
certify that this Corner Record correctly represents work performed by me or under my direction in compliance with the "Corner Recordation Act" (70-22-101, et seq., M.C.A.)

Signature of Surveyor & Seal

Date: 1/11/96

Reg. No.: 9008LS

Employer U.S. FOREST SERVICE

Office of Clerk and Recorder, County of Lincoln. This "corner record" was filed for record on 2-28-96 was noted on the cross-index plat and is assigned page No. 8222 in book No.

Coral M. Cummings B7 PB
County Official

