

CERTIFIED CORNER RECORDATION

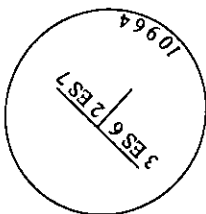
Corner MS 10964 COR. 3 Sec. 26 T. 31N R. 30W P.M., MT. Lincoln County  
EASTSIDE NO. 6

I. 1976 Original B. L. M. survey by Arthur C. Rader: Cor. No. 3, identical with Cor. No. 2 of the Eastside No. 7 lode of this survey. Set an iron post, 1 in. diam., 30 ins. long, 24 ins. in the ground, with brass cap mkd. 3-ES6 2-ES7-10964; from which:

- A pine, 10 ins. diam., bears S 59°27' E, 2.0 ft. dist. mkd. 3-ES6-10964 BT.
- A pine, 6 ins. diam., bears S 61°58' W, 10.2 ft. dist., mkd. 2-ES7-10964 BT.

Identical with a corner of the location.

II. Found a 1 1/2 in. diam. iron pipe, 13 ins. above ground, firmly set, with a 3 in. diam. brass cap, mkd. as shown:



from which:

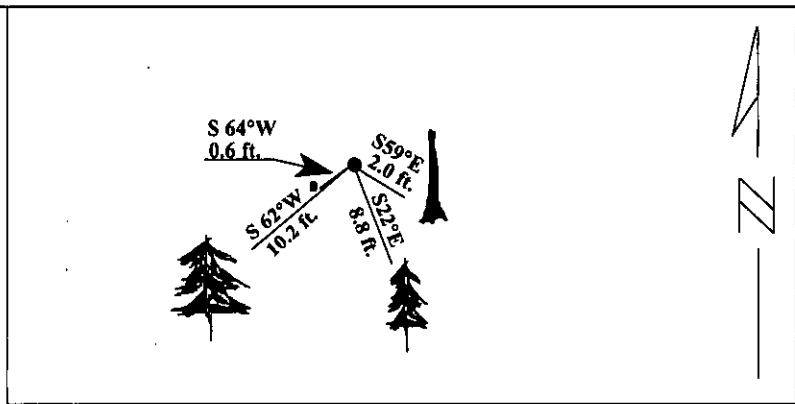
- A pine snag, 8 ins. diam., bears S 59°E, 2.0 ft. dist., mkd. with visible scribe marks.
- A pine, 7 ins. diam., bears S 62°W, 10.2 ft. dist., mkd. with visible scribe marks.
- A steel post, bears S 64°W, 0.6 ft. dist. with Property Boundary decal attached

III. Establish one new bearing tree:

- A pine, 6 ins. diam., bears S 22°E, 8.8 ft. dist., mkd. X BT.

Painted red bands around the bearing trees and attached Land Survey Monument and Bearing Tree signs.

Magnetic Declination: 20° East



SKETCH OF CORNER

CERTIFICATION

I, Jeff Hintz  
certify the information shown herein is true and correct.

Signature Ground Party Chief

I, Ronald A. Pearson  
certify that this Corner Record correctly represents work performed by me or under my direction in compliance with the "Corner Recordation Act" (70-22-101, et seq., M.C.A.)

Signature of Surveyor & Seal

Date: 12/19/95

Reg. No.: 9008LS

Employer U.S. FOREST SERVICE

Office of Clerk and Recorder, County of Lincoln. This "corner record" was filed for record on 2-28-96 was noted on the cross-index plat and is assigned page No. 8213, in book No. \_\_\_\_\_

Carol M. Cumming  
County Official

Sec. 26


• - corner this sheet