

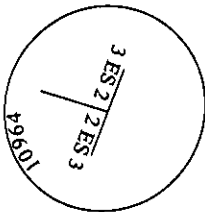
CERTIFIED CORNER RECORDATION

Corner MS 10964 COR. 3 Sec. 26 T. 31N R. 30W P.M., MT. Lincoln County EASTSIDE NO. 2

I. 1972 Original B. L. M. survey by Arthur C. Rader: Cor. No. 3, identical to Cor. No. 2 of the Eastside No. 3 Lode of this survey. Set an iron post, 1 in. diam., 30 ins. long, 24 ins. in the ground, with brass cap mkd. 3-ES2 2-ES3-10964; from which:

- A larch, 8 ins. diam., bears S 73°14' W, 6.6 ft. dist. mkd. 2-ES3-10964 BT.
- A pine, 12 ins. diam., bears N 28°00' W, 8.0 ft. dist., mkd. 3-ES2-10964 BT.

II. Found a 1 1/2 in. diam. iron pipe, 15 ins. above ground, firmly set, with a 3 in. diam. brass cap, mkd. as shown:



from which:

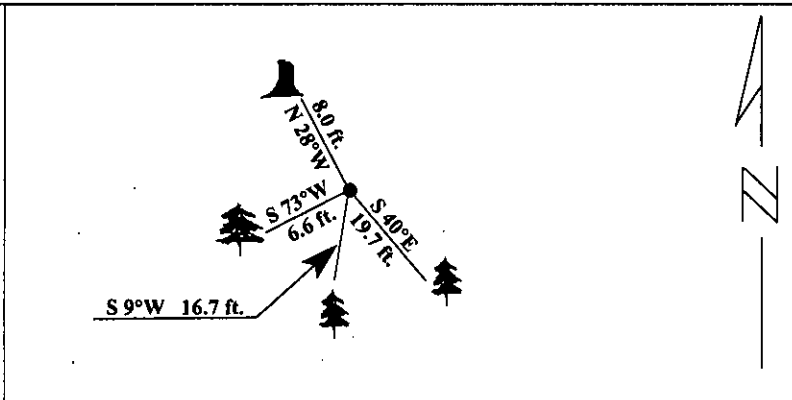
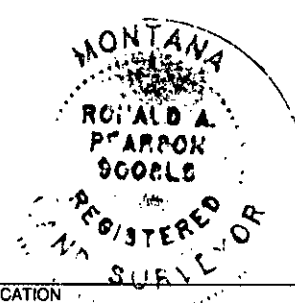
- A larch, 8 ins. diam., bears S 73°W, 6.6 ft. dist., mkd. with visible scribe marks.
- A pine stump, 12 ins. diam., bears N 28°W, 8.0 ft. dist., with no visible scribe marks.

III. Establish two new bearing trees:

- A larch, 14 ins. diam., bears S 40°E, 19.7 ft. dist., mkd. X BT.
- A fir, 11 ins. diam., bears S 9°W, 16.7 ft. dist., mkd. 2 ES 2 10964 BT.

Painted red bands around the bearing trees and attached Land Survey Monument and Bearing Tree signs.

Magnetic Declination: 20° East.



SKETCH OF CORNER

CERTIFICATION

I. Jeff Hintz
certify the information shown herein is true and correct.

Signature Ground Party Chief

I. Ronald A. Pearson
certify that this Corner Record correctly represents work performed by me or under my direction in compliance with the "Corner Recordation Act" (70-22-101 et seq., M.C.A.)

[Signature]
Signature of Surveyor & Seal

Date: 12/15/95

Reg. No.: 9008LS

Employer U.S. FOREST SERVICE

Office of Clerk and Recorder, County of Lincoln. This "corner record" was filed for record on 2-28-96 was noted on the cross-index plat and is assigned page No. 8211, in book No. _____

Carol M. Cummins B.S. P.B.
County Official

Sec. 26

● - corner this sheet