

CERTIFIED CORNER RECORDATION

Corner S 1/4 Sec. 27 T. 31 N R. 30 W P.M., MT. Lincoln County

I. 1893 Original G.L.O. survey by Paul S. A. Bickel: Set a slate stone, 14 x 8 x 6 ins., 12 ins. in the ground, for 1/4 Sec. Cor. marked 1/4 on N. face, from which:

A tamarack, 20 ins. diam., bears S 46°09'W, 65 lks. dist. mkd. 1/4 S 34 BT.

A tamarack, 6 ins. diam., bears N 35°E, 29 lks. dist., mkd. 1/4 S 27 BT.

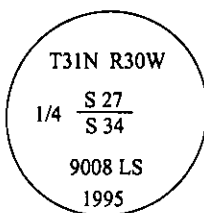
II. Found the original stone, 7 x 8 ins., firmly set, flush with the ground, with 1/4 visible on the N. face. The top portion of the stone was fractured off.

from which:

A larch snag, 7 ins. diam., bears N 62°E, 18.8 ft. (28.5 lks.) dist., with 4 S visible. (Rec: N 35°E)

A larch, 19 ins. diam., bears S 46°W, 43.7 ft. (66.2 lks.) dist., with S visible.

III. At the position of the found stone, set a 2 1/2 in. diam. aluminum pipe, 30 ins. long, 25 ins. in the ground in a collar of stone, with a 3 1/4 in. diam. aluminum cap mkd. as shown.

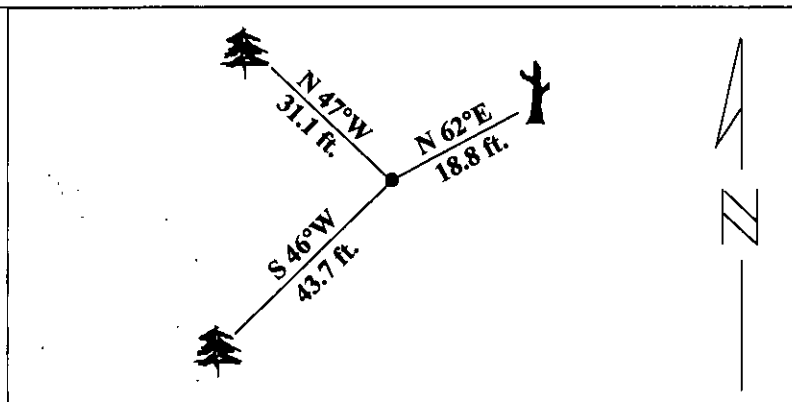


Establish one new bearing tree:

A fir, 14 ins. diam., bears N 47°W, 31.1 ft. dist., mkd 1/4 S 28 BT.

Painted red bands around the bearing trees and attached Land Survey Monument and Bearing Tree signs.

Magnetic Declination: 20° East.



SKETCH OF CORNER



CERTIFICATION

I, Thomas M. Hommel certify the information shown here is true and correct.

Thomas M. Hommel
Signature Ground Party Chief

I, Ronald A. Pearson certify that this Corner Record correctly represents work performed by me or under my direction in compliance with the "Corner Recordation Act" (70-22-101, et seq., M.C.A.)

Ronald A. Pearson
Signature of Surveyor & Seal

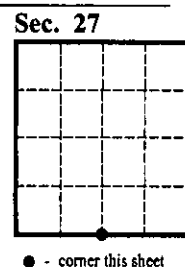
Date: 1/25/96

Reg. No.: 9008LS

Employer: U.S. FOREST SERVICE

Office of Clerk and Recorder, County of Lincoln. This "corner record" was filed for record on 2-28-96 was noted on the cross-index plat and is assigned page No. 8208, in book No. _____

Coral M. Cummings
County Official



● - corner this sheet