

CERTIFIED CORNER RECORDATION

Corner W 1/4 Sec. 27 T. 31 N R. 30 W P.M., MT. Lincoln County

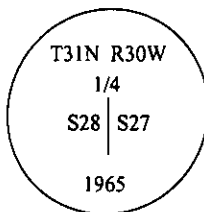
I. 1893 Original G.L.O. survey by Paul S. A. Bickel: Set a slate stone, 18 x 12 x 7 ins., 12 ins. in the ground, for 1/4 Sec. Cor. marked 1/4 on W. face, from which:

A fir, 18 ins. diam., bears S 35°56'E, 17.0 lks. dist. mkd. 1/4 S 28 BT.
A fir, 14 ins. diam., bears S 48°03'E, 22.0 lks. dist., mkd. 1/4 S 27 BT.

1965 B.L.M. remonumentation by Duane C. Lindberg: The 1/4 sec. cor. of secs. 27 and 28, monumented with a slate stone, 16 x 10 x 8 ins., firmly set, marked 1/4 on the W. side and witnessed by the remains of the original bearing trees.

At the corner point

Set an iron post, 30 ins. long, 2 1/2 ins. diam., 26 ins. in the ground, with brass cap mkd.



From which, the original bearing trees:

A stump hole, bears S 48°03'E, 22 lks. dist., with fallen log mkd. 1/4 S 27 BT.
A stump hole, bears S 35°56'E, 17 lks. dist., with fallen log mkd. 1/4 S 28 BT.

The new bearing trees:

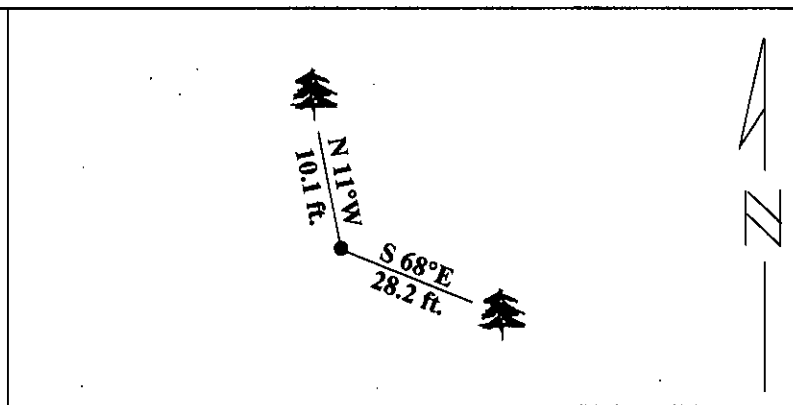
A larch, 6 ins. diam., bears S 68°E, 43 lks. dist., mkd 1/4 S 27 BT.
A larch, 15 ins. diam., bears N 11 1/2°W, 14 lks. dist., mkd 1/4 S 28 BT.

Bury the original stone alongside the iron post.

II. Found a 2 1/2 in. diam. iron pipe, 4 ins. above ground, firmly set, with a 3 1/4 in. diam. brass cap, mkd. as shown above, from which:

A larch, 18 ins. diam., bears N 11°W, 10.1 ft. (15.3 lks.) dist., mkd. with visible scribe marks.
A larch, 9 ins. diam., bears S 68°E, 28.2 ft. (42.7 lks.) dist., mkd. with a healed face.
No original G.L.O. bearing trees found.

III. Painted red bands around the bearing trees and attached Land Survey Monument and Bearing Tree signs.
Magnetic Declination: 20° East.

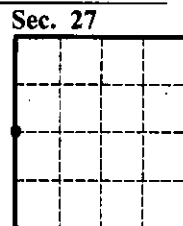


SKETCH OF CORNER

CERTIFICATION
I, Thomas M. Hommel certify the information shown herein is true and correct.
Signature Ground Party Chief
I, Ronald A. Pearson certify that this Corner Record correctly represents work performed by me or under my direction in compliance with the "Corner Recordation Act" (70-22-101, et seq., M.C.A.)
Signature of Surveyor & Seal
Date: 1/25/96
Reg. No.: 9008LS
Employer: U.S. FOREST SERVICE

Office of Clerk and Recorder, County of Lincoln. This "corner record" was filed for record on 2-28-96 was noted on the cross-index plat and is assigned page No. 8207, in book No. _____

Coral M. Cummings
County Official



• - corner this sheet