

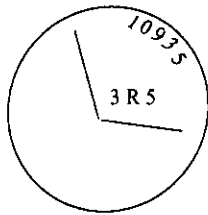
CERTIFIED CORNER RECORDATION

**Corner MS 10935 COR. 3 Sec. 15 T. 31N R. 30W P.M., MT. Lincoln County
RAINY NO. 5**

I. 1972 Original B. L. M. survey by Arthur C. Rader: Cor. No. 3. Set an iron post, 1 1/2 ins. diam., 30 ins. long, 24 ins. in the ground, with brass cap mkd. 3-R5-10935; from which:

- A pine, 8 ins. diam., bears N 33° W, 31.0 ft. dist. mkd. 3-R5-10935.
- A pine, 8 ins. diam., bears N 5° W, 15.0 ft. dist., mkd. 3-R5-10935.

II. Found a 1 1/2 in. diam. iron pipe, 6 ins. above ground, firmly set, with a 3 in. diam. brass cap, mkd. as shown:



from which:

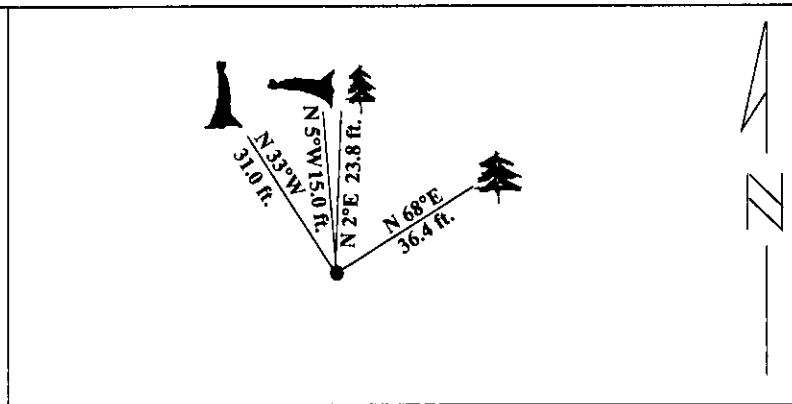
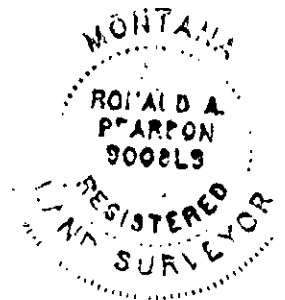
- A pine snag, 9 ins. diam., bears N 33°W, 31.0 ft. dist. mkd. with visible scribe marks.
- A dead and down pine, 9 ins. diam., bears N 5°W, 15.0 ft. dist., mkd. with visible scribe marks.

III. Establish two new bearing trees:

- A pine, 7 ins. diam., bears N 2°E, 23.8 ft. dist., mkd. 3 R5 10935 BT.
- A fir, 6 ins. diam., bears N 68°E, 36.4 ft. dist., mkd. X BT.

Painted red bands around the bearing trees and attached Land Survey Monument and Bearing Tree signs.

Magnetic Declination: 20° East.



SKETCH OF CORNER

CERTIFICATION

I, Kima Burrell
certify the information shown herein is true and correct.

Signature Ground Party Chief

I, Ronald A. Pearson
certify that this Corner Record correctly represents work performed by me or under my direction in compliance with the "Corner Recordation Act" (70-22-101, et seq. M.C.A.)

Signature of Surveyor & Seal

Date: 12/15/95

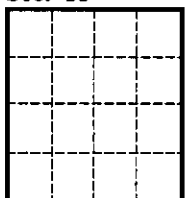
Reg. No.: 9008LS

Employer U.S. FOREST SERVICE

Office of Clerk and Recorder, County of Lincoln. This "corner record" was filed for record on 2-28-96 was noted on the cross-index plat and is assigned page No. 8204, in book No. _____

Coral M. Cummins By RB
County Official

Sec. 15



• - corner this sheet