

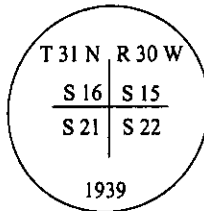
CERTIFIED CORNER RECORDATION

Corner SW SEC. COR. Sec. 15 T. 31 N R. 30 W P.M., MT. Lincoln County

I. 1939 Original G.L.O. survey by Ranny Y. Lyman: The cor. of secs. 15, 16, 21 and 22, identical with Cor. No. 1 of M. S. 10637, Vermiculite Number 4 Placer; a slate stone, 10 x 16 x 6 ins. above ground; marked and witnessed as described in the official record, except that the northwest bearing tree is fallen.

On the E. side of the stone:

Set an iron post, 3 ft. long, 1 in. diam., 28 ins. in the ground., with brass cap marked:



from which:

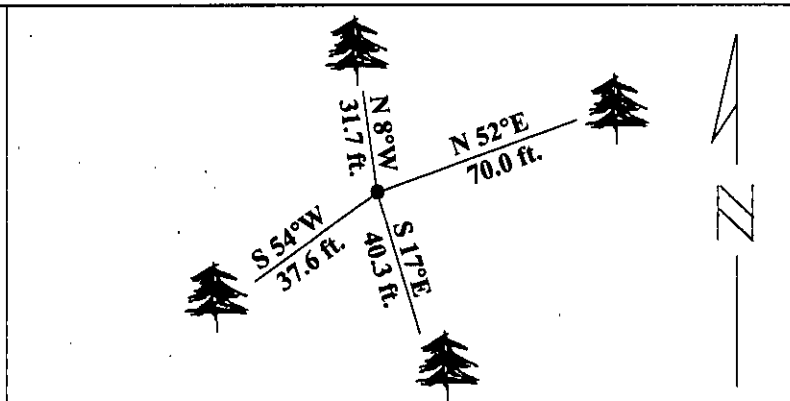
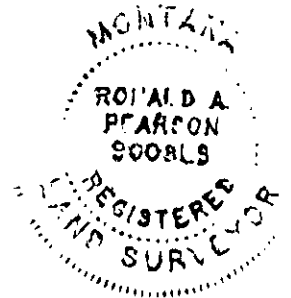
- A pine, 10 ins. diam., bears N 52°15'E, 107 lks. dist. mkd. T 31 N R 30 W S 15 BT.
- A pine, 10 ins. diam., bears S 16°45'E, 61 lks. dist. mkd. T 31 N R 30 W S 22 BT.
- A pine, 8 ins. diam., bears N 1°30'W, 48 lks. dist. mkd. T 31 N R 30 W S 16 BT.

II. Found an iron pipe., 2 ins. diam., 14 ins. above ground, firmly set, with a 2 1/2 in. daim. brass cap mkd. as shown above, from which: .

- A fir, 24 ins. diam., bears N 52°E, 70.0 ft. (106 lks.) dist. mkd. with a pitched face. (Rec: Pine)
- A larch, 14 ins. diam., bears S 17°E, 40.3 ft. (61 lks.) dist. mkd. with a healed face. (Rec: Pine)
- A pine, 20 ins. diam., bears N 8°W, 31.7 ft. (48 lks.) dist. mkd. with a healed face. (Rec: N 1°30'W)
- A fir, 18 ins. diam., bears S 54°W, 37.6 ft. dist. mkd. with a healed face. (No record)

III. Painted red bands around the bearing trees and attached Land Survey Monument and Bearing Tree signs.

Magnetic Declination: 20° East.



SKETCH OF CORNER

CERTIFICATION

I, Thomas M. Hommel
certify the information shown herein is true and correct.

[Signature]
 Signature Ground Party Chief

I, Ronald A. Pearson
certify that this Corner Record correctly represents work performed by me or under my direction in compliance with the "Corner Recordation Act" (70-22-101, et seq., M.C.A.)

[Signature]
 Signature of Surveyor & Seal

Date: 1/25/96

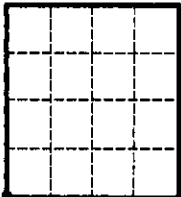
Reg. No.: 9008LS

Employer U.S. FOREST SERVICE

Office of Clerk and Recorder, County of Lincoln. This "corner record" was filed for record on 2-28-96 was noted on the cross-index plat and is assigned page No 8201, in book No. _____

[Signature]
 County Official

Sec. 15



• - corner this sheet

Cross Index No N-13 T. 31N R. 30W PMM