

## INSTRUCTIONS

1. Original and/or subsequent record used to evaluate the corner position.
2. Description of evidence found, not discrepancies in the record, state method of establishing lost or obliterated corners.
3. Description of monument and accessories set to perpetuate the corner position.
4. Sketch of corner, show all pertinent data which can best be shown in a sketch example, corner marking, topography ties, position of accessories, etc.
5. Certification must be signed and sealed by Land Surveyor registered in the State of Montana.
6. Fill in Cross Index & Section Diagram at bottom of sheet.

## CERTIFIED CORNER RECORDATION

Corner AP4 T. 31N R. 30W P.M.M. Lincoln County

## RECORD:

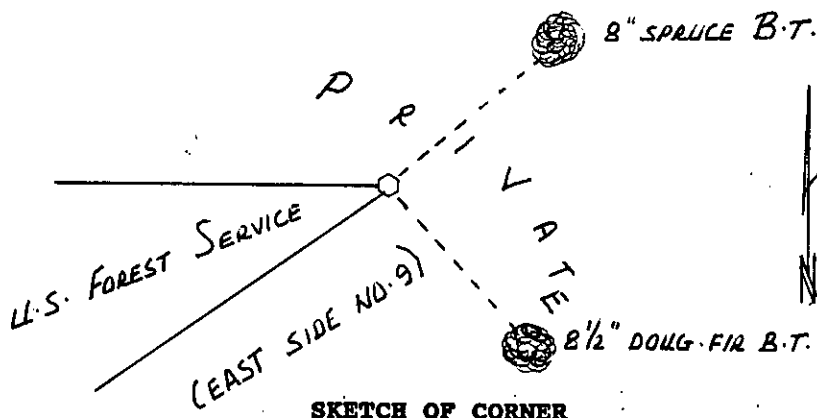
None.

## FOUND:

None.

## PERPETUATION:

Set a standard Forest Service 3 1/4" aluminum cap on a 3/4"x30" aluminum shaft 25" in the ground, 5" out of ground surrounded by a mound of stone. An 8 1/2" douglas fir Bearing Tree bears S36°E, 26.2 feet distant scribed AP4 BT. An 8" spruce Bearing Tree bears N36°E, 27.3 feet distant scribed AP4 BT. Distances were measured to a nail at side center of the tree. Trees were signed with blazes and scribing painted red. A 6' steel post with a Land Survey Monument decal attached is southwest 1.5 feet. (refer to diagram on back of this sheet for information on how corner was established.)



SKETCH OF CORNER

## CERTIFICATION

I, John Marquette

certify the information shown herein is true and correct.

John Marquette  
Signature Ground Party Chief

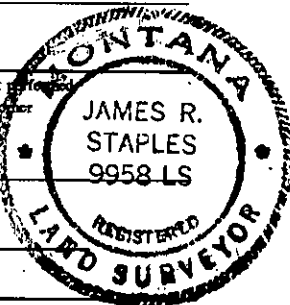
I, James R. Staples

certify that this corner Record correctly represents work performed by me or under my direction in compliance with the "Corner Recordation Act" (70-22-101, et seq., M.C.A.)

James R. Staples  
Signature of Surveyor & Seal

Date: 5/2/95 Reg. No. 9958

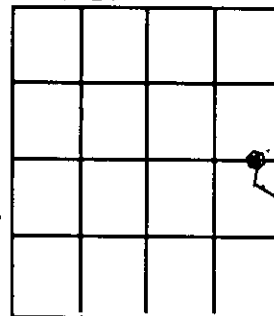
Employer: J.R.S. Surveying, Inc.



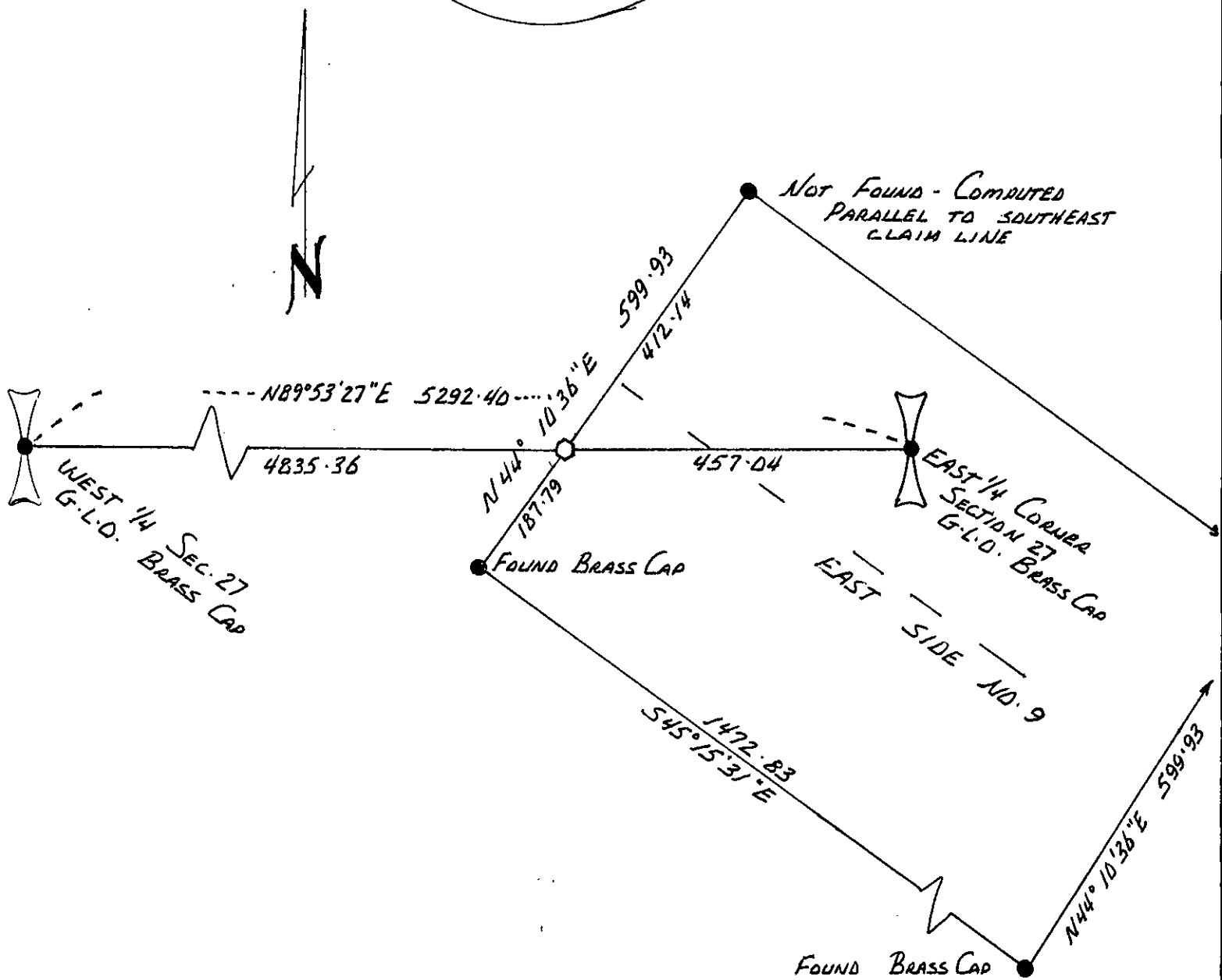
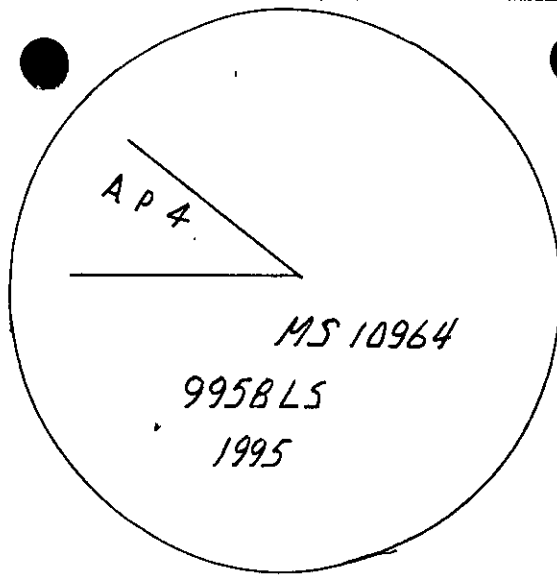
Office of Clerk and Recorder, County of Lincoln. This "corner record" was filed for record on May 16, 1995 was noted on the cross-index plat and is assigned page No. 7354 in book No. \_\_\_\_\_

Coral M. Cummins B.03  
County Official

Sec. 27



Cross Index No. \_\_\_\_\_ T. 31N R. 30W P.M.M.



A.P. 4 WAS SET AT THE INTERSECTION OF THE EAST-WEST CENTERLINE OF SECTION 27 AND THE NORTHWESTERLY LINE OF PATENTED CLAIM EAST SIDE NO. 9 (MS 10964).