

INSTRUCTIONS

1. Original and/or subsequent record used to evaluate the corner position.
2. Description of evidence found, not discrepancies in the record, state method of establishing lost or obliterated corners.
3. Description of monument and accessories set to perpetuate the corner position.
4. Sketch of corner, show all pertinent data which can best be shown in a sketch example, corner marking, topography ties, position of accessories, etc.
5. Certification must be signed and sealed by Land Surveyor registered in the State of Montana.
6. Fill in Cross Index & Section Diagram at bottom of sheet.

**CERTIFIED CORNER RECORDATION**

Corner 3CPD3 / 2CPD2 T. 31N R. 30W P.M.M. Lincoln County

RECORD:

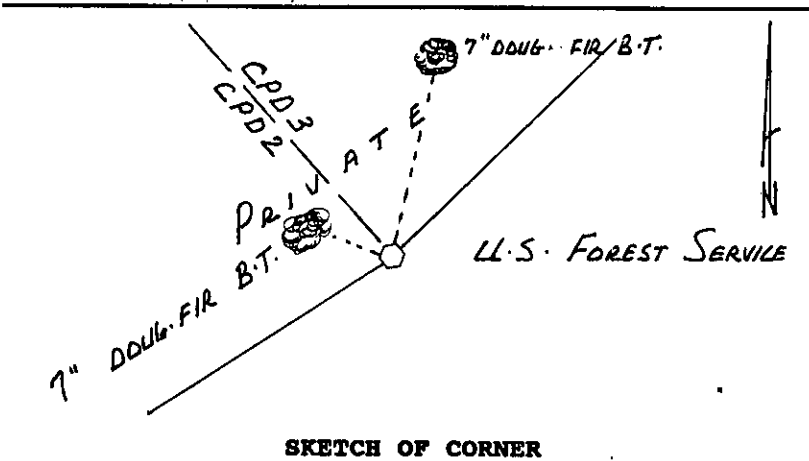
Set an iron post, 1" diameter, 30" long, 24" in the ground, with brass cap marked 2CPD2 3CPD3-10965; from which,  
 A pine 12" diameter bears N86°50'W, 9.4 feet distant marked 2CPD2-10965 BT.  
 A pine 12" diameter bears N43°50'W, 14.5 feet distant marked 3CPD3-10965 BT.  
 A location corner bears N86°06'E, 83.2 feet distant.

FOUND:

No evidence of Bearing Trees or monument. Corner post of record was laying loose on stump, the origin of which was undiscernible.

PERPETUATION:

Set a standard Forest Service 3 1/4" aluminum cap on a 3/4"x30" aluminum shaft 25" in the ground, 5" out of ground surrounded by a mound of stone. A 7" douglas fir Bearing Tree bears N54°W, 5.8 feet distant scribed 2CPD2-10965 BT. A 7" douglas fir Bearing Tree bears N20°E, 17.5 feet distant scribed 3CPD3-10965 BT. Distances were measured to a nail at the side center of the tree. Trees were signed and painted red. A 6' steel post with a Land Survey Monument decal attached was placed 1 foot Northeast of the corner. (Refer to diagram on back of this sheet which shows how corner position was established.)



CERTIFICATION

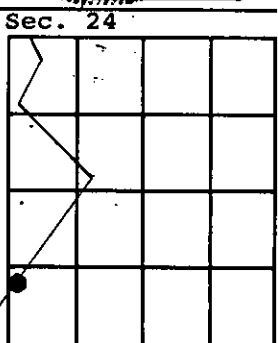
I, John Marquette  
 certify the information shown herein is true and correct.  
*John Marquette*  
 Signature Ground Party Chief

I, James R. Staples  
 certify that this corner Record correctly represents work performed by me or under my direction in compliance with the "Corner Recordation Act" (70-22-101, et seq., M.C.A.)  
*James R. Staples*  
 Signature of Surveyor & Seal

Date: 5/2/95 Reg. No. 9958

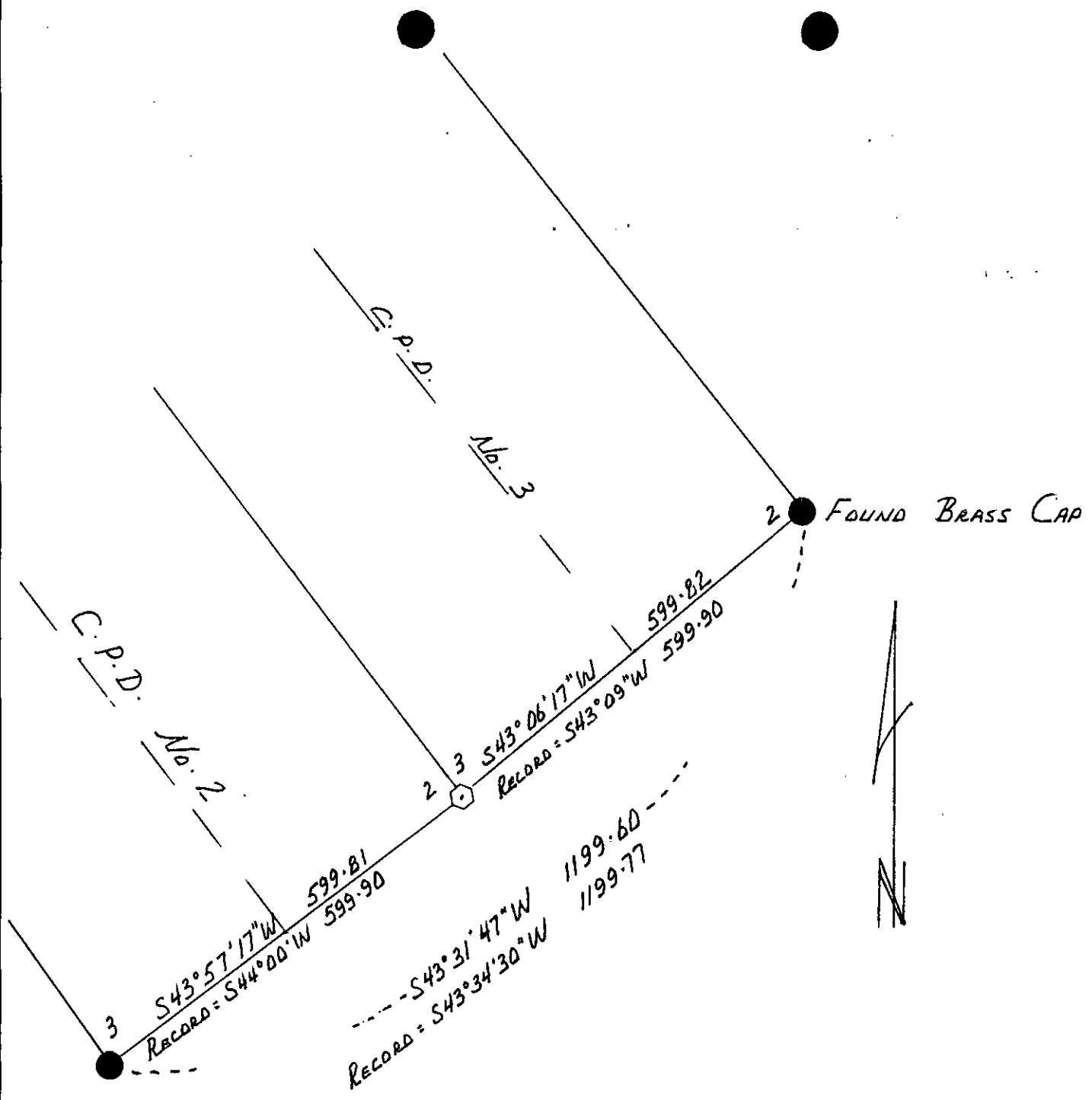
Employer: J.R.S. Surveying, Inc.

Office of Clerk and Recorder, County of Lincoln. This "corner record" was filed for record on May 16, 1995 was noted on the cross-index plat and is assigned page No. 1352 in book No. \_\_\_\_\_  
Coral M. Cummins By DB  
 County Official



Cross Index No. \_\_\_\_\_ T. 28N R. 30W PMM

- corner this sheet



THE CORNER POSITION OF 2CPD2/3CPD3 WAS DETERMINED BY GRANT BOUNDARY METHOD.

