

INSTRUCTIONS

1. Original and/or subsequent record used to evaluate the corner position.
2. Description of evidence found, not discrepancies in the record, state method of establishing lost or obliterated corners.
3. Description of monument and accessories set to perpetuate the corner position.
4. Sketch of corner, show all pertinent data which can best be shown in a sketch example, corner marking, topography ties, position of accessories, etc.
5. Certification must be signed and sealed by Land Surveyor registered in the State of Montana.
6. Fill in Cross Index & Section Diagram at bottom of sheet.

CERTIFIED CORNER RECORDATION

Corner AP2 (MS10935) (MS10965) T. 31N R. 30W P.M.M. Lincoln County

RECORD:

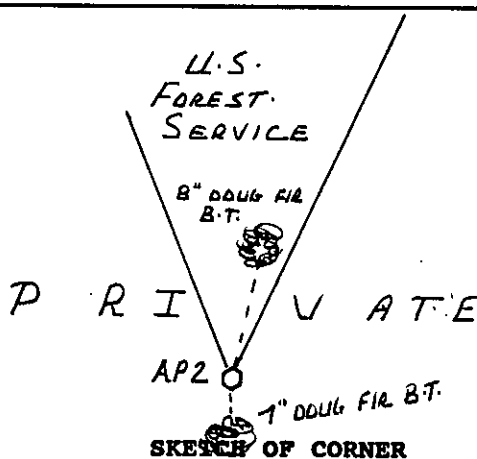
None.

FOUND:

None.

PERPETUATION:

Set a standard Forest Service 3 1/4" aluminum cap on a 3/4"x30" aluminum shaft 28" in the ground, 2" out of the ground surrounded by a small mound of stone. An 8" douglas fir Bearing Tree bears N20°E, 42.9 feet distant scribed AP2 BT. A 7" douglas fir Bearing Tree bears S1°E, 6.6 feet distant scribed AP2 BT. Distances were measured to a nail at the side center of the tree. Trees were signed with blazes and scribing painted red. A 6' steel post with a Land Survey Monument decal attached was placed 2.7 feet Northeast. (Refer to diagram on back of this sheet for information on how corner was established.)



CERTIFICATION

I, John Marquette

certify the information shown herein is true and correct.

John Marquette
Signature Ground Party Chief

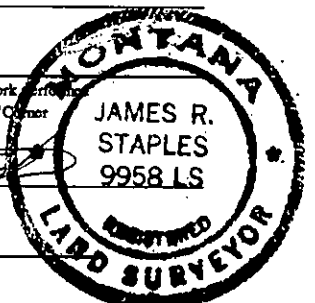
I, James R. Staples

certify that this corner Record correctly represents work performed by me or under my direction in compliance with the "Corner Recordation Act" (70-22-101, et seq., M.C.A.).

James R. Staples
Signature of Surveyor & Seal

Date: 5/2/95 Reg. No. 9958

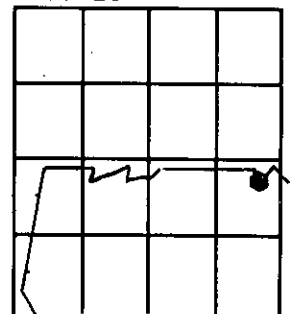
Employer: J.R.S. Surveying, Inc.



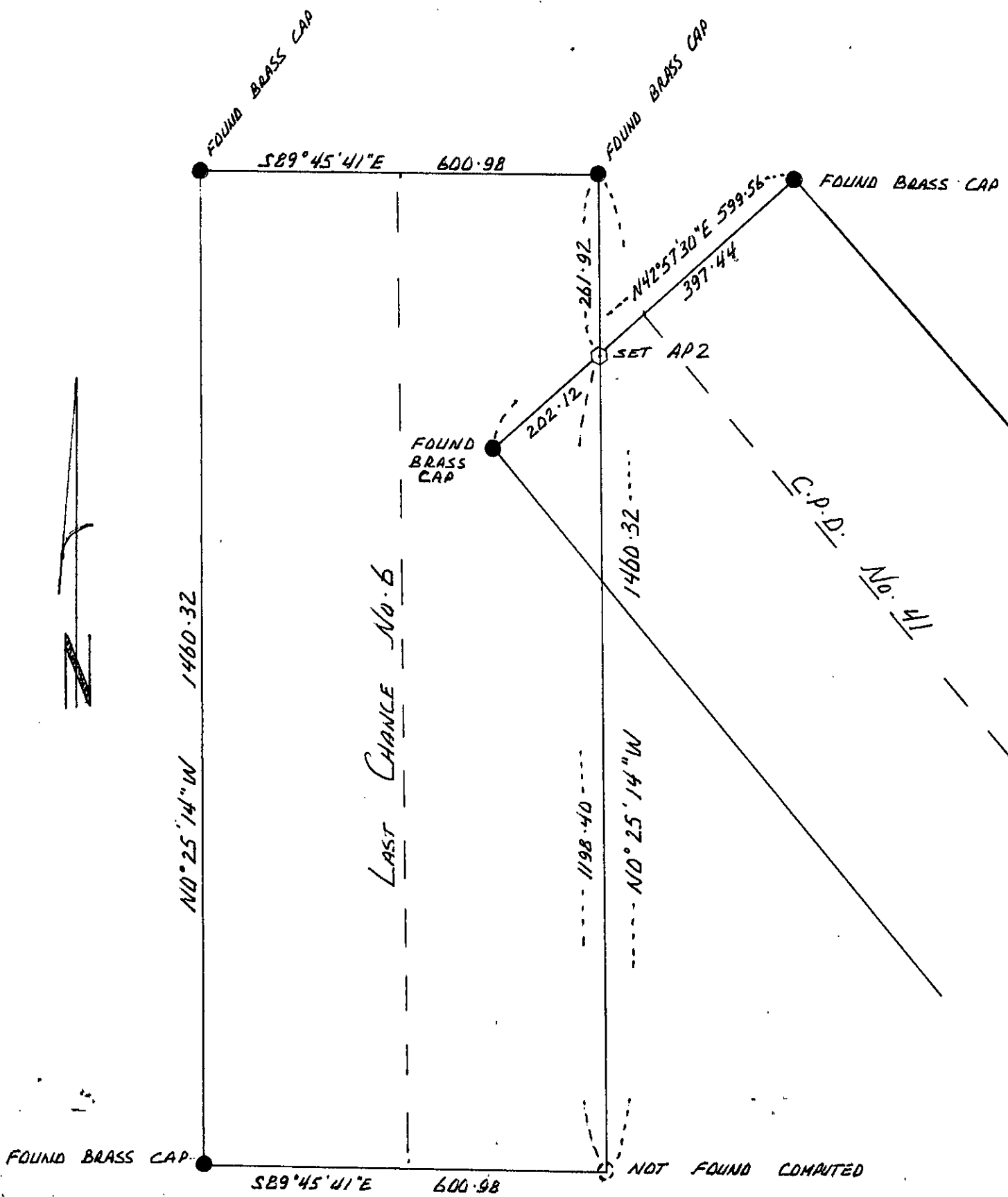
Office of Clerk and Recorder, County of Lincoln. This "corner record" was filed for record on MAY 16, 1995 was noted on the cross-index plat and is assigned page No. 7350 in book No.

Carol M. Cummins By DB
County Official

Sec. 10



Cross Index No. T. 31N R. 30W PMM



AP 2 WAS SET AT THE INTERSECTION OF THE EASTERLY LINE OF LAST CHANCE No. 6 AND THE NORTHWESTERLY LINE OF C.P.D. No. 41

