

CERTIFIED LAND CORNER RECORDATION
(REFERENCE FSM 7153.53)

DESCRIPTION OF CORNER EVIDENCE FOUND, AND ORIGINAL RECORD (IF KNOWN)

Found a standard brass cap monument marked as shown.
From which; A 14" larch bears N57°W, 18.5 ft., mkd W 1/16 S29 BT
A 6" fir bears S21°E, 19.0 ft., mkd W 1/16 S32 BT



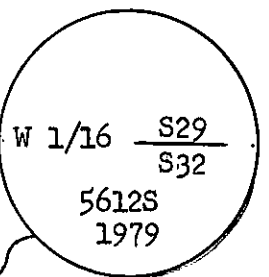
A

DESCRIPTION OF MONUMENT AND ACCESSORIES ESTABLISHED
TO PERPETUATE THE ORIGINAL LOCATION OF THIS CORNER:

Date of work: 1979

Set a 2 1/2" x 30" aluminum pipe, 2 1/4" in ground with a collar of stone
Al. cap marked as shown:
from which

A larch, 1 1/4" dia., bears N64°W, 21.2 Ft., scribed W 1/16 S29 BT
A douglas fir, 6" dia., bears S10°E, 18.3 Ft., scribed W 1/16
S32 BT

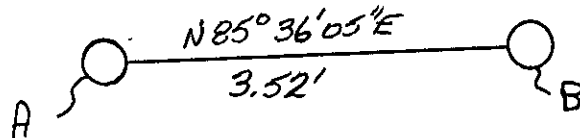


Place a N. F. Boundary post at corner position.

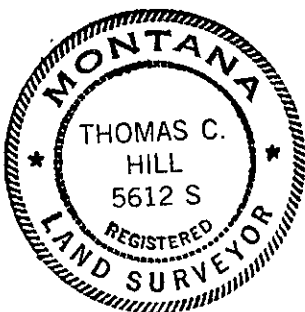
B

SKETCH, WITH COURSE AND DISTANCE TO ADJACENT CORNERS IF DETERMINED IN THIS SURVEY.
(MAY SKETCH OR PASTE REPRODUCTION ON REVERSE SIDE.)

Differences in corner position is a result of a disagreement in the proportioning
of the 1/4 corner, which falls in the Kootenai River. See Certificate of
Survey No. 753 for further details.



Surveyor's Seal



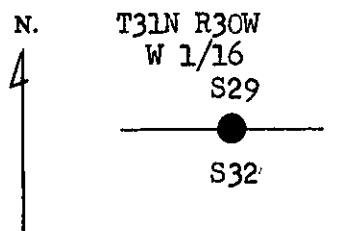
I, Anthony J. Bachman
certify that the information shown herein is true and
correct.

Anthony J. Bachman
Signature of Ground Party Chief

I, Thomas C. Hill
certify that I have carefully performed or reviewed the
work done on the diagrammed corner as reported on this
recording form and approve the same.

Thomas C. Hill
Signature of Surveyor

DIAGRAM OF CORNER:



● = Corner recorded on the sheet

5612-S
Registration Number

Office of Clerk and Recorder, County of Lincoln

This "corner record" was filed for record on the 3rd day of March, 1980, was noted on the cross-index plat and is
assigned page No. 638, in book No. 1

Chas. L. Vaughan, Jr. Deputy
County Official

Cross Index No. 16 T. 31 R. 30 Mer.