

CERTIFIED LAND CORNER RECORDATION  
(REFERENCE FSM 7153.53)

DESCRIPTION OF CORNER EVIDENCE FOUND, AND ORIGINAL RECORD (IF KNOWN)

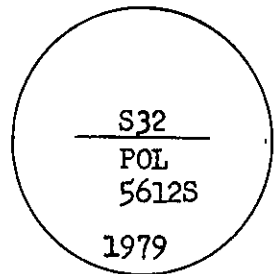
None

DESCRIPTION OF MONUMENT AND ACCESSORIES ESTABLISHED  
TO PERPETUATE THE ORIGINAL LOCATION OF THIS CORNER:

Date of work: 1979

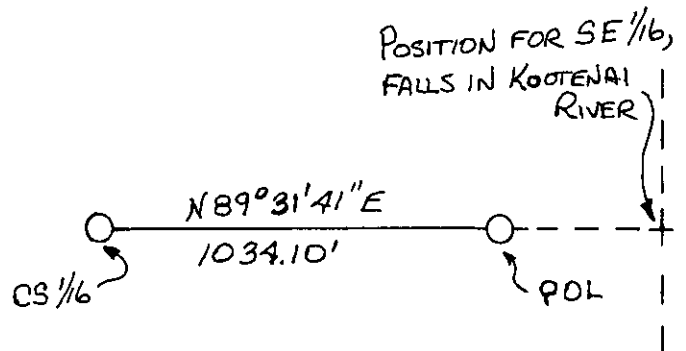
Set a 2 1/2" X 30" aluminum pipe, 10" in ground, raise a mound of stone to  
secure pipe. Al. cap marked as shown:  
from which;

- A fir, 8" dia., bears S10W, 21.1 Ft., scribed P.O.L.
- A fir, 5" dia., N60°W, 1.7 Ft., scribed P.O.L.



SKETCH, WITH COURSE AND DISTANCE TO ADJACENT CORNERS IF DETERMINED IN THIS SURVEY.  
(MAY SKETCH OR PASTE REPRODUCTION ON REVERSE SIDE.)

See Certificate of Survey No. 753



Surveyor's Seal



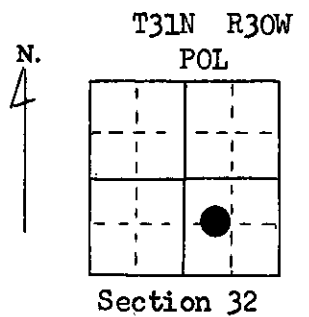
I, Anthony J. Bachman  
certify that the information shown herein is true and  
correct.

Anthony J. Bachman  
Signature of Ground Party Chief

I, Thomas C. Hill  
certify that I have carefully performed or reviewed the  
work done on the diagrammed corner as reported on this  
recording form and approve the same.

Thomas C. Hill  
Signature of Surveyor

DIAGRAM OF CORNER:



= Corner recorded on the sheet

5612-S  
Registration Number

Office of Clerk and Recorder, County of Lincoln

This "corner record" was filed for record on the 3rd day of March 1980, was noted on the cross-index plat and is  
assigned page No. 637, in book No. 1

Charles L. Vaughn, Deputy  
County Official

Cross Index No. 7-8 T. 31 R. 30 Mer.