

**CERTIFIED LAND CORNER RECORDATION**

**DESCRIPTION OF CORNER EVIDENCE FOUND, AND ORIGINAL RECORD (IF KNOWN)**

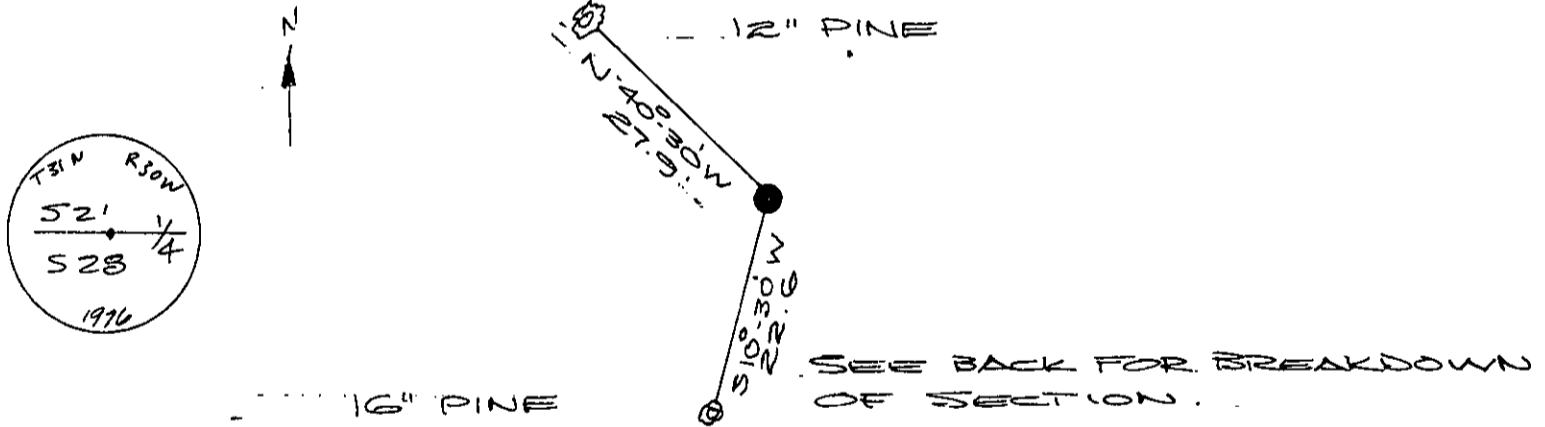
FOUND: NONE  
 RECORD: AT 39.85 CHAINS FROM NE COR  
 OF SEC 28 SET A SLATE STONE MARKED  
 1/4 N. FACE. RAISE A MOUND OF STONE  
 2' X 1 1/2' NORTH OF CORNER

**DESCRIPTION OF MONUMENT AND ACCESSORIES ESTABLISHED  
 TO PERPETUATE THE ORIGINAL LOCATION OF THIS CORNER:**

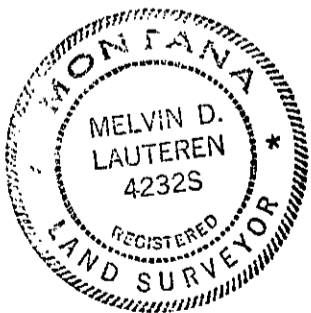
Date of work: MAY 1976

- ① WE SET A 1" BRASS - CAPPED PIPE STAMPED AS PER SKETCH.
- ② WE MAKE 2 REFERENCE MONUMENTS PER SKETCH.

**SKETCH, WITH COURSE AND DISTANCE TO ADJACENT CORNERS IF DETERMINED IN THIS SURVEY.  
 (MAY SKETCH OR PASTE REPRODUCTION ON REVERSE SIDE.)**



Surveyor's Seal



I, K. DAVIS  
 certify that the information shown herein is true and correct.

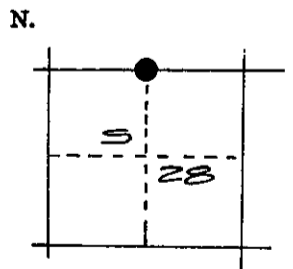
K. Davis  
 Signature of Ground Party Chief

I, MELVIN LAUTEREN  
 certify that I have carefully performed or reviewed the work done on the diagrammed corner as reported on this recordation form and approve the same.

Melvin D. Lauteren  
 Signature of Surveyor

4232.5  
 Registration Number

**DIAGRAM OF CORNER:**



= Corner recorded on the sheet

N 1/4 5 28  
T 31 N, R 30 W, P.M.M.

Office of Clerk and Recorder, County of Lincoln

This "corner record" was filed for record on the 29<sup>th</sup> day of June, 1976, was noted on the cross-index plat and is assigned page No. 469, in book No. 1

Edward L. Vaughn, Mae Watson, Deputy  
 County Official

