

**CERTIFIED LAND CORNER RECORDATION**

DESCRIPTION OF CORNER EVIDENCE FOUND, AND ORIGINAL RECORD (IF KNOWN)

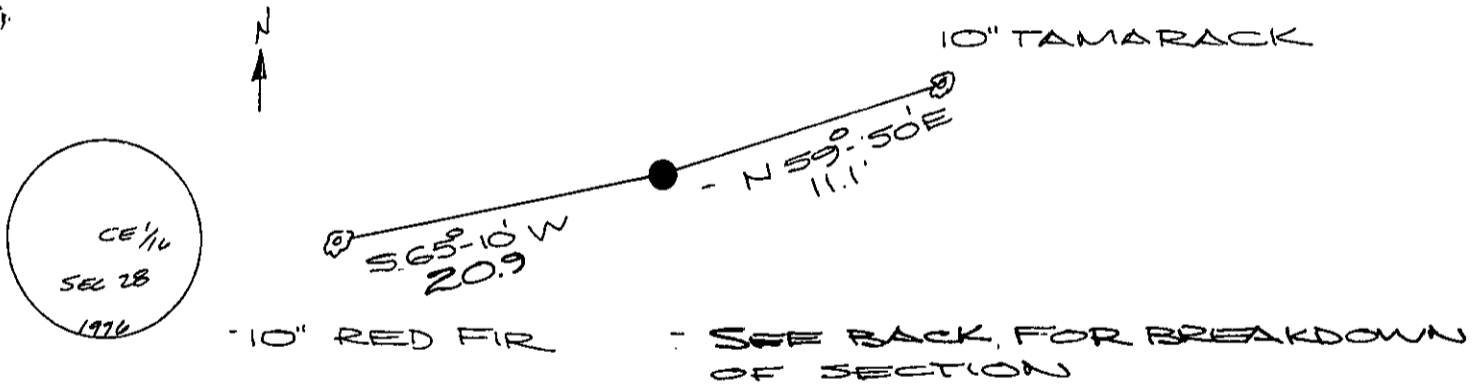
FOUND: NONE  
RECORD: NONE PREVIOUS

DESCRIPTION OF MONUMENT AND ACCESSORIES ESTABLISHED  
TO PERPETUATE THE ORIGINAL LOCATION OF THIS CORNER:

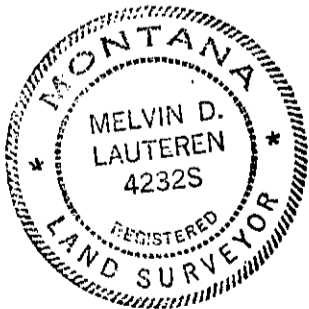
Date of work: MAY 1976

- ① WE SET A 1" ID. BRASS-CAPPED PIPE MARKED AS PER SKETCH.
- ② WE MAKE 2 REFERENCE MONUMENTS PER SKETCH.

SKETCH, WITH COURSE AND DISTANCE TO ADJACENT CORNERS IF DETERMINED IN THIS SURVEY.  
(MAY SKETCH OR PASTE REPRODUCTION ON REVERSE SIDE.)



Surveyor's Seal



I, K. DAVIS  
certify that the information shown herein is true and correct.

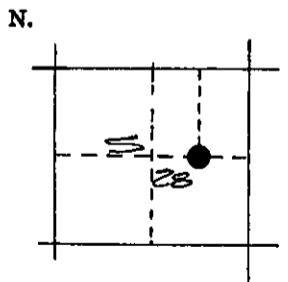
K. Davis  
Signature of Ground Party Chief

I, MELVIN LAUTEREN  
certify that I have carefully performed or reviewed the work done on the diagrammed corner as reported on this recordation form and approve the same.

Melvin D. Lauteren  
Signature of Surveyor

4232-S  
Registration Number

DIAGRAM OF CORNER:



= Corner recorded on the sheet

CE 1/16 S 28  
T 31N, R 30W, PMM

Office of Clerk and Recorder, County of Lincoln

This "corner record" was filed for record on the 2nd day of June 1976, was noted on the cross-index plat and is assigned page No. 464, in book No. 1

Eleanor L. Laughlin, Mae Watson, Deputy  
County Official

