

CERTIFIED CORNER RECORDATION

Corner 1/4 S30|S29 T. 31 N. R. 30 W. P.M.M. LINCOLN County

I. Record: 1898 Original G.L.O. Subdivision and Meander lines of Fractional Township 31 North, Range 30 West, by Paul S. A. Rickel: 40.00 chs. Set a slate stone 20x10x8 ins., 15 ins. in the ground, for 1/4 Sec. Cor., marked 1/4 on W. face, from which:

- A pine, 28 ins diam., bears N84°W, 55 lks. dist., marked 1/4 S 30 BT.
- A pine, 18 ins. diam., bears S84°24'E, 36 lks. dist., marked 1/4 S 29 BT.

1959 B.L.M. Remonumentation by Gerald F. Pittman, Richard L. Larimer and Harold W. Grusing: The 1/4 sec. cor. of secs. 29 and 30, monumented with a slate stone, 20x10x8 ins., firmly set and marked 1/4 on the W. face and witnessed by the remains of one of the original bearing trees.

At the corner point

Set an Iron post, 30 ins. long, 2 1/2 ins. diam., 27 ins. in the ground, with brass cap mkd.

from which:

The remains of the original bearing tree:

- A dead pine, 15 ins. diam., bears S84 1/4°E, 36 lks. dist., marked 1/4 S BT.
(Record: S84 24'E, 36 lks.)

The new bearing trees:

- A fir, 6 ins. diam., bears N39°E, 15 lks. dist., marked 1/4 S 29 BT.
- A fir, 9 ins. diam., bears N33°W, 30 lks. dist., marked 1/4 S 30 BT.

Bury the original stone alongside the iron post.

1974 Certified Corner Recordation by John C. Erickson, Reg. No. 3979 S: T31N R30W Montana Principal Meridian G.L.O. notes book 8942 page 47 has an iron post 30" long 2 1/2" diameter 27" in the ground marked Found the brass cap undisturbed and in good condition.

Record: 16" dead pine bearing S84 1/2°E, 36 lks., marked 1/4 S BT.
Found: Bearing tree still in tact.

Record: 6" fir bearing N39°E, 15 lks., marked 1/4 S 29 BT.
Found: Bearing tree alive and still growing and presently 8" in diameter.

Record: 9" fir bearing N33°W, 30 lks., marked 1/4 S 30 BT.
Found: Bearing tree alive still growing and presently 14" in diameter.

No added monumentation.

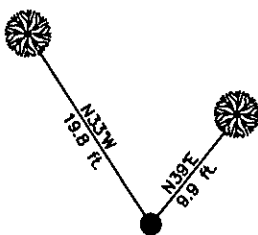
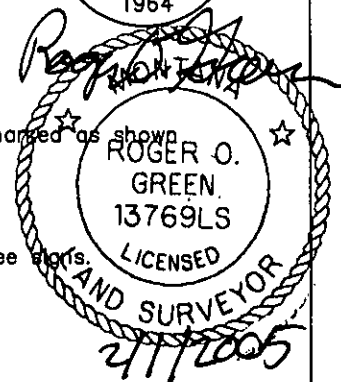
II. Found: 2 1/2 in. diam. iron pipe, 4 ins. above ground, with a 3 1/4 in. diam. BLM brass cap marked as shown above from which:
A fir, 9 ins. diam., bears N39°E, 9.9 ft. dist., marked with a healed face.
A fir, 13 ins. diam., bears N33°W, 19.8 ft. dist., marked with a healed face.

III. Painted the healed faces red and 6 in. red bands around bearing trees. Posted new bearing tree signs.

Date of Fieldwork: 7/15/2004
Survey crew: Steve Boyer, Tom Hommel
Magnetic declination: 18° East assumed
Equipment used: Hand compass and loggers tape
U.S. Forest Service, Supervisors Office, 1101 Hwy. 2 West, Libby, MT 59923 (406) 293-6211

T31N R30W
1/4
S30|S29
1964

T31N R30W
1/4
S30|S29
1964



SKETCH OF CORNER

NOT TO SCALE

CERTIFICATION

I, Steven A. Boyer 9750LS
certify the information shown herein is true and correct.

Steven A. Boyer
Signature Ground Party Chief

I, Roger O. Green
certify that this Corner Record correctly represents work performed by me or under my direction in compliance with the "Corner Recordation Act" 190-22-101, et seq., M.C.A.)

Roger O. Green
Signature of Surveyor & Seal

Date: 07/15/2004 Reg. No. 13769LS

Employer: U. S. Forest Service

Office of Clerk and Recorder, County of Lincoln. This "corner

record" was filed 182254 BOOK: CCR CC&R'S PAGE: 10779 Pages: 1

was noted on th STATE OF MONTANA LINCOLN COUNTY

book No. RECORDED: 02/02/2005 9:20 KOI: CC&R'S

CORAL M. CUMMINGS CLERK AND RECORDER

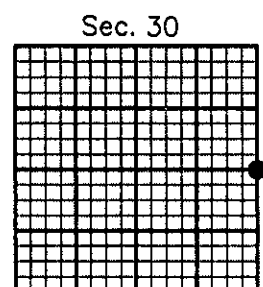
FEE: \$0.00

BY: Jeanne Senne

TO: FILED

Cross Index No. T-5 T. 31N. R. 30W. P.M., MT

Adopted July 1, 1981, Montana Board of Professional Engineers & Land Surveyors



● corner this sheet