

CERTIFIED CORNER RECORDATION

Corner C-S-SW-NE 1/256 S34 T 31 N. R. 31 W. P.M.M. LINCOLN County

- I. Record: 2000 Certificate of Survey No. 2937 by Davis Surveying.
2000 Certified Corner Recordation page 10453:

Set a $\frac{5}{8}$ inch by 24 inch rebar with a $\frac{3}{4}$ inch aluminum cap 23 inches in the ground from which:

A 8 inch DBH Ponderosa pine bears N.50°W. 6.10 ft. dist. scribed
C-S-SW-NE 1/256 S34 BT.

A 10 $\frac{3}{4}$ inch DBH Ponderosa pine bears N.83°E. 32.50 ft. dist. scribed
C-S-SW-NE 1/256 S34 BT.

II. Found:

A Ponderosa pine, 8 ins. diam., bears N.50°W., 6.10 ft. dist.,
mkd. C-S-SW-NE 1/256 S34 BT.

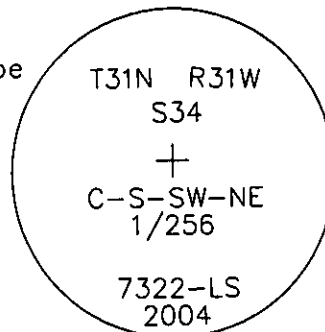
A Ponderosa pine, 10 ins. diam., bears N.83°E., 32.50 ft dist.,
mkd. C-S-SW-NE 1/256 S34 BT.

- III. Perpetuation: At a point determined from record bearing tree distances, set a $\frac{5}{8}$ in. diam. steel rebar 24 ins. long 22 ins. in the ground with a $\frac{3}{4}$ in. diam. Alum. cap mkd. as shown below.

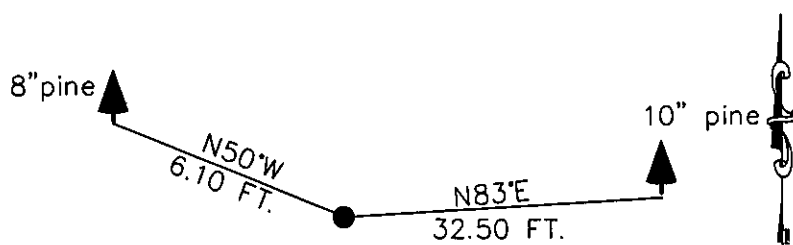
Painted faces and 6 in. wide red bands to all bearing trees and attached Land Survey Monument and Bearing Tree signs where needed.

Magnetic declination: 20° East assumed

Equipment used: Hand compass and loggers tape



Kootenai Surveyors Inc., 314 California Av., Libby, MT. 59923 (406) 293-4354



SKETCH OF CORNER

CERTIFICATION

I, Kenneth Kern
certify the information shown herein is true and correct.
Kenneth Kern
Signature Ground Party Chief

I, Alvah F. Hughes
certify that this Corner Record correctly represents work
performed by me or under my direction in compliance with
the "Corner Recordation Act" (70-22-101, et seq., M.C.A.)
Alvah F. Hughes 7322LS
Signature of Surveyor & Seal

Date: 04/26/2004 Reg. No. 7322-LS

Employer: Kootenai Surveyors Inc.

Office of Clerk and Recorder, County of Lincoln This "corner

record" was filed for record

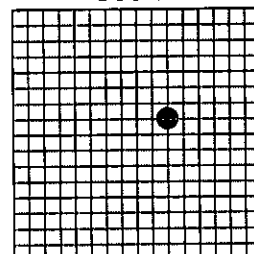
was noted on the cross-index
book No. _____

181337 BOOK: CCR CC&R'S PAGE: 10733 Pages: 1
STATE OF MONTANA LINCOLN COUNTY
RECORDED: 12/17/2004 8:46 KOI: CC&R'S
CORAL M. CUMMINGS CLERK AND RECORDER
FEE: \$0.00 BY: Coral M. Cummings
TO: FILED ,

Cross Index No. WX 15-16 T. 31N. R. 31W. P.M., MT

Adopted July 1, 1981, Montana Board of Professional Engineers & Land Surveyors

Sec. 34



• corner this sheet