

## CERTIFIED CORNER RECORDATION

Corner C-W-E 1/64 Sec.34 T. 31 N. R. 31 W. P.M.M. LINCOLN County

- I. Record: 2000 Certificate of Survey No. 2937 by Davis Surveying.  
2000 Certified Corner Recordation page 10451:

Set a  $\frac{5}{8}$  inch by 24 inch rebar with a  $3\frac{1}{4}$  inch aluminum cap 23 inches in the ground from which:

A 14 inch DBH Ponderosa pine bears N.9°E. 44.80 ft. dist. scribed  
C-W-E 1/64 S34 BT.

A 10 inch DBH Ponderosa pine bears N.81°E. 14.60 ft. dist. scribed  
C-W-E 1/64 S34 BT.

II. Found:

A Ponderosa pine, 14 ins. diam., bears N.9°E., 44.80 ft. dist.,  
mkd. C-W-E 1/64 S34 BT.

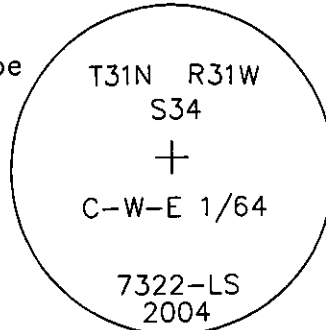
A Ponderosa pine, 10 ins. diam., bears N.81°E., 14.60 ft dist.,  
mkd. C-W-E 1/64 S34 BT.

- III. Perpetuation: At a point determined from record bearing tree distances, set a  $\frac{5}{8}$  in. diam. steel rebar 24 ins. long 22 ins. in the ground with a  $3\frac{1}{4}$  in. diam. Alum. cap mkd. as shown below.

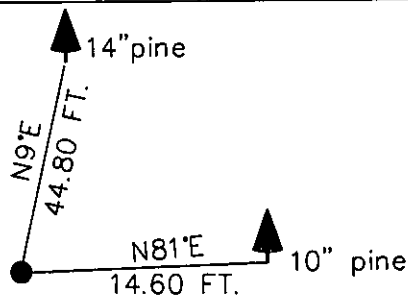
Painted faces and 6 in. wide red bands to all bearing trees and attached Land Survey Monument and Bearing Tree signs where needed.

Magnetic declination: 20° East assumed

Equipment used: Hand compass and loggers tape



Kootenai Surveyors Inc., 314 California Av., Libby, MT. 59923 (406) 293-4354



SKETCH OF CORNER

CERTIFICATION  
I, Kenneth Kern  
certify the information shown herein is true and correct.  
Kenneth Kern  
Signature Ground Party Chief

I, Alvah F. Hughes  
certify that this Corner Record correctly represents work  
performed by me or under my direction in compliance with  
the "Corner Recordation Act" (79-22-101, et seq., M.C.A.)  
Alvah F. Hughes 7322LS  
Signature of Surveyor & Seal

Date: 04/26/2004 Reg. No. 7322-LS

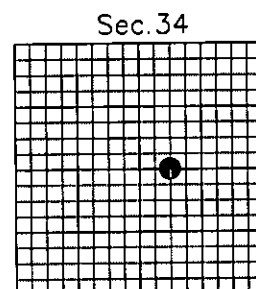
Employer: Kootenai Surveyors Inc.

Office of Clerk and Recorder, County of Lincoln This "corner

record" was filed for r: 181336 BOOK: CCR CC&R'S PAGE: 10732 Pages: 1  
was noted on the cross: STATE OF MONTANA LINCOLN COUNTY  
book No. RECORDED: 12/17/2004 8:45 KOI: CC&R'S  
CORAL M. CUMMINGS CLERK AND RECORDER  
FEE: \$0.00 BY: Coral M. Cummings  
TO: FILED , Deputy

Cross Index No. X 15-16 T. 31 N. R. 31 W. P.M., MT

Adopted July 1, 1981, Montana Board of Professional Engineers & Land Surveyors



• corner this sheet