

CERTIFIED LAND CORNER RECORDATION

DESCRIPTION OF CORNER EVIDENCE FOUND, AND ORIGINAL RECORD (IF KNOWN)

DESC. OF COR. EVIDENCE FOUND: N 1/4 COR. S12, T31N, R29W, P.M.M.
Found B.L.M. Brass Cap, 1972, From Which:

A Doug Fir, 12 ins. dia., Bears N 11 3/4°W, 14 Lks., By ART 1972.
A Doug Fir, 13 ins. dia., Bears S49°W, 66 Lks., By ART 1972.

Original GLO: N 1/4 Cor. S12, T31N, R29W, P.M.M.
Set a Slate Stone 14"X12"X4", 9 ins. in ground.
From Which: A Fir 8 ins. dia., Bears N15°30'E, 83 lks.
A Tamarack, 24 ins. dia., Bears S20°W, 50 Lks.

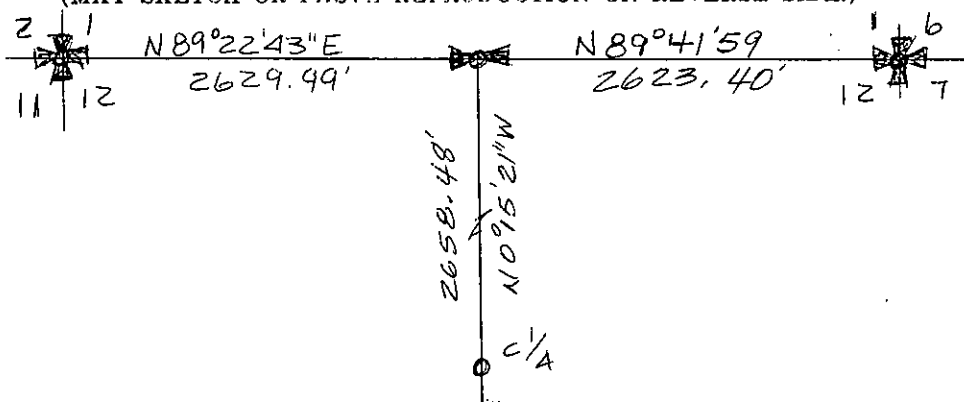
{SEE REVERSE}

DESCRIPTION OF MONUMENT AND ACCESSORIES ESTABLISHED
TO PERPETUATE THE ORIGINAL LOCATION OF THIS CORNER:

Date of work: Oct. 1980

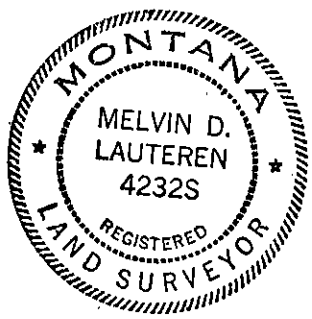
N.A.

SKETCH, WITH COURSE AND DISTANCE TO ADJACENT CORNERS IF DETERMINED IN THIS SURVEY.
(MAY SKETCH OR PASTE REPRODUCTION ON REVERSE SIDE.)



SEE CR 1-930 FOR VIEW OF ENTIRE SECTION

Surveyor's Seal



I, Kenneth Kern
certify that the information shown herein is true and correct.

Kenneth R Kern

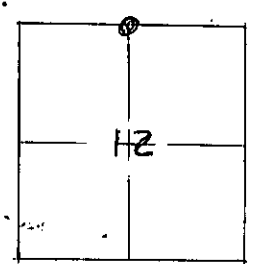
Signature of Ground Party Chief

I, Melvin D. Lauteren
certify that I have carefully performed or reviewed the work done on the diagrammed corner as reported on this recordation form and approve the same.

Melvin D. Lauteren

Signature of Surveyor

DIAGRAM OF CORNER:
S12, T31N R29W
N.



● = Corner recorded on the sheet

N 1/4, S12

4232-5
Registration Number

Office of Clerk and Recorder, County of Lincoln

This "corner record" was filed for record on the 31st day of December, 1980, was noted on the cross-index plat and is assigned page No. 970, in book No. 1

Chas. L. Tausch
County Official

Cross Index No. E-23 T. 31N R. 29W Mer.

Remonumentation Note

Set an Iron Post, 30 ins. Long, 2 1/2 ins. dia., 24 ins. in the ground,
with Brass Cap,
From Which New Bearing Trees:

A Fir, 11 ins. dia., Bears N 11 3/4°E, 14 Links, Mkd 1/4, S12, B.T.

A Fir, 12 ins. dia., Bears S49°W, 66 Links, Mkd. 1/4 S12, B.T.