

CERTIFIED LAND CORNER RECORDATION

DESCRIPTION OF CORNER EVIDENCE FOUND, AND ORIGINAL RECORD (IF KNOWN)

Description of Cor. Evidence Found: NW Cor. S 12, T31N, R29W, P.M.M. Found B.L.M. B.C., 1972, From Which:

- A Larch, 20 ins. dia., Bears N24°W, 48 Lks., 1962.
A Larch, 12 ins. dia., Bears S44°W, 15 Lks., 1962.
A Larch, 6 ins. dia., Bears S21°30'E, 16 Lks., 1972 By ART.
A Larch 10 ins. dia., Bears S73°E, 19 lks., 1962.

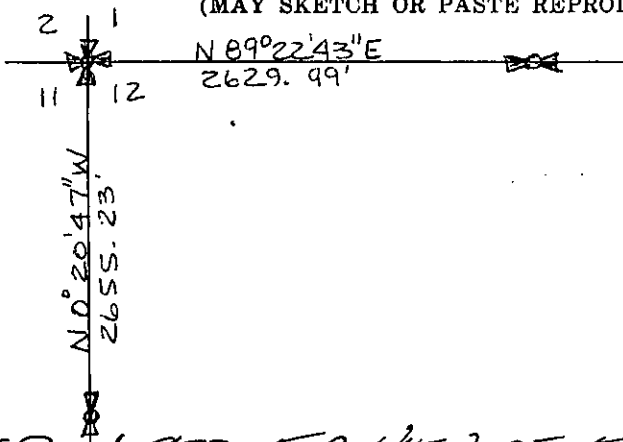
{SEE REVERSE}

DESCRIPTION OF MONUMENT AND ACCESSORIES ESTABLISHED TO PERPETUATE THE ORIGINAL LOCATION OF THIS CORNER:

Date of work: Oct. 1980

NA

SKETCH, WITH COURSE AND DISTANCE TO ADJACENT CORNERS IF DETERMINED IN THIS SURVEY. (MAY SKETCH OR PASTE REPRODUCTION ON REVERSE SIDE.)



SEE CR. 1-930 FOR VIEW OF ENTIRE SECTION

Surveyor's Seal



I, Kenneth Kern certify that the information shown herein is true and correct.

Handwritten signature of Kenneth R. Kern

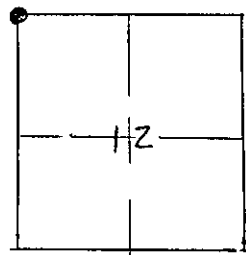
Signature of Ground Party Chief

I, Melvin D. Lauteren certify that I have carefully performed or reviewed the work done on the diagrammed corner as reported on this recordation form and approve the same.

Handwritten signature of Melvin D. Lauteren

Signature of Surveyor

DIAGRAM OF CORNER: S12, T31N, R29W N.



● = Corner recorded on the sheet NW COR. S 12

4232-5 Registration Number

Office of Clerk and Recorder, County of Lincoln

This 'corner record' was filed for record on the 31st day of December, 1980, was noted on the cross-index plat and is assigned page No. 968, in book No. 1

Handwritten signature of County Official

County Official

ORIGINAL GLO: NW Cor. S1 T31N, R29W, P.M.M.

Set a Slate Stone, 24"X8"X6", 18" in ground From Which:

- A Tamarack, 6 ins. dia., Bears N72°10'E, 18 Lks.
- A Tamarack, 6 ins. dia., Bears S37°20'E, 27 Lks.
- A Tamarack, 6 ins. dia., Bears S49°45'W, 15 Lks.
- A Tamarack, 7 ins. dia., Bears N25°40'W, 49 Lks.

Remonumentation Notes:

Set an Iron Post, 30 ins. long, 2 1/2 ins. dia., 24 ins. in the ground
With Brass Cap, From Which a New Bearing Tree:

- A Larch, 6 ins. dia., Bears S21°30'E, 16 Lks, Mkd. T31N, R29W, S 12 B.T.