

CERTIFIED LAND CORNER RECORDATION

DESCRIPTION OF CORNER EVIDENCE FOUND, AND ORIGINAL RECORD (IF KNOWN)

DESC. OF CORNER EVIDENCE FOUND: E 1/4 COR. S12, T31N, R29W, P.M.M.
Found B.L.M. Brass Cap 1972 From Which:

- A Larch 12 ins. dia., Bears S60°30'W, 57 Lks., By ART 1972.
- A Dead Pine, 16 ins. dia., Bears S67 3/4°W, 30 Lks.
- A Pine, 7 ins. dia., Bears N20 1/2°W, 28 Lks.

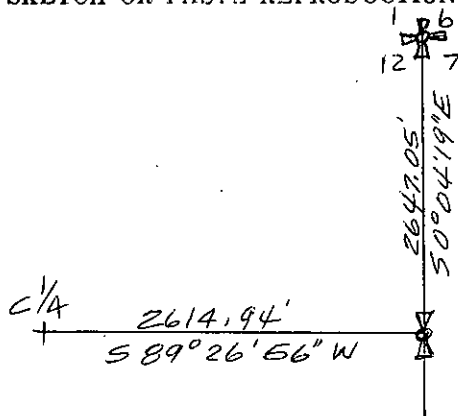
{ SEE REVERSE }

DESCRIPTION OF MONUMENT AND ACCESSORIES ESTABLISHED
TO PERPETUATE THE ORIGINAL LOCATION OF THIS CORNER:

Date of work: OCT. 1980

N.A.

SKETCH, WITH COURSE AND DISTANCE TO ADJACENT CORNERS IF DETERMINED IN THIS SURVEY.
(MAY SKETCH OR PASTE REPRODUCTION ON REVERSE SIDE.)



SEE CP. 1-930 FOR VIEW OF ENTIRE SECTION

Surveyor's Seal



I, Kenneth Kern, certify that the information shown herein is true and correct.

Kenneth R Kern

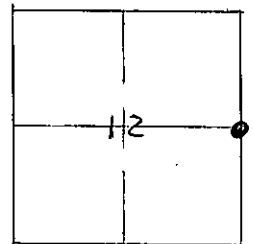
Signature of Ground Party Chief

I, Melvin D. Lauteren, certify that I have carefully performed or reviewed the work done on the diagrammed corner as reported on this recordation form and approve the same.

Melvin D. Lauteren

Signature of Surveyor

DIAGRAM OF CORNER:
S12, T31N, R29W
N.



⊙ = Corner recorded on the sheet

E 1/4, S12

4232-5
Registration Number

Office of Clerk and Recorder, County of Lincoln

This "corner record" was filed for record on the 31st day of December, 1980, was noted on the cross-index plat and is

assigned page No. 967, in book No. 1

Eleanor L. Vaughan
County Official

ORIGINAL RECORD: E 1/4 COR. S 12, T31N, R29W, P.M.M.

Set a Slate Stone 16"X8"X8", 11" in Ground From Which:

A Pine 24 ins. dia., Bears N44°30'W, 130 Lks.

A Pine, 24 ins. dia., Bears N08°E, 120 Lks.

Remonumentation Notes:

Set an Iron Post 30 ins. long, 2 1/2 ins. dia., 24 ins. in the Ground.

From Which a New B.T. :

A Larch, 12 ins. dia., Bears S60 1/2°W, 57 Lks., Mkd, X B.T.