

CERTIFIED LAND CORNER RECORDATION

DESCRIPTION OF CORNER EVIDENCE FOUND, AND ORIGINAL RECORD (IF KNOWN)

DESC. OF CORNER EVIDENCE FOUND: NE COR. S12, T31N, R29W, P.M.M.
Found B.L.M. Brass Cap, 1972 From Which:

- A Larch, 9 ins. dia., Bears N32°30'W, 64 Lks, By ART 1972.
- A Doug Fir, 20 ins. dia., Bears N13°00'E, 48 Lks, By JRF 1962.
- A Larch, 14 ins. dia., Bears S58°00'W, 45 Lks, By JRF 1962.
- A Larch 22 ins. dia., Bears S12°00'E, 83 Lks, By JRF 1962.

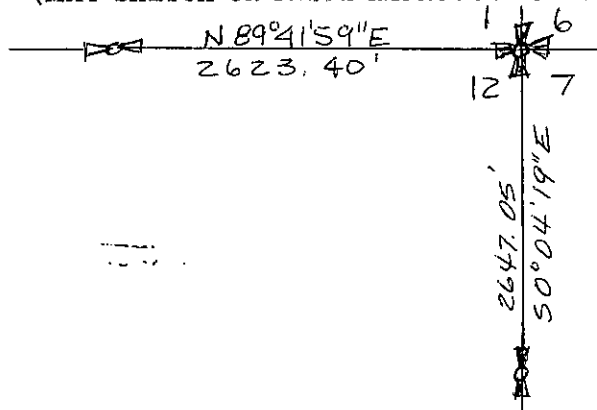
{SEE REVERSE}

DESCRIPTION OF MONUMENT AND ACCESSORIES ESTABLISHED
TO PERPETUATE THE ORIGINAL LOCATION OF THIS CORNER:

Date of work: Oct. 1980

N.A.

SKETCH, WITH COURSE AND DISTANCE TO ADJACENT CORNERS IF DETERMINED IN THIS SURVEY.
(MAY SKETCH OR PASTE REPRODUCTION ON REVERSE SIDE.)



SEE CR. 1-930 FOR VIEW OF ENTIRE SECTION.

Surveyor's Seal

I, Kenneth Kern

certify that the information shown herein is true and correct.

Kenneth R Kern

Signature of Ground Party Chief

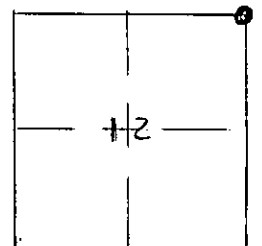
I, Melvin D. Lauteren

certify that I have carefully performed or reviewed the work done on the diagrammed corner as reported on this recordation form and approve the same.

Melvin D. Lauteren

Signature of Surveyor

DIAGRAM OF CORNER:
S12, T31N R29W
N.



① = Corner recorded on the sheet

NE COR., S12



4232.5
Registration Number

Office of Clerk and Recorder, County of Lincoln

This "corner record" was filed for record on the 31st day of December, 1980, was noted on the cross-index plat and is

assigned page No. 966, in book No. 1

Glenn L. Trenchard
County Official

ORIGINAL GLO: NE Cor. S12. T31N, R29W, P.M.M.

Set a Slate Stone 18"X12"X4", 12" in the ground From Which:

A Fir, 16 ins. dia., Bears N13°40'E, 40 Lks.

A Tamarack 18 ins. dia., Bears S13°E, 72 Lks.

A Tamarack 10 ins. dia., Bears S88°40'W, 35 Lks.

A Fir, 16 ins. dia., Bears N26°10'W, 31 Lks.

Remonumentation Notes:

SET AN IRON POST 30 INS. LONG, 2 1/2 INS. DIA, 2 INS. IN GRD.
No New Accessories Established.