

CERTIFIED LAND CORNER RECORDATION

DESCRIPTION OF CORNER EVIDENCE FOUND, AND ORIGINAL RECORD (IF KNOWN)

DESC. OF CORNER EVIDENCE FOUND: W 1/4, S12, T31N, R29W, P.M.M.
Found B.L.M. Brass Cap, 1972 From Which:

- A Larch, 15 ins. dia., Bears N35°W, 17 Lks., 1962.
- A Larch, 9 ins. dia., Bears S72°E, 20 Lks, 1962.

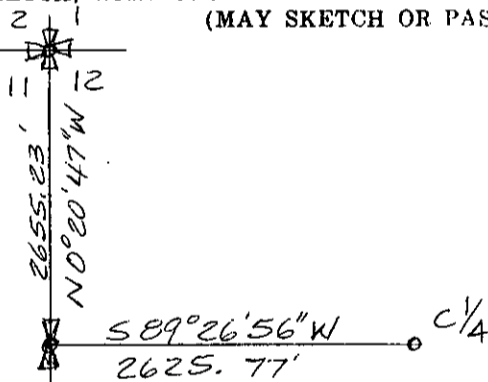
{ SEE REVERSE }

DESCRIPTION OF MONUMENT AND ACCESSORIES ESTABLISHED TO PERPETUATE THE ORIGINAL LOCATION OF THIS CORNER:

Date of work: OCT. 1980

N.A.

SKETCH, WITH COURSE AND DISTANCE TO ADJACENT CORNERS IF DETERMINED IN THIS SURVEY. (MAY SKETCH OR PASTE REPRODUCTION ON REVERSE SIDE.)



SEE CR. 1-930 FOR VIEW OF ENTIRE SECTION

Surveyor's Seal



I, Kenneth Kern certify that the information shown herein is true and correct.

Kenneth R Kern

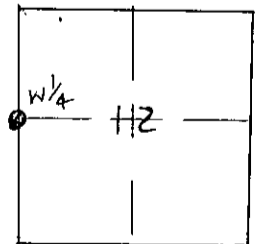
Signature of Ground Party Chief

I, Melvin D. Lauteren certify that I have carefully performed or reviewed the work done on the diagrammed corner as reported on this recordation form and approve the same.

Melvin D. Lauteren

Signature of Surveyor

DIAGRAM OF CORNER: S12, T31N R29W N.



● = Corner recorded on the sheet
W 1/4, S12

4232-5
Registration Number

Office of Clerk and Recorder, County of Lincoln

This "corner record" was filed for record on the 31st day of December, 1980, was noted on the cross-index plat and is assigned page No. 965, in book No. 1

Charles L. Vaughn, Deputy
County Official

Original GLO: W 1/4 Cor. 12, T31N, R29W, P.M.M.

Set a Slate Stone 24"X12"X8", 18 ins. in Ground From Which:

A Tamarack, 8 ins. dia., Bears N36°W, 18 Lks.

A Tamarack, 5 ins. dia., Bears S77°30'E, 18 lks.

Remonumentation Notes: *SET IRON POST 30" LONG, 2 1/2" DIA. 24 INS. IN GRD.*
No New Accessories Established.