

481

CERTIFIED LAND CORNER RECORDATION

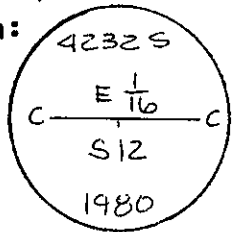
DESCRIPTION OF CORNER EVIDENCE FOUND, AND ORIGINAL RECORD (IF KNOWN)

No Original Record.
No Evidence Found.

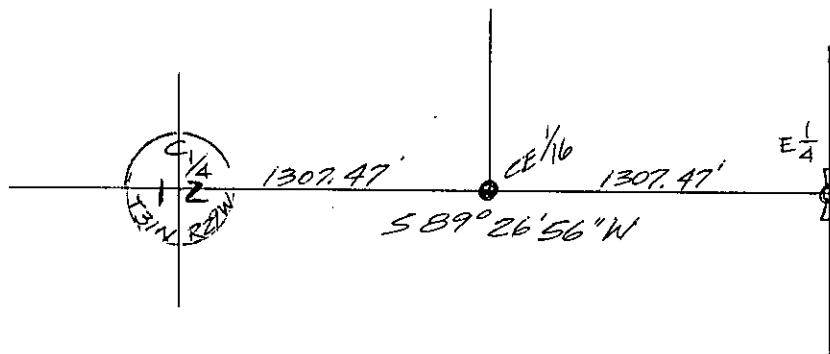
DESCRIPTION OF MONUMENT AND ACCESSORIES ESTABLISHED
TO PERPETUATE THE ORIGINAL LOCATION OF THIS CORNER:

Date of work: Oct. 1980

CE 1/16 Set an aluminum pipe 2 1/2" X 30", 26" in ground, with cap marked as shown for exact corner position from which:
A Larch, 13 ins. dia., bears S31°30'E, 22.15 feet distance, Scribed CE 1/16 B.T.
A Douglas Fir, 8 ins. dia., bears N32°30'E, 16.00 ft. distance, Scribed CE 1/16 B.T.



SKETCH, WITH COURSE AND DISTANCE TO ADJACENT CORNERS IF DETERMINED IN THIS SURVEY.
(MAY SKETCH OR PASTE REPRODUCTION ON REVERSE SIDE.)



SEE CR. 1-930 FOR VIEW OF ENTIRE SECTION

Surveyor's Seal



I, Kenneth Kern
certify that the information shown herein is true and correct.

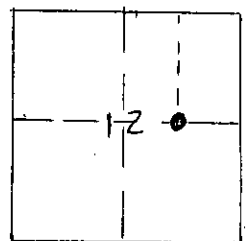
Kenneth R. Kern
Signature of Ground Party Chief

I, Melvin D. Lauteren
certify that I have carefully performed or reviewed the work done on the diagrammed corner as reported on this recordation form and approve the same.

Melvin D. Lauteren
Signature of Surveyor

DIAGRAM OF CORNER:

S12, T31N, R29W
N.



● = Corner recorded on the sheet

CE 1/16, S12

4232-S
Registration Number

Office of Clerk and Recorder, County of Lincoln
This "corner record" was filed for record on the 31st day of December, 1980, was noted on the cross-index plat and is assigned page No. 963, in book No. 1

Chambers L. Trough by Betty Bell
County Official Deputy
Cross Index No. G-24 T. 31N R. 29W Mer.