

481

CERTIFIED LAND CORNER RECORDATION

DESCRIPTION OF CORNER EVIDENCE FOUND, AND ORIGINAL RECORD (IF KNOWN)

No Original Record.
No Evidence Found.

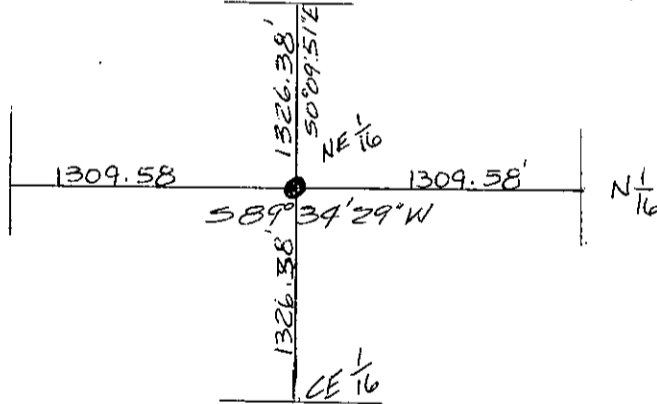
DESCRIPTION OF MONUMENT AND ACCESSORIES ESTABLISHED TO PERPETUATE THE ORIGINAL LOCATION OF THIS CORNER:

Date of work: Oct. 1980

NE 1/16 Set an aluminum pipe 2 1/2" X 30", 26" in ground, with cap marked as shown, for exact corner position from which:
A Grand Fir, 10 ins. dia., bears S33°W, 31.40 feet distance, Scribed NE 1/16 B.T.
A Douglas Fir, 14 ins. dia., bears S78°E, 42.80 ft. distance, Scribed NE 1/16 B.T.



SKETCH, WITH COURSE AND DISTANCE TO ADJACENT CORNERS IF DETERMINED IN THIS SURVEY. (MAY SKETCH OR PASTE REPRODUCTION ON REVERSE SIDE.)



SEE CR. 1930 FOR VIEW OF ENTIRE SECTION

Surveyor's Seal



I, Kenneth Kern certify that the information shown herein is true and correct.

Kenneth R. Kern

Signature of Ground Party Chief

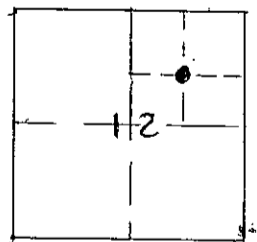
I, Melvin D. Lauteren certify that I have carefully performed or reviewed the work done on the diagrammed corner as reported on this recordation form and approve the same.

Melvin D. Lauteren

Signature of Surveyor

DIAGRAM OF CORNER:

S12, T31N, R29W
N.



● = Corner recorded on the sheet

NE 1/16, S12

4232-5
Registration Number

Office of Clerk and Recorder, County of Lincoln

This "corner record" was filed for record on the 31st day of December, 1980, was noted on the cross-index plat and is

assigned page No. 962, in book No. 1

Teleman L. Trough
County Official
Deputy