

CERTIFIED LAND CORNER RECORDATION

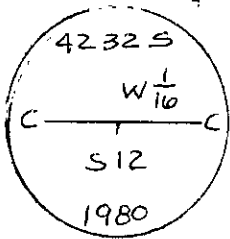
DESCRIPTION OF CORNER EVIDENCE FOUND, AND ORIGINAL RECORD (IF KNOWN)

No Original Record.
No Evidence Found.

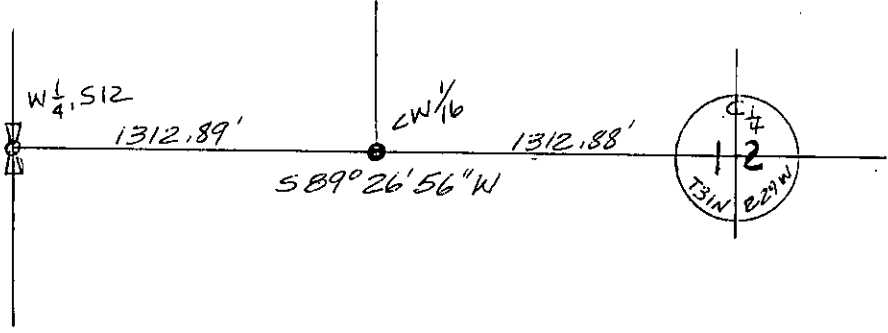
DESCRIPTION OF MONUMENT AND ACCESSORIES ESTABLISHED
TO PERPETUATE THE ORIGINAL LOCATION OF THIS CORNER:

Date of work: Oct. 1980

CW 1/16 Set an aluminum pipe 2 1/2" X 30", 26" in ground, with cap marked as shown for exact corner position from which:
A Grand Fir, 12 ins. dia., bears N49°00'W 7.05 feet distance, Scribed CW 1/16 B.T.
A Grand Fir, 10 ins. dia., bears S73°E, 4.15 feet distance, Scribed CW 1/16 B.T.



SKETCH, WITH COURSE AND DISTANCE TO ADJACENT CORNERS IF DETERMINED IN THIS SURVEY.
(MAY SKETCH OR PASTE REPRODUCTION ON REVERSE SIDE.)



SEE CR. 1-930 FOR VIEW OF ENTIRE SECTION.

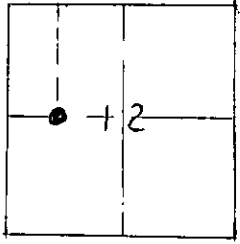
Surveyor's Seal



I, Kenneth Kern
certify that the information shown herein is true and correct.
Kenneth R. Kern
Signature of Ground Party Chief

I, Melvin D. Lauteren
certify that I have carefully performed or reviewed the work done on the diagrammed corner as reported on this recordation form and approve the same.
Melvin D. Lauteren
Signature of Surveyor

DIAGRAM OF CORNER:
S12, T31N, R29W
N.



● = Corner recorded on the sheet
CW 1/16, S12

4232-S
Registration Number

Office of Clerk and Recorder, County of Lincoln
This "corner record" was filed for record on the 31st day of December, 1980, was noted on the cross-index plat and is assigned page No. 961, in book No. 1
Cleaner L. Vaughn, by Dee Bell,
County Official
Cross Index No. G-22 T. 31N R. 29W Mer.