

YARNELL CRIPPLE HORSE

CERTIFIED LAND CORNER RECORDATION

DESCRIPTION OF CORNER EVIDENCE FOUND, AND ORIGINAL RECORD (IF KNOWN)

No Original Record.  
No Evidence Found.

DESCRIPTION OF MONUMENT AND ACCESSORIES ESTABLISHED  
TO PERPETUATE THE ORIGINAL LOCATION OF THIS CORNER:

Date of work: Oct. 1980

SEE REVERSE

SKETCH, WITH COURSE AND DISTANCE TO ADJACENT CORNERS IF DETERMINED IN THIS SURVEY.  
(MAY SKETCH OR PASTE REPRODUCTION ON REVERSE SIDE.)

SEE REVERSE

Surveyor's Seal



I, Kenneth Kern  
certify that the information shown herein is true and correct.

*Kenneth E. Kern*

Signature of Ground Party Chief

I, Melvin D. Lauteren  
certify that I have carefully performed or reviewed the work done on the diagrammed corner as reported on this recordation form and approve the same.

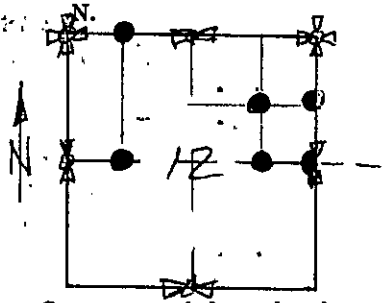
*Melvin D. Lauteren*

Signature of Surveyor

4232-S  
Registration Number

DIAGRAM OF CORNER:

S12, T31N R29W, PMM

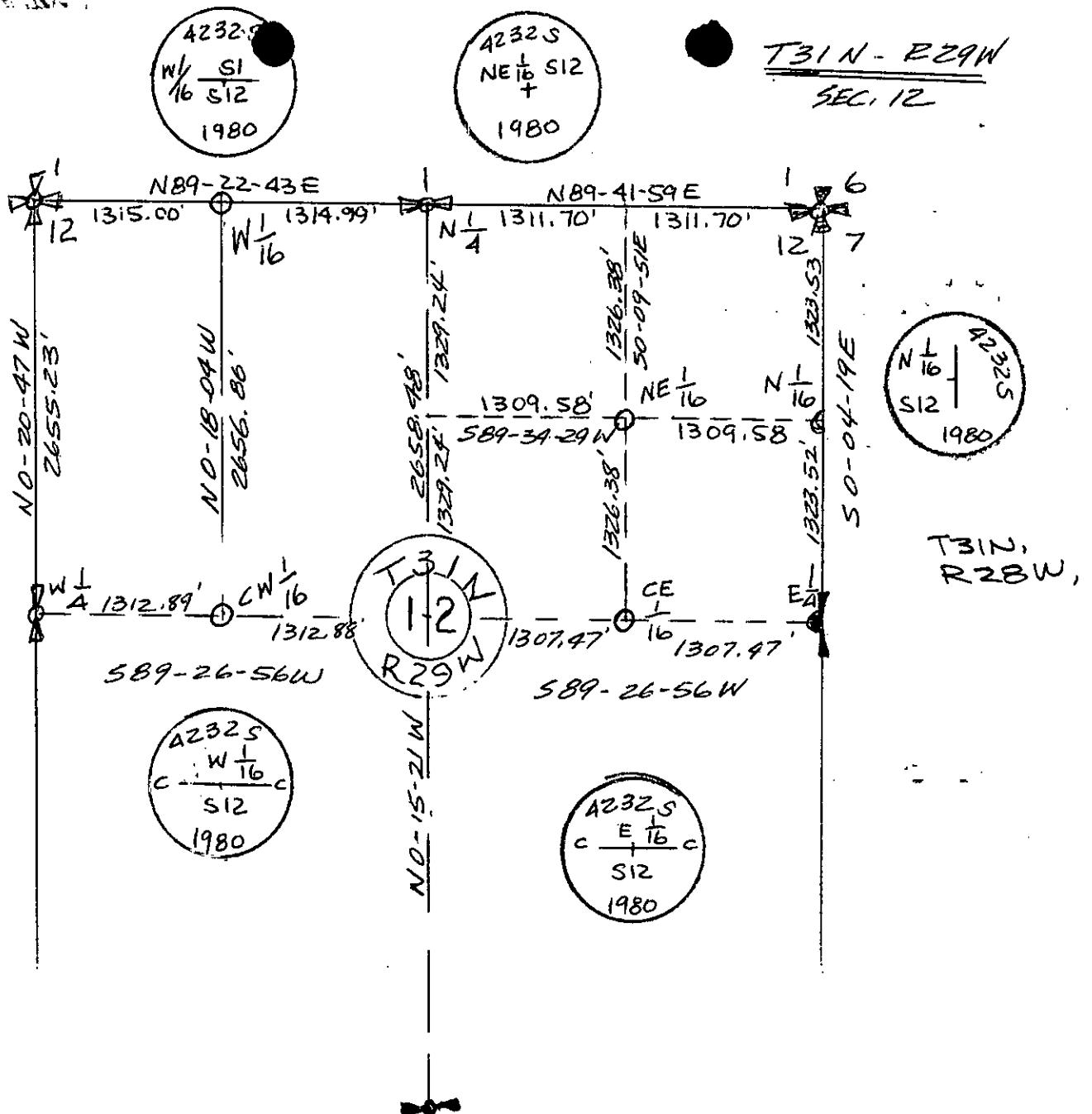


● = Corner recorded on the sheet  
W1/16, S1, S12-CW 1/16,  
S 12, NE 1/16, S12-CE  
1/16, S12, N 1/16, S12,  
T31N, R29W.

Office of Clerk and Recorder, County of Lincoln

This "corner record" was filed for record on the 26<sup>th</sup> day of November 1980, was noted on the cross-index plat and is assigned page No. 930, in book No. 930

Eleanor L. Vaughn, Deputy  
County Official



- W 1/16 Set an aluminum pipe 2 1/2" X 30", 26" in ground, with cap marked as shown above for exact corner position From Which:  
 A Larch 9 ins., dia. bears S37°W, 29.50 Feet distance, Scribed W 1/16 B.T.  
 A Larch, 8 ins., dia., bears S65°E, 26.10 Feet distance, Scribed W 1/16 B.T.
- CW 1/16 Set an aluminum pipe 2 1/2" X 30", 26" in ground, with cap marked as shown above for exact corner position From Which:  
 A Grand Fir, 12 ins. dia., bears N4°00'W, 7.05 Feet Distance, Scribed CW 1/16 B.T.  
 A Grand Fir, 10 Ins. Dia., bears S73°E, 4.15 Ft. Distance, Scribed CW 1/16 B.T.
- NE 1/16 Set an aluminum pipe 2 1/2" X 30", 26" in ground, with cap marked as shown above for exact corner position From Which:  
 A Grand Fir, 10 ins. dia., bears S33°W, 31.40 Ft. Dist., Scribed NE 1/16 B.T.  
 A Douglas Fir, 14 ins. dia., bears S78°E, 42.80 Ft. Dist. Scribed NE 1/16 B.T.
- CE 1/16 Set an aluminum pipe 2 1/2" X 30", 26" in ground, with cap marked as shown above for exact corner position From Which:  
 A Larch, 13 ins. dia., bears S31°30'E, 22.15 Ft. Dist., Scribed CE 1/16 B.T.  
 A Doug Fir, 8 ins. dia., bears N32°30'E, 16.00 Ft. Dist., Scribed CE 1/16 B.T.
- N 1/16 Sec. 12- Set an aluminum pipe 2 1/2" X 30", 26" in ground, with cap marked as shown above for exact corner position From Which:  
 A Douglas Fir, 8 ins. dia., bears N64°W, 26.90 Ft. Dist., Scribed N 1/16 B.T.  
 A Douglas Fir, 14 ins. dia., bears N02°30'W, 37.60 Ft. Dist., Scribed N 1/16 B.T.