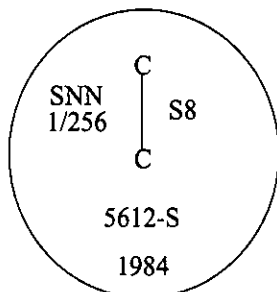


CERTIFIED CORNER RECORDATION

Corner **CSNN 1/256** Sec. **8** T. **31N** R. **29W** P.M., MT **Lincoln** County

I. 1984 Certificate of Survey No. 1362 by Thomas C. Hill No. 5612 S.: At the corner point, set an aluminum rod, 30 ins. long, 3/4 in. diam., 27 ins. in the ground, with a rock collar, with a 3 1/2 in. diam., aluminum cap mkd. as shown:



Established two bearing trees:

- A larch, 11 ins. diam., bears S73°E, 21.6 ft. dist., mkd. "X" "BT".
- A larch, 12 ins. diam., bears S75°W, 20.6 ft. dist., mkd. "CSNN 1/256 S8 BT".

Set a guard post, West, 2.0 ft. dist. from the corner, with a "Survey Marker" decal attached.

II. Found an aluminum pipe, protruding 2 ins. above the ground, firmly set, with a 3 1/4 in. diam. brass cap mkd. as shown above.

from which:

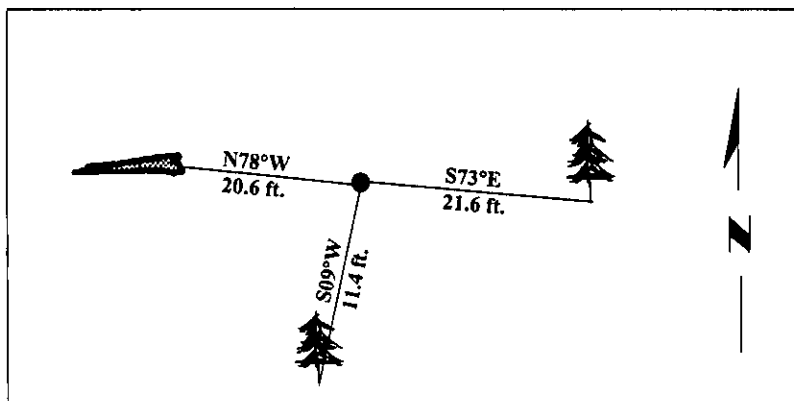
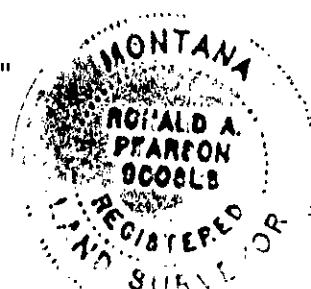
- A larch, 13 ins. diam., bears S73°E, 21.6 ft. dist., mks. with visible scribe. (record)
- A down tree, bears N78°W, 20.6 ft. dist., mkd. with no visible scribe. (record-A larch, S75°W)

III. Established one new bearing tree:

- A larch, 11 ins. diam., bears S09°W, 11.4 ft. dist., mkd. "SNN 1/256 S8 BT".

Painted bearing trees and attached Land Survey Monument and Bearing Tree signs.

Magnetic Declination: 20° East.



SKETCH OF CORNER

CERTIFICATION

I, Rex O. Rice
certify the information shown herein is true and correct.

I, Ronald A. Pearson
certify that this Corner Record correctly represents work performed by me or under my direction in compliance with the "Corner Recordation Act" (70-22-101, et seq., M.C.A.)

Ronald A. Pearson
Signature of Surveyor & Seal

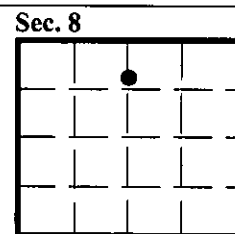
Date: 12/30/96

Reg. No.: 9008LS

Employer: U.S. FOREST SERVICE

Office of Clerk and Recorder, County of LINCOLN. This "corner record" was filed for record on FEB 3, 1997 was noted on the cross-index plat and is assigned page No. 9035, in book No. _____

CORAL M. CUMMINGS
County Official *C. Cummings*



● - corner this sheet