

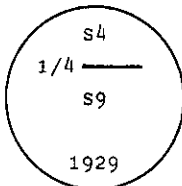
## INSTRUCTIONS

1. Original and/or subsequent record used to evaluate the corner position.
2. Description of evidence found, note discrepancies in the record, state method of establishing lost or obliterated corners.
3. Description of monument and accessories set to perpetuate the corner position.
4. Sketch of corner, show all pertinent data which can best be shown in a sketch example, corner marking, topography ties, position of accessories, etc.
5. Certification must be signed and sealed by Land Surveyor registered in the State of Montana.
6. Fill in Cross Index & Section Diagram at bottom of sheet.

## CERTIFIED CORNER RECORDATION

Corner S 1/4 of S4 T. 31 N. R. 28 W. P.M.M. Lincoln County

- I. 1929 G.L.O. Resurvey record by W. R. Bandy et al: Set an iron post, 3 ft. long, 1 in. in diam., 24 ins. in the ground to solid rock and 12 ins. in a mound of stone, for the 1/4 sec. cor., with brass cap marked



from which

- A pine, 10 ins. in diam., bears  $S41^{\circ}E$ , 11 lks. (7.26 ft.) dist., mkd.  $1/4$  S9 BT.  
A pine, 12 ins. in diam., bears  $N15^{\circ}45'W$ , 59 lks. (38.94 ft.) dist., mkd.  $1/4$  S4 BT.

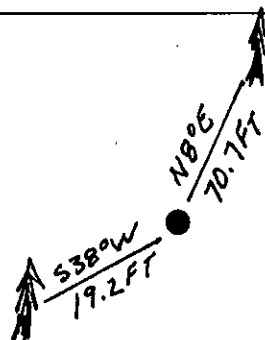
- II. Found a 1 in. diam. iron post, 8 ins. out of the ground, with a  $2\frac{1}{2}$  ins. diam. GLO brass cap mkd. as shown from which:

- A root crown, bears  $S42^{\circ}E$ , 7.0 ft. dist., log portion alongside mkd.  $1/4$  S9 BT.  
A pine snag, 14 ins. diam., bears  $N17^{\circ}W$ , 39.7 ft. dist., mkd.  $1/4$  S4 BT.

- III. Established two new bearing trees

- A larch, 15 ins. diam., bears  $N8^{\circ}E$ , 70.7 ft. dist., mkd.  $1/4$  S9 BT.  
A pine, 16 ins. diam., bears  $S38^{\circ}W$ , 19.2 ft. dist., mkd.  $1/4$  S9 BT.

Painted red bands around the bearing trees and attached Land Survey Monument and Bearing Tree signs.  
Magnetic Declination:  $20^{\circ}$  East



SKETCH OF CORNER

## CERTIFICATION

- I. Steve Boyer  
certify the information shown herein is true and correct.

Steve Boyer  
Signature Ground Party Chief

- I. Alvah F. Hughes  
certify that this Corner Record correctly represents work performed by me or under my direction in compliance with the "Corner Recordation Act" (70-22-101, et seq., M.C.A.)

Alvah F. Hughes  
Signature of Surveyor Seal 322 L.S.

Date: 1/8/91 Reg. No. 7322

Employer: U.S. FOREST SERVICE

Office of Clerk and Recorder, County of Lincoln. This "corner record" was filed for record on 4-21-92 was noted on the cross-index plat and is assigned page No. 5039, in book No. Coral M. Corbett

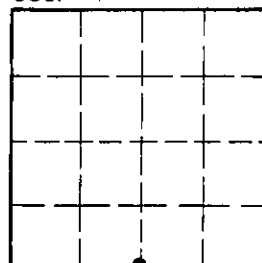
County Official [Signature]

E-11

31 N 28 W

Cross Index No. \_\_\_\_\_ T. \_\_\_\_\_ R. \_\_\_\_\_ PMM

Sec. 4



• - corner this sheet