

INSTRUCTIONS

1. Original and/or subsequent record used to evaluate the corner position.
2. Description of evidence found, note discrepancies in the record, state method of establishing lost or obliterated corners.
3. Description of monument and accessories set to perpetuate the corner position.
4. Sketch of corner, show all pertinent data which can best be shown in a sketch example, corner marking, topography ties, position of accessories, etc.
5. Certification must be signed and sealed by Land Surveyor registered in the State of Montana.
6. Fill in Cross Index & Section Diagram at bottom of sheet.

CERTIFIED CORNER RECORDATION

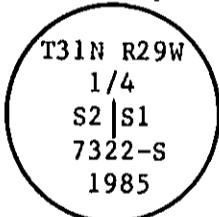
Corner 1/4 Cor. of Secs. 1 and 2 T. 31N R. 29W P.M.M. Lincoln County

- I. 1898 GLO RECORDATION: Set a slate stone, 16 x 14 x 6 ins., 11 ins. in the ground, for 1/4 sec. cor., mkd. 1/4 on W. face, from which:
 A tamarack, 28 ins. diam., bears S.79°10'W., 69 lks. dist., mkd. 1/4 S2 BT.
 A tamarack, 7 ins. diam., bears N.82°40'E., 42 lks. dist., mkd. 1/4 S1 BT.

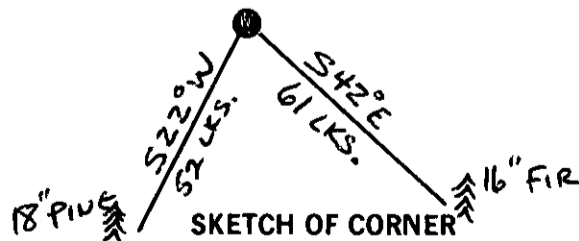
1966 I. M. Tillotson Remonumentation: At the 1/4 corner common to Secs. 1 and 2, T31N R29W, P.M.M. Lincoln County, Montana, we find: A rock 16 x 14 x 7 ins. set in other rocks with one face showing, upon which is carved 1/4; this rock is upon the edge of steep side slope over a wide gulch through which runs the Cripple Horse Creek Road; from which:
 8 in. dead tamarack snag, bears N.82°E., 42 lks. dist.
 No trace of second BT, but Cripple Horse Road has been constructed through its location.
 Established the following new references:
 A 10 in. Douglas Fir, bears S.42°E., 61 lks. dist.
 A 12 in. Ponderosa Pine, bears S.22°W., 52 lks. dist.
 Both double blazed and scribed RM.

- II. No evidence of stone found on ground. The stone falls in the cut slope of a road. Found the following references:
 A fir, 16 ins. diam., bears S.42°E., 61 lks. dist., mkd. with an overgrown blaze.
 A pine, 18 ins. diam., bears S.22°W., 52 lks. dist., mkd. with an overgrown blaze.

- III. At the intersection of the distances of I. M. Tillotson bearing trees, set an aluminum rod, 3/4 in. diam., 30 ins. long, 28 in. the ground, with a 3 1/4 in. diam. aluminum cap mkd. as shown:



Painted red bands around each bearing tree and attached "Land Survey Monument" and "Bearing Tree" signs.

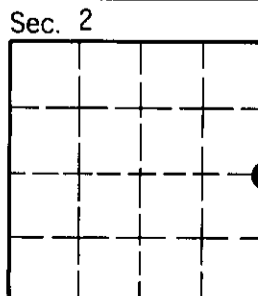


CERTIFICATION

I. Gary Crismon
 certify the information shown herein is true and correct.
Gary Crismon
 Signature Ground Party Chief
 I. Alvah F. Hughes
 certify that this Corner Record correctly represents work performed by me or under my direction in compliance with the Corner Recordation Act" (70-22-101, et seq., M.C.A.)
Alvah F. Hughes
 Signature of Surveyor & Seal
 Date: 10-85 Reg. No. 7322-S
 Employer: U.S.F.S.

Office of Clerk and Recorder, County of Lincoln. This "corner record" was filed for record on Dec 5, 1985 was noted on the cross-index plat and is assigned page No. 3181, in book No. _____

Janet BF Sigel by Bill Buckhoff
 County Official



Cross Index No. C-21 T. 31N R. 29W P.M.M.

• - corner this sheet