

10 | 11
Corner SEC COR 13 | 14 T. 31 N. R. 29 W. P.M.M. LINCOLN County

- I. 1898 Subdivision and Meander lines of fractional T31N, R29W by Paul S. A. Rickel: Set a slate stone, 18x12x10 ins., 12 ins. in the ground for cor. of secs. 10, 11, 14 & 15 and 4 bearing trees.

1972 BLM Remonumentation by Joseph E. French: The cor. of secs. 10, 11, 14 & 15, monumented with a slate stone, 18x12x10 ins., set 12 ins. in the ground, mkd. 4 notches on the S. and 2 notches on the E. edges, from which the remains of the original bearing trees:

- A pine stump, 30 ins. diam., bears N54°E, 85 lks. dist., mkd. BT.
- A pine stump, 24 ins. diam., bears S63 1/4°E, 57 lks. dist., mkd. T31N R29W S14 BT.
- A burned pine stump, 24 ins. diam., bears S67 1/4°W, 64 lks. dist., mkd. BT.
- A pine stump, 18 ins. diam., bears N43°10'W, 60 lks. dist., mkd. R29W BT.

At the corner point:

Set an iron post, 30 ins. long, 2 1/2 ins. diam., 24 ins. in the ground, with brass cap mkd. (shown below). From which the new bearing trees:

- A fir, 8 ins. diam., bears N42 1/2°E, 20 lks. dist., mkd. T31N R29W S11 BT.
- A fir, 6 ins. diam., bears S47°E, 16 lks. dist., mkd. T31N R29W S14 BT.
- A fir, 8 ins. diam., bears N40 1/4°W, 54 lks. dist., mkd. T31N R29W S10 BT.

and a bearing object

A granite outcrop, 8x5x4 ft. above ground, bears S36°W, 26 lks. dist., mkd. XBO with 2 in. letters, 1 ft. below top edge and on the center of the N. face.

bury the original stone alongside and raise a flat mound of stone, 3 ft. diam., around the iron post

- II. Found: A 2 1/2 in diam. iron pipe, firmly set in a collar of stone, with 3 1/4 in. diam. BLM brass cap, 6 ins. above ground, mkd. as shown below, from which the BLM bearing trees and bearing object:

- A Douglas Fir, 11 ins. diam., bears N42 1/2°E, 13.2 ft. dist., mkd. with a healed face.
- A Douglas fir, 9 ins. diam., bears S47°E, 10.5 ft. dist., mkd. with a healed face.
- A Douglas fir, 10 ins. diam., bears N40 1/4°W, 36.2 ft. dist., mkd. a healed face. (Rec: 35.6 ft.)
- A granite outcrop, 8x5x4 ft. above ground, bears S36°W, 16.9 ft. dist., mkd. XBO with 2 in. letters, 1 ft. below top edge and on the center of the N. face.

the original bearing trees:

- A pine stump, 21 ins. diam., bears N54°E, 56.1 ft. dist., no visible marks.
- A pine stump, 21 ins. diam., bears S63 1/4°E, 37.6 ft. dist., no visible marks.
- A pine stump, 18 ins. diam., bears N43°10'W, 39.6 ft. dist., mkd. R29W BT.

- III. Painted the scribed faces red and 6 in. wide red bands around the bearing trees. Attached Land Survey Monument and Bearing Tree signs. Painted the XBO red on the rock outcrop. Set 6 ft. steel posts 3 ft. South & East, with "Land Survey Monument" and Property Boundary" decals attached.

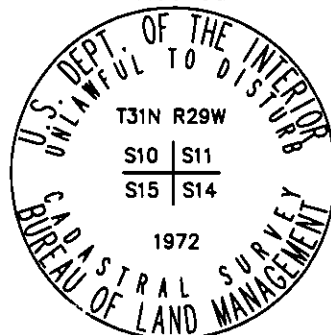
LAT 48°27'26"N
LONG 115°16'46"W
NAD 83
REC. GRADE GPS

Date of Fieldwork: 6/28/2012

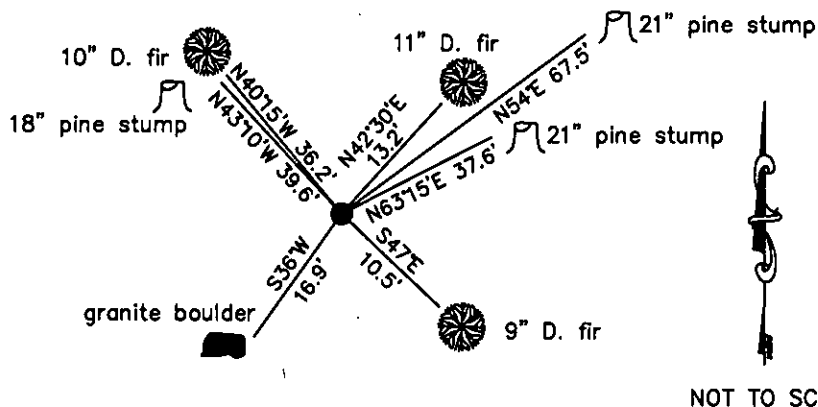
Survey crew: Tom Hommel, Alex Bluhm

Magnetic declination: 20° East assumed

Equipment used: Hand compass and loggers tape



U.S. Forest Service, Supervisors Office, 31374 Hwy. 2, Libby, MT 59923 (406) 293-6211



NOT TO SCALE

CERTIFICATION

I, _____, certify the information shown herein is true and correct.

Signature of Land Party Chief

Thomas M. Hommel, Licensed Surveyor
I certify that this Corner Record correctly represents work performed by me or under my direct supervision with the Corner Recordation Act (70-22-101, et seq., M.C.A.)

Signature of Surveyor & Geod

Date: 11/24/12 Reg. No. 10880LS

Employer: U. S. Forest Service

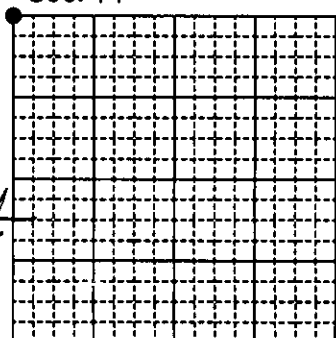
Office of Clerk and Recorder, County of Lincoln

Sec. 14

242092 BOOK: CCR CC&R'S PAGE: 11994 Pages: 1
STATE OF MONTANA LINCOLN COUNTY
RECORDED: 11/27/2012 2:30 KOI: CC&R'S
TAMMY D. LAUER CLERK AND RECORDER
FEE: \$0.00 BY: *Debbie Lauer*
FOR: US FOREST SERVICE 31374 HWY 2, LIBBY, MONTANA 59923,

Cross Index No. J-17 T. 31N. R. 29W. P.M., MT

Adopted July 1, 1981, Montana Board of Professional Engineers & Land Surveyors



● corner this sheet