

Corner SEC COR 23 24 26 25 T. 31 N. R. 29 W. P.M.M. LINCOLN County

- I. 1903 Subdivision lines of fractional T31N, R29W by George A. Fessenden & Ranney Y. Lyman: Set a slate stone, 16x9x6 ins., 11 ins. in the ground for cor. of secs. 23, 24, 25 & 26 and 4 bearing trees.

1972 BLM Remonumentation by Joseph E. French: The cor. of secs. 23, 24, 25 & 26, monumented with a slate stone, 16x9x6 ins., set 11 ins. in the ground, mkd. 2 notches on the S. and 1 notch on the E. edges, from which the remains of the original bearing trees:

- A fir, 15 ins. diam., bears N50 1/2°E, 10 lks. dist., mkd. with an overgrown blaze.
A larch, 7 ins. diam., bears S19°E, 70 lks. dist., mkd. with an overgrown blaze. (Record: A Fir)
A fir stump, 18 ins. diam., bears S54°W, 35 lks. dist., mkd. T.
A fir snag, 14 ins. diam., bears N71°W, 38 lks. dist., mkd. with an overgrown blaze.

At the corner point:

Set an iron post, 30 ins. long, 2 1/2 ins. diam., 24 ins. in the ground, with brass cap mkd. (shown below). From which new bearing tree:

- A fir, 11 ins. diam., bears S44 1/2°W, 53 lks. dist., mkd. T31N R29W S26 BT.

and a bearing object:

- A rock outcrop, 25x19x7 ft. above ground, bears N32 1/2°W, 23 lks. dist., mkd. XBO with 2 in. letters, 2 ft. below top of outcrop on the SE face.

bury the original stone alongside and raise a flat mound of stone, 3 1/2 ft. base, around the iron post

- II. Found: A 2 1/2 in diam. iron pipe, firmly set in a mound of stone, with 3 1/4 in. diam. BLM brass cap, 3 ins. above ground, mkd. as shown below, from which:

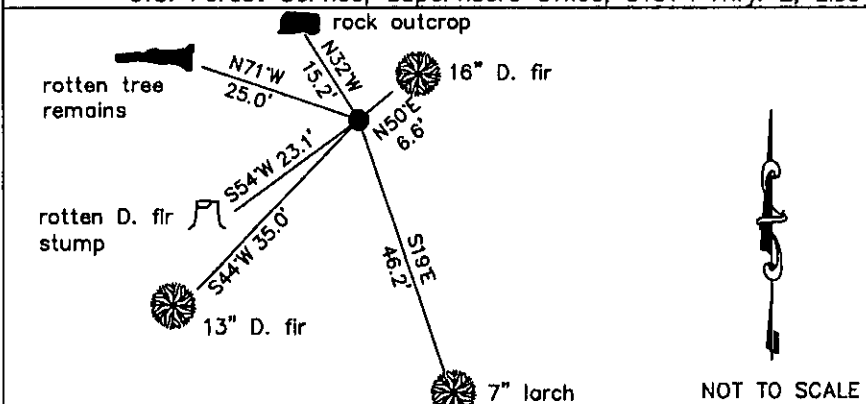
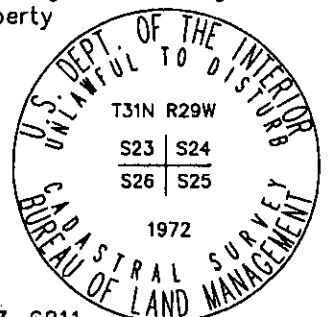
- A Douglas fir, 16 ins. diam., bears N50°E, 6.6 ft. dist., mkd. with a healed face.
A larch, 7 ins. diam., bears S19°E, 46.2 ft. dist., mkd. with a healed face.
A Douglas fir, 13 ins. diam., bears S44°W, 35.0 ft. dist., mkd. with a healed face.
A rotten stump, bears S54°W, 23.1 ft. dist., no visible marks.
A root hole and rotten tree remains, bears N71°W, 25.0 ft. dist., no visible marks.
A rock outcrop, 25x19x7 ft. above ground, bears N32°W, 15.2 ft. dist., mkd. XBO.

- III. Painted the scribed faces red and 6 in. wide red bands around the bearing trees and painted the XBO on the rock outcrop red. Attached Land Survey Monument and Bearing Tree signs to bearing trees. Set a 6 ft. steel post 3 ft. North, with "Land Survey Monument" and Property Boundary" decals attached.

LAT 48°25'41.22873"N
LONG 115°15'28.39552"W
NAD 83

Date of Fieldwork: 5/3/2011
Survey crew: Tom Hommel
Magnetic declination: 20° East assumed
Equipment used: Hand compass and loggers tape

U.S. Forest Service, Supervisors Office, 31374 Hwy. 2, Libby, MT 59923 (406) 293-6211



CERTIFICATION

I, Thomas M. Hommel, 10800LS
certify the information shown herein is true and correct.

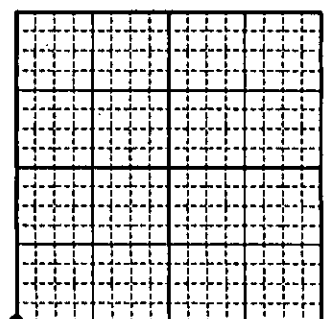
Marc Burkhardt, 9520LS
certify that this Corner Record correctly represents work performed by me or under my direction in compliance with the "Corner Recordation Act" (16 U.S.C. 1111-1114, M.C.A.)

Date: 3/16/2012
Employer: U.S. Forest Service

Office of Clerk and Recorder, County of Lincoln

Sec. 24

237816 BOOK: CCR CC&R'S PAGE: 11966 Pages: 1
STATE OF MONTANA LINCOLN COUNTY
RECORDED: 03/20/2012 8:43 PM: CC&R'S
TAMMY D. LAUER CLERK AND RECORDER
FEE: \$0.00 BY: Debbie Durrin
TO: US FOREST SERVICE 31374 HWY 2, LIBBY, MONTANA 59923,



Cross Index No. R 21 T. 31N. R. 29W. P.M., MT
Adopted July 1, 1981, Montana Board of Professional Engineers & Land Surveyors

● corner this sheet