

Corner 1/4 23|24 T. 31 N. R. 29 W. P.M.M. LINCOLN County

- I. 1903 Subdivision lines of fractional T31N, R29W by George A. Fessenden & Ranney Y. Lyman: A slate stone, 15x12x5 ins., 10 ins. above ground for 1/4 sec. cor, mkd. 1/4 on W. face, from which:

A pine, 44 ins. diam, bears S77°30'W, 138 lks. dist., mkd. 1/4 S23 BT.

A tamarack, 32 ins. diam, bears N57°30'E, 145 lks. dist., mkd. 1/4 S24 BT.

1972 Corner Card by A. R. Trenkle: No evidence found. Believed to have been destroyed by logging.

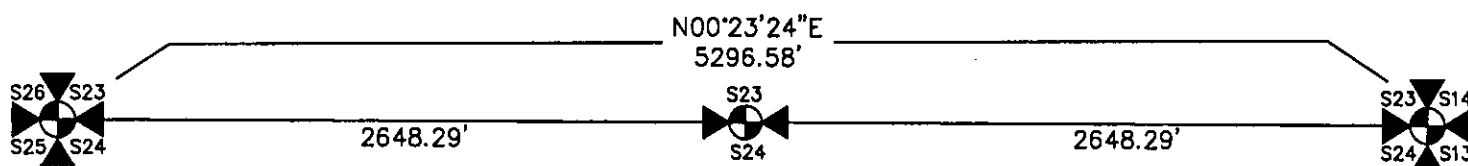
- II. After a careful search no evidence of the original monument or bearing trees was found. The position for the 1/4 sec. cor. for sections 23 and 24 falls in what appears to be an old skid road and is believed to be destroyed. The area had been previously logged and there is evidence of past forest fires.

- III. At the position determined by single proportion measurement between the NW and SW section corners of section 24, set a 2 1/2 in. diam. by 30 ins. long aluminum pipe, 24 ins. in the ground in a collar of stone, with a 3 1/4 in. diam. aluminum cap marked as shown below, from which the new bearing trees:

A fir, 11 ins. diam, bears N32°E, 13.1 ft. dist., mkd. 1/4 S24 BT.

A fir, 10 ins. diam, bears N32°W, 29.3 ft. dist., mkd. 1/4 S23 BT.

Painted red the scribed faces and 6 in. red bands around the bearing trees. Attached Land Survey Monument and Bearing Tree signs to bearing trees. Set a 6 ft. steel post 3 ft. North and South, with "Land Survey Monument" and Property Boundary" decals attached.

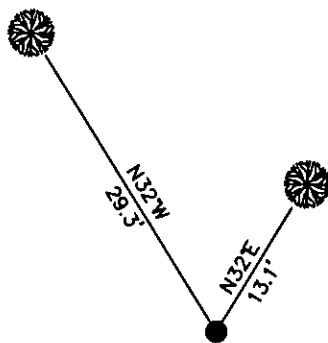
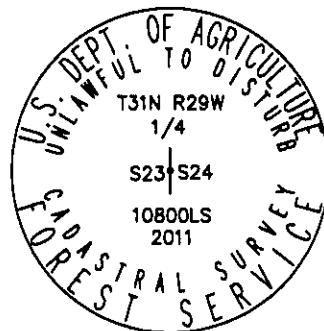


NOT TO SCALE

LAT 48°26'07.35684"N
LONG 115°15'28.12732"W
NAD 83

Date of Fieldwork: 6/27/2011
Survey crew: Tom Hommel
Magnetic declination: 20' East assumed
Equipment used: Hand compass and loggers tape

U.S. Forest Service, Supervisors Office, 31374 Hwy. 2, Libby, MT 59923 (406) 293-6211



NOT TO SCALE

CERTIFICATION

I, _____, certify the information shown herein is true and correct.

Signature Ground Party _____

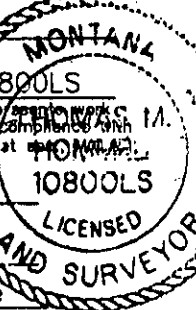
Thomas M. Hommel, 10800LS

I, _____, certify that this Corner Record correctly represents the work performed by me or under my direction in compliance with the "Corner Recordation Act" (70-225-101, et seq., MCA).

Signature of Surveyor & SLS _____

Date: 12/12/2011 Reg. No. 10800LS

Employer: U. S. Forest Service

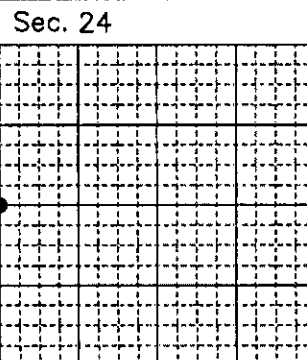


Office of Clerk and Recorder, County of Lincoln

236950 BOOK: CCR CC&R'S PAGE: 11940 Pages: 1
STATE OF MONTANA LINCOLN COUNTY
RECORDED: 01/23/2012 2:00 KOI: CC&R'S
TAMMY D. LAUER CLERK AND RECORDER
FEE: \$0.00 BY: Robin A. Benson, Deputy
TO: FILED

Cross Index No. P 21 T. 31N. R. 29W. P.M., MT

Adopted July 1, 1981, Montana Board of Professional Engineers & Land Surveyors



● corner this sheet