

CERTIFIED CORNER RECORDATION

Corner NW Sec S7 T. 31 N. R. 29 W. P.M.M. LINCOLN County

I. Record: 1939 GLO resurvey of the west boundary T. 31 N. R. 29 W. by Randy Lyman:
Set an iron post, 3 ft. long, 2 ins., diam., 28 ins. in the ground, for the cor. of secs. 6 and 7 only with brass cap from which:

A tamarack 18 ins. diam., bears N. 24°5'E., 61 lks.(40.26 ft.) dist., marked T31N R29W S6 BT.

A pine 6 ins. diam., bears S. 77°01'E., 31 lks.(20.46 ft.) dist., marked T31N R29W S7 BT.

II. Found: 2 1/2 in. diam. GLO brass cap on a 2 in. diam. iron pipe firmly set, marked as shown below from which:

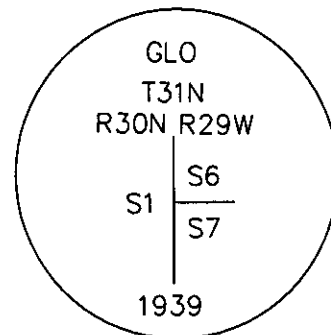
A pine snag 14 ins. diam. fallen over, bears S.77°E., 20.46 ft. dist., with visible scribing.

III. Perpetuation: We establish 2 new bearing trees:

A Douglas fir 8 1/2 ins. diam., bears N. 88°E., 41.30 ft. dist., marked T31N R29W S6 BT.

A Douglas fir 7 ins. diam., bears S. 51°E., 18.10 ft. dist., marked T31N R29W S7 BT.

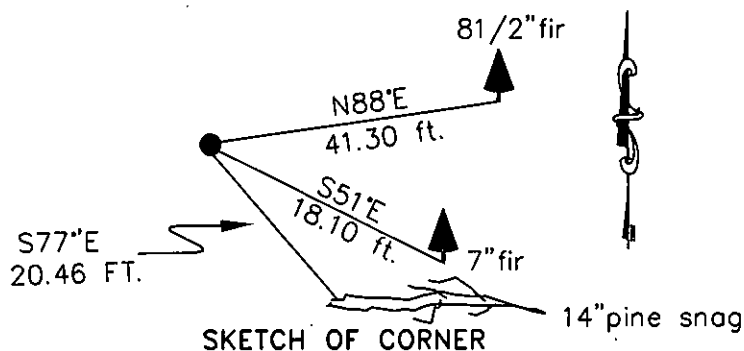
Painted faces and 6 in. wide red bands to all bearing trees and attached Land Survey Monument and Bearing Tree signs.



Magnetic declination: 18° East assumed

Equipment used: Hand compass and loggers tape

Kootenai Surveyors Inc., 314 California Av., Libby, MT. 59923 (406) 293-4354



SKETCH OF CORNER

CERTIFICATION

I, Mike Tester
certify the information shown herein is true and correct.

Signature of Ground Party Chief

I, Alvah F. Hughes
certify that this Corner Record correctly represents work performed by me or under my direction in compliance with the "Corner Recordation Act" (70-22-101, et seq., M.C.A.)

Signature of Surveyor & Seal

Date: 04/17/2006 Reg. No. 7322-LS

Employer: Kootenai Surveyors Inc.

Office of Clerk and Recorder, County of Lincoln This "corner

record" was filed for rec 193382 BOOK: CCR CC&R'S PAGE: 10928 Pages: 1

was noted on the cross- STATE OF MONTANA LINCOLN COUNTY

book No. RECORDED: 04/18/2006 9:10 KOI: CC&R'S

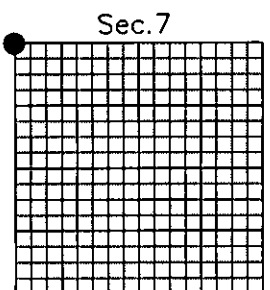
CORAL M. CUMMINGS CLERK AND RECORDER

FEE: \$0.00 BY: [Signature]

TO: KOOTENAI SURVEYORS INC P.O. BOX 393, LIBBY, MT 59923

Cross Index No. E 01 T. 31N. R. 29W. P.M., MT

Adopted July 1, 1981, Montana Board of Professional Engineers & Land Surveyors



• corner this sheet