

# CERTIFIED CORNER RECORDATION

Corner N 1/4 S7 T. 31 N. R. 29 W. P.M.M. LINCOLN County

I. Record: 1903 GLO survey by George A. Fessenden: Set a sandstone 20x14x4 ins., 15 ins. in a mound of stone marked 1/4 on N. face; from which:

- A tamarack, 10 ins. diam., bears N.29°W., 20 lks.(13.20 ft.) dist., marked 1/4 S 6 BT.
- A tamarack, 8 ins. diam., bears S.9°W., 40 lks.(26.40 ft.) dist., marked 1/4 S 7 BT.

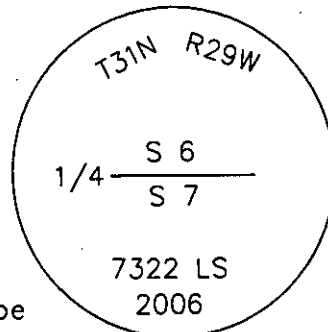
II. Found: Found mound of stone on a ledge rock but could not find original scribed GLO stone from which:

- A tamarack snag, 18 ins. diam. fallen over, bears S.9°W., 26.40 ft. dist. with visible scribing.
- A tamarack stump, 20 ins. diam. bears N.29°W., 13.20 ft. dist. with no visible scribing or face.

III. Perpetuation: At the corner point, determined from original bearing trees: set a 3 1/4 in. diam. Aluminum rock cap in described rock ledge marked as shown below from which:

- A Douglas fir, 12 ins. diam., bears N.68°E., 12.90 ft. dist., scribed 1/4 S6 BT.
- A Douglas fir, 11 ins. diam., bears S.6°E., 12.70 ft. dist., scribed 1/4 S7 BT.

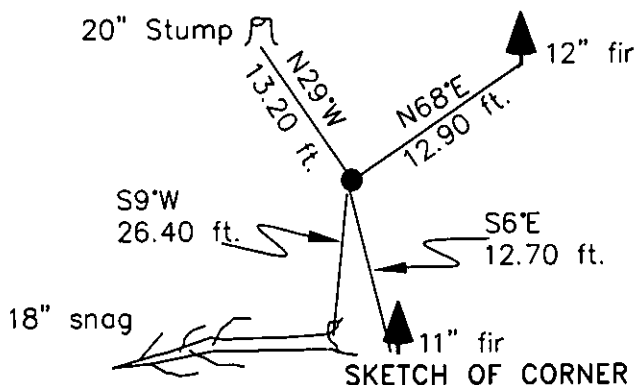
Pointed faces and 6 in. wide red bands to all bearing trees and attached Land Survey Monument and Bearing Tree signs.



Magnetic declination: 18° East assumed

Equipment used: Hand compass and loggers tape

Kootenai Surveyors Inc., 314 California Av., Libby, MT. 59923 (406) 293-4354



## CERTIFICATION

I, Levi Powell  
certify the information shown herein is true and correct.

Levi Powell  
Signature Ground Party Chief

I, Alvah F. Hughes  
certify that this Corner Record correctly represents work performed by me or under my direction in compliance with the "Corner Recordation Act" (70-22-101, et seq., M.C.A.)

Alvah F. Hughes  
Signature of Surveyor & Seal

Date: 04/17/2006 Reg. No. 7322-LS

Employer: Kootenai Surveyors Inc.

Office of Clerk and Recorder, County of Lincoln This "corner

record" was filed for record r 193381 BOOK: CCR CC&R'S PAGE: 10927 Pages: 1

was noted on the cross-index STATE OF MONTANA LINCOLN COUNTY

book No. RECORDED: 04/18/2006 9:05 KOI: CC&R'S

CORAL M. CUMMINGS CLERK AND RECORDER

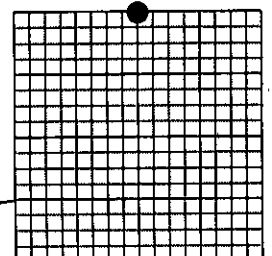
FEE: \$0.00 BY: [Signature]

TO: KOOTENAI SURVEYORS INC. P.O. BOX 393, LIBBY, MT 59923

Cross Index No. E 03 T. 31N. R. 29W. P.M., MT

Adopted July 1, 1981, Montana Board of Professional Engineers & Land Surveyors

Sec7



• corner this sheet