

CERTIFIED CORNER RECORDATION

CORNER C-E 1/16 S 14 T. 31 N., R. 29 W., P.M.M. LINCOLN COUNTY

RECORD:
NONE

FOUND EVIDENCE:
NONE

PERPETUATION:

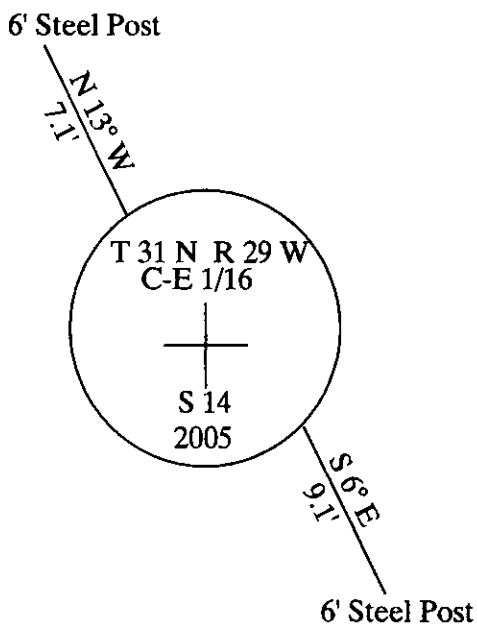
Set a 3 1/4 inch aluminum cap stamped (see diagram below) on a 5/8 inch dia. rebar 30 inches long.
From which

A 6 foot steel fence post in S 14 bears N 13° W 7.8 feet.

A 6 foot steel fence post in S 14 bears S 6° E 9.1 feet.

Attached bearing tree signs to all posts.

MAGNETIC DECLINATION: 18° E



CERTIFICATION

I, GEORGE CLARK

Certify the information shown herein is true and correct

Signature of Ground Party Chief

I, KENNETH E. DAVIS

I certify that this Corner Record correctly represents work performed in accordance with my direction in compliance with the

"Corner Recordation"

(7-22-01 et seq. M.S.A.)

KENNETH E. DAVIS

Signature of Surveyor & Seal

Dated 07/13/2005 Reg. No. 4975-S

Employed by Surveying, Inc.

SKETCH OF CORNER

Office of Clerk and Recorder, County of _____

This "corner record" was filed for record on

was noted on 185937 BOOK: CCR CC&R'S PAGE: 10807 Pages: 1

No. _____ STATE OF MONTANA LINCOLN COUNTY

In book No. _____ RECORDED: 07/13/2005 9:07 KOI: CC&R'S

CORAL M. CUMMINGS CLERK AND RECORDER

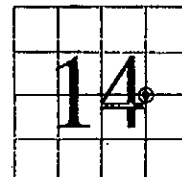
FEE: \$0.00

BY: Jeannie Deane

TO: FILED

Cross Index No. C-E 1/16 S 14 T. 31 N., R. 29 W., P.M.M.

SECTION



THIS CORNER